

Harris Central Appraisal District



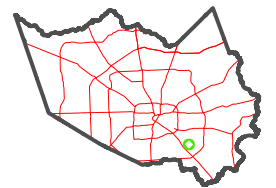
0 45 90 180 Feet

PUBLICATION DATE: 1/9/2023

Geospatial or map data maintained by the Harris Central Appraisal District is for informational purposes and may not have been prepared for or be suitable for legal, engineering, or surveying purposes. It does not represent an on-the-ground survey and only represents the approximate location of property boundaries.



MAP LOCATION

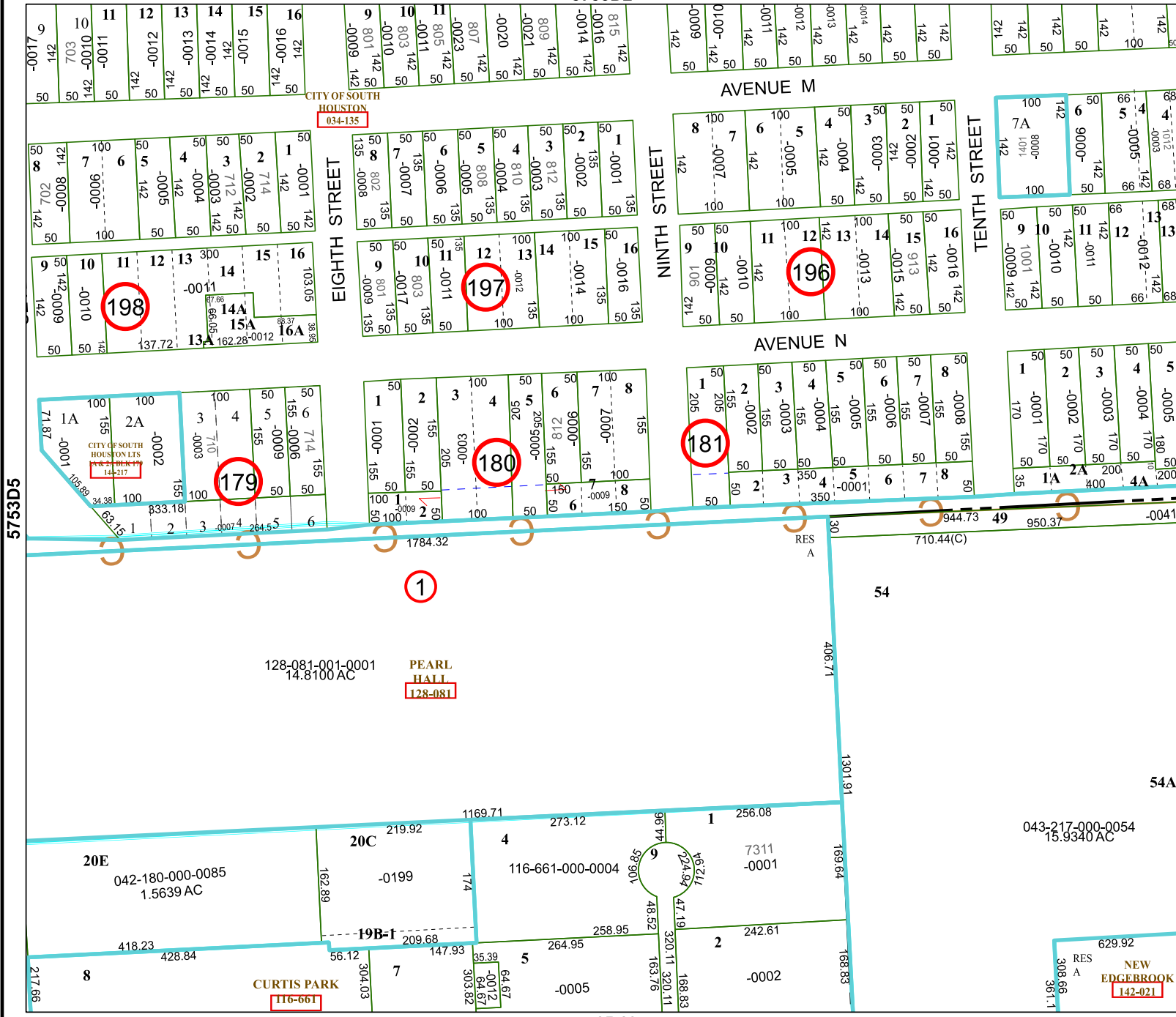


FACET 5753D6

4	1	2	3	4
8	5	6	7	8
12	9	10	11	12

5753D2

5753D10



CITY OF SOUTH HOUSTON 034-135

CITY OF SOUTH HOUSTON LIS 14-217

PEARL HALL 128-081

CURTIS PARK 116-661

NEW EDGEBROOK 142-021

5753D5

5753D7

128-081-001-0001
14.8100 AC

042-180-000-0085
1.5639 AC

043-217-000-0054
15.9340 AC

54A

RES A 308.66
629.92
361.1

RES A

54

54A

RES A 308.66
629.92
361.1

RES A

54

54A

RES A 308.66
629.92
361.1