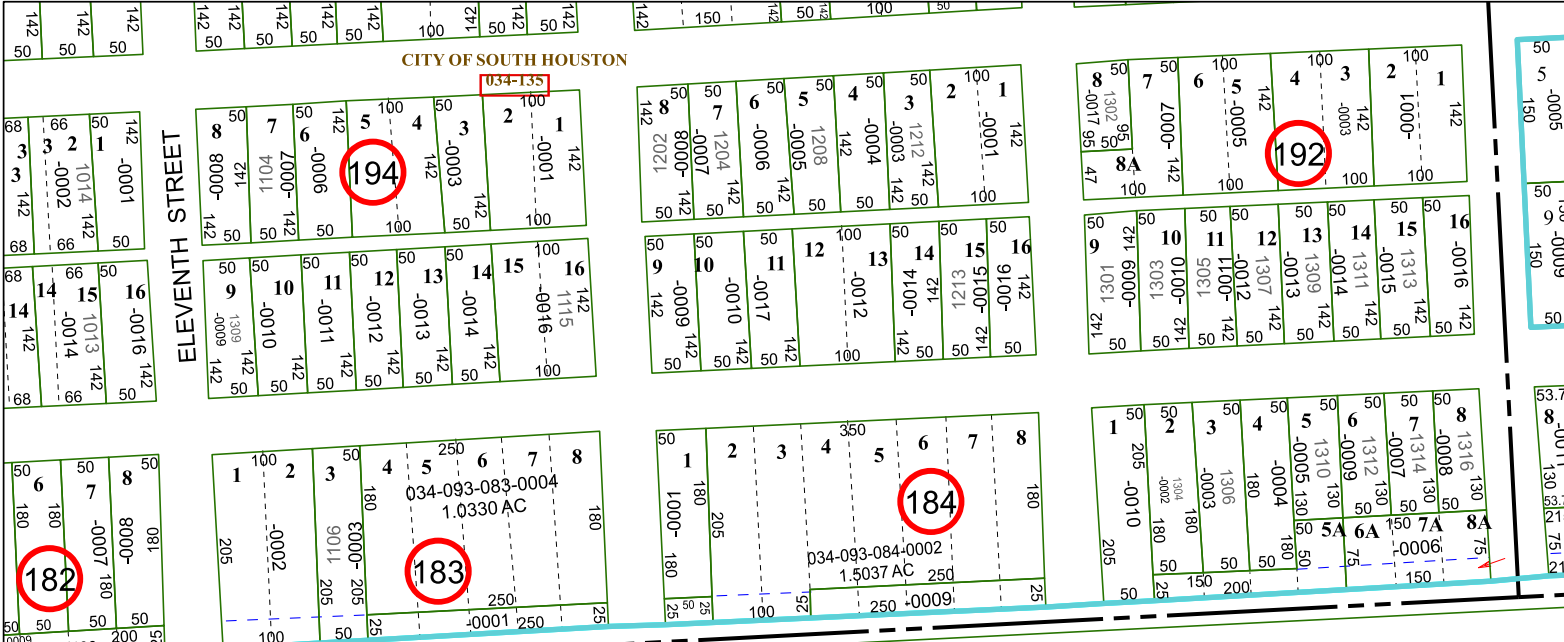
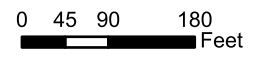


5753D3

CITY OF SOUTH HOUSTON



Harris Central Appraisal District

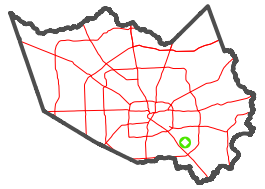


PUBLICATION DATE:
1/9/2023

Geospatial or map data maintained by the Harris Central Appraisal District is for informational purposes and may not have been prepared for or be suitable for legal, engineering, or surveying purposes. It does not represent an on-the-ground survey and only represents the approximate location of property boundaries.



MAP LOCATION



FACET 5753D7

1	2	3	4	1
5	6	7	8	5
9	10	11	12	9

5753D11

5753D6

5753D5

NEW EDGEBROOK

142-021

PRIVATE ROAD

PEARL HALL DRIVE

54B

54C
043-217-000-0054
15.9340 AC

RES A

51B
155-0057

51A

170.12

150.0(C)

81.64

950.37

944.73

180

115

182.41(C)

66.58

92.68(C)

7

170.0(C)

629.92

60.05

271.82

242.31

216.4

211.48

2610

381.31

-0053

123.17

70

70

7

8

123.17