

Harris Central Appraisal District



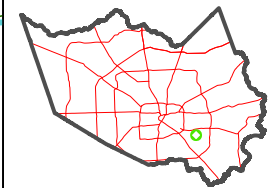
0 45 90 180 Feet

PUBLICATION DATE: 2/28/2024

Geospatial or map data maintained by the Harris Central Appraisal District is for informational purposes and may not have been prepared for or be suitable for legal, engineering, or surveying purposes. It does not represent an on-the-ground survey and only represents the approximate location of property boundaries.



MAP LOCATION



FACET 5754B7

1	2	3	4	1
5	6	7	8	5
9	10	11	12	9

5754B3

BIRD ROAD

66	65	64	63	62	61	60	59	58
140	140	140	140	140	140	140	140	140
-0066	-0065	-0064	-0063	-0062	-0061	-0060	-0059	-0058
141	123	121	111	111	111	111	111	141
140	140	140	140	140	140	140	140	140
93	94	95	96	97	98	99	100	101
140	140	140	140	140	140	140	140	140
6300-	4600-	6900-	9600-	6600-	8600-	10010-	1010-	1010-
140	140	140	140	140	140	140	140	140
60	60	60	60	60	60	60	60	60

PASADENA HIGHLANDS 070-059

131	130	129	128	127	126	125	124	123
60	60	60	60	60	60	60	60	60
-0131	-0129	-0128	-0127	-0126	-0125	-0124	-0123	-0122
135	133	131	129	127	125	123	121	216
280	248.8	241.9	241.9	216.9	287.5	248.6	276	276
60	60	60	60	60	60	60	60	60
211	212	213	214	215	216	217	218	219
60	60	60	60	60	60	60	60	60
-0212	-0212	-0212	-0212	-0212	-0212	-0212	-0212	-0212
140	140	140	140	140	140	140	140	140
60	60	60	60	60	60	60	60	60

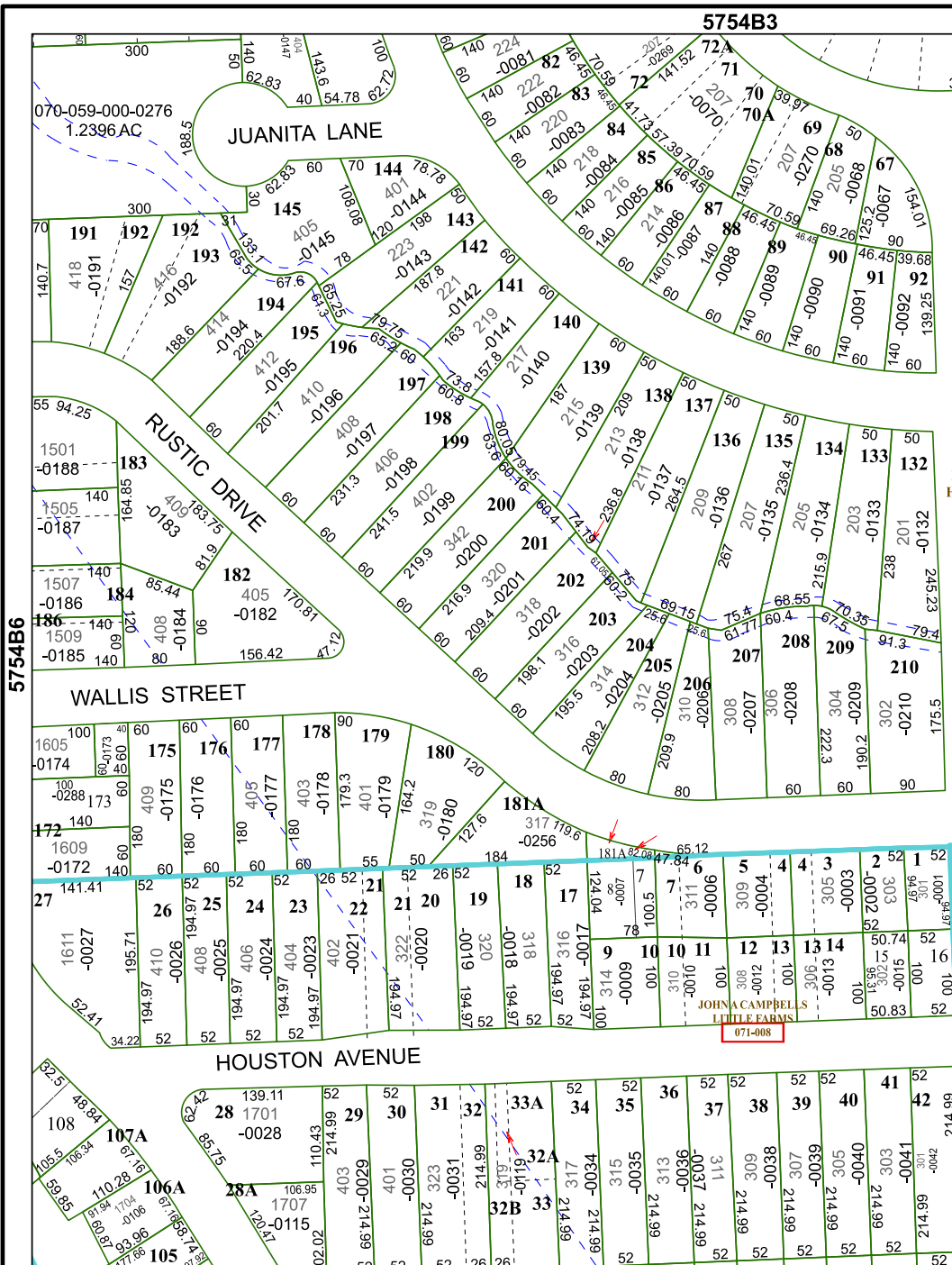
5754B11

JOHN CAMPBELL'S LITTLE FARMS 071-008

20	17	16	15	14	13	12	11
52.19	52.19	52.19	52.19	52.19	52.19	52.19	52.19
-0000	-0000	-0000	-0000	-0000	-0000	-0000	-0000
91	97	100	100	100	100	100	100
194.97	194.97	194.97	194.97	194.97	194.97	194.97	194.97
2	3	4	5	6	7	8	9
52.19	52.19	52.19	52.19	52.19	52.19	52.19	52.19
-0000	-0000	-0000	-0000	-0000	-0000	-0000	-0000
1709	1709	1709	1709	1709	1709	1709	1709
194.97	194.97	194.97	194.97	194.97	194.97	194.97	194.97

LITTLE FARMS 071-007

1	2	3	4	5	6	7	8	9
52.19	52.19	52.19	52.19	52.19	52.19	52.19	52.19	52.19
-0000	-0000	-0000	-0000	-0000	-0000	-0000	-0000	-0000
1709	1709	1709	1709	1709	1709	1709	1709	1709
194.97	194.97	194.97	194.97	194.97	194.97	194.97	194.97	194.97
30A	30	29	28	27	26	25	24	23
114.99	66.712	66.712	66.712	66.712	66.712	66.712	66.712	66.712
52.19	52.19	52.19	52.19	52.19	52.19	52.19	52.19	52.19
-0000	-0000	-0000	-0000	-0000	-0000	-0000	-0000	-0000
1709	1709	1709	1709	1709	1709	1709	1709	1709
194.97	194.97	194.97	194.97	194.97	194.97	194.97	194.97	194.97



5754B6

5754B8