

# Harris Central Appraisal District

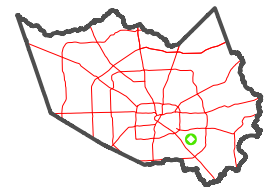


0 45 90 180 Feet

PUBLICATION DATE: 1/9/2023

Geospatial or map data maintained by the Harris Central Appraisal District is for informational purposes and may not be suitable for legal, engineering, or surveying purposes. It does not represent an on-the-ground survey and only represents the approximate location of property boundaries.

MAP LOCATION

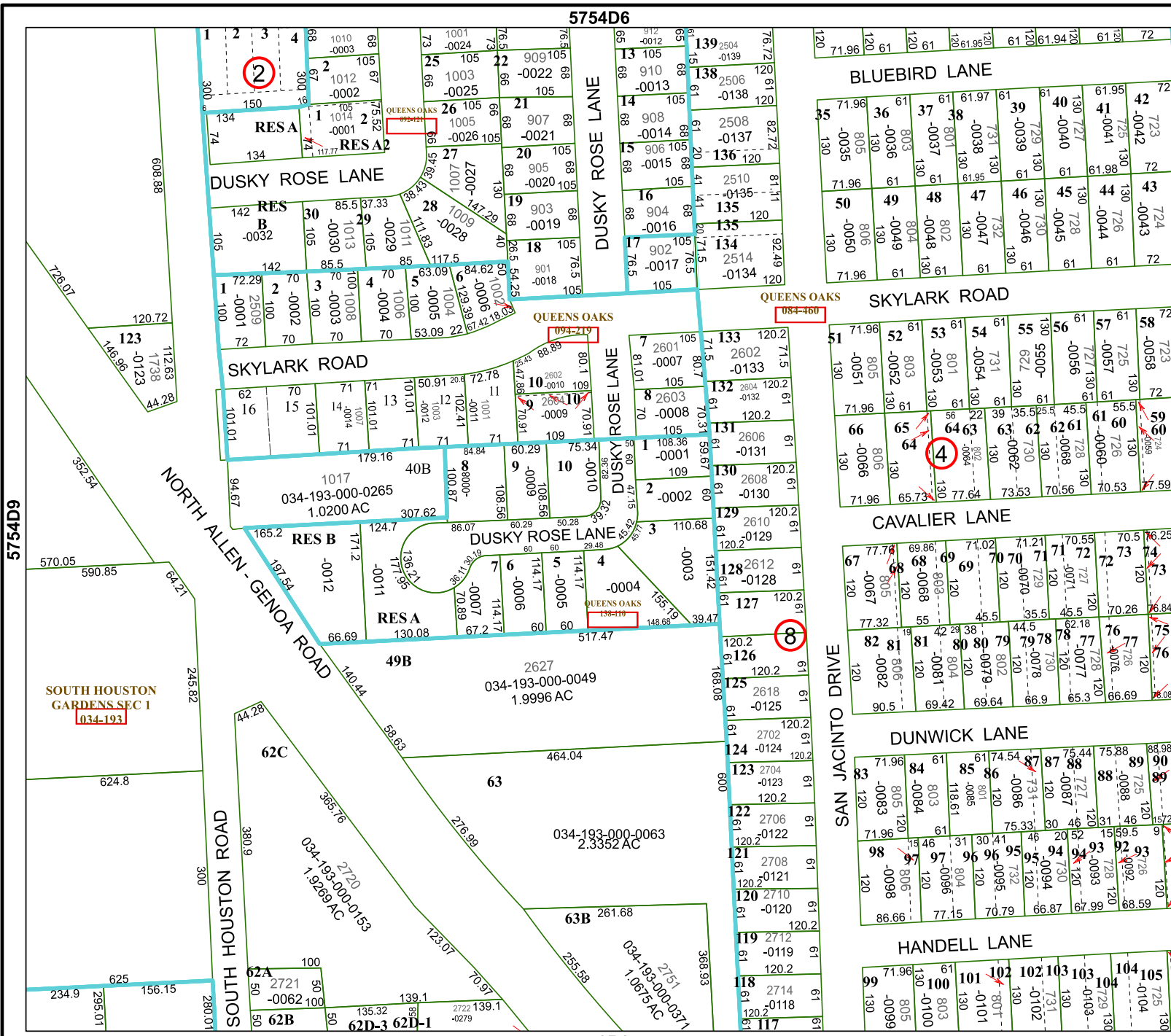


## FACET 5754D10

8	5	6	7	8
12	9	10	11	12
4	1	2	3	4

5754D6

5753B2



5754D9

5754D5