

# Harris Central Appraisal District

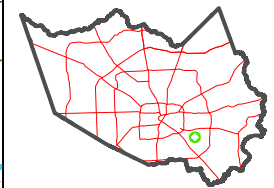


0 45 90 180 Feet

PUBLICATION DATE: 12/30/2023

Geospatial or map data maintained by the Harris Central Appraisal District is for informational purposes and may not be suitable for legal, engineering, or surveying purposes. It does not represent an on-the-ground survey and only represents the approximate location of property boundaries.

MAP LOCATION

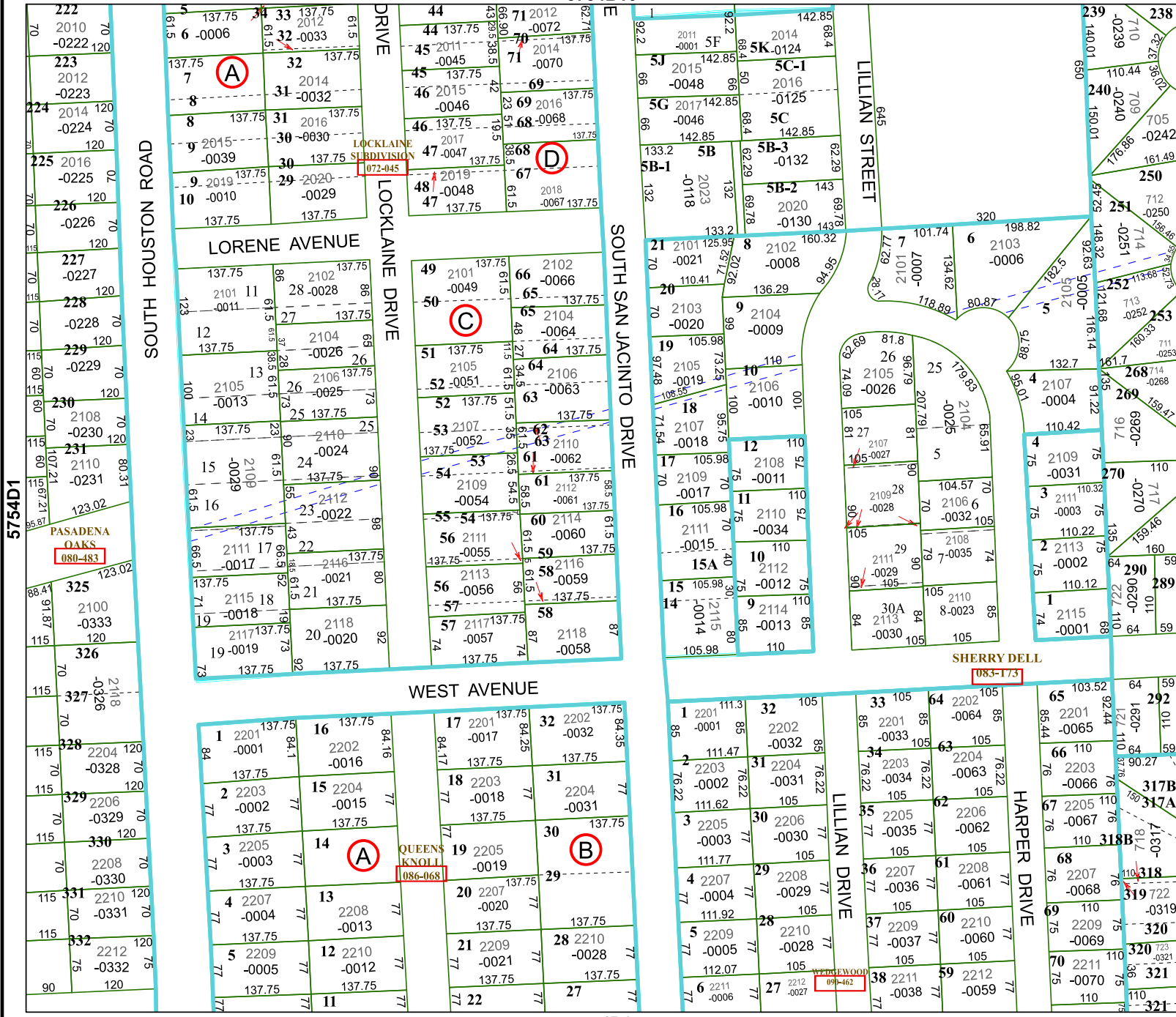


## FACET 5754D2

12	9	10	11	12
4	1	2	3	4
8	5	6	7	8

5754B10

5754D6



5754D1

5754D3

