

# Harris Central Appraisal District



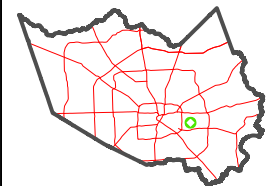
0 45 90 180 Feet

PUBLICATION DATE:  
1/9/2023

Geospatial or map data maintained by the Harris Central Appraisal District is for informational purposes and may not have been prepared for or be suitable for legal, engineering, or surveying purposes. It does not represent an on-the-ground survey and only represents the approximate location of property boundaries.



## MAP LOCATION



# FACET

## 5756A8

2	3	4	1	2
6	7	8	5	6
10	11	12	9	10

5756A4

32H-1A

32B

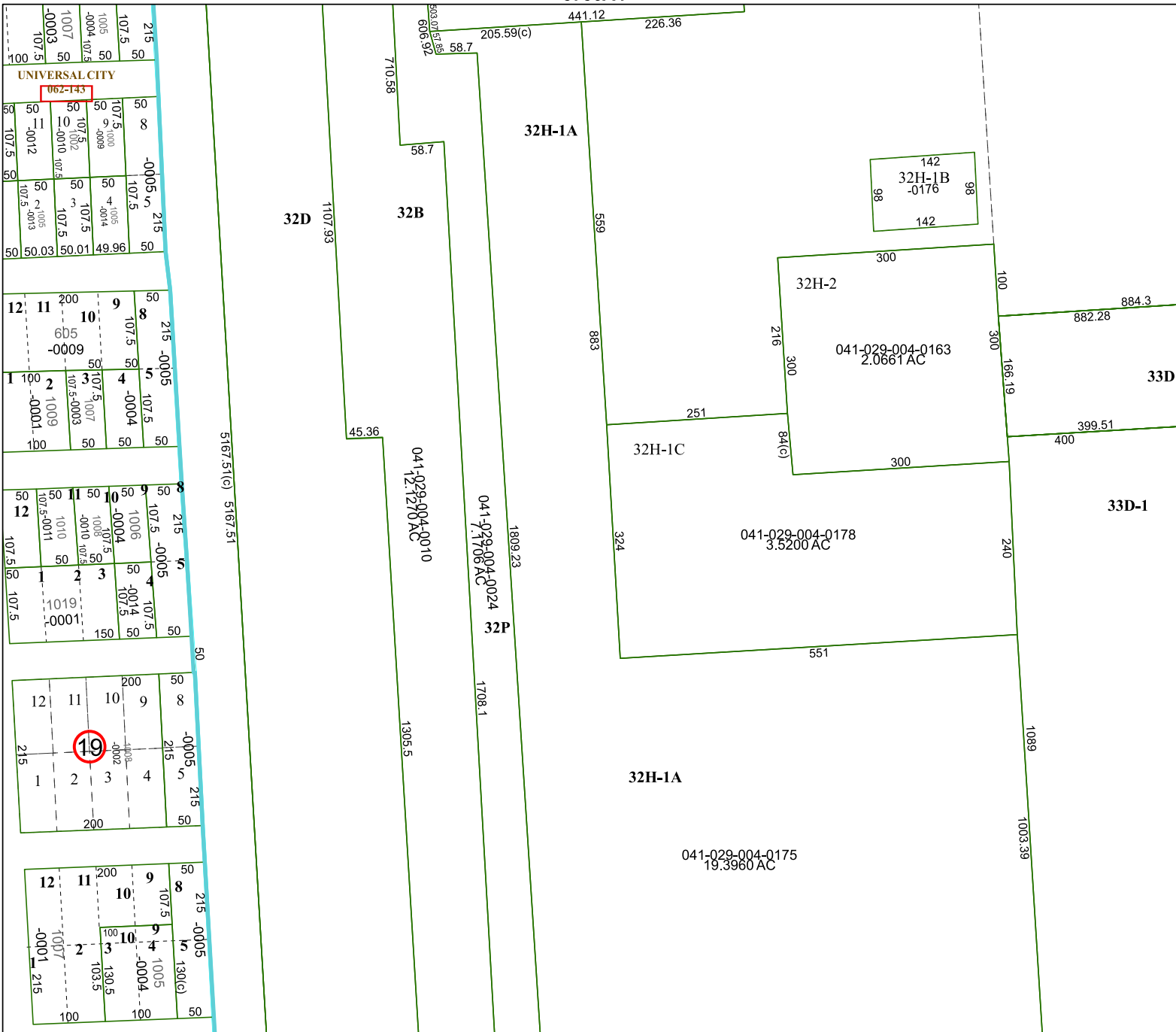
32D

33D

33D-1

32H-1A

5756A12



UNIVERSAL CITY

062-143

7A9575

19

10

10

10