

5756D7

Harris Central Appraisal District



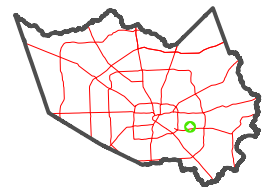
0 45 90 180 Feet

PUBLICATION DATE: 12/30/2023

Geospatial or map data maintained by the Harris Central Appraisal District is for informational purposes and may not have been prepared for or be suitable for legal, engineering, or surveying purposes. It does not represent an on-the-ground survey and only represents the approximate location of property boundaries.



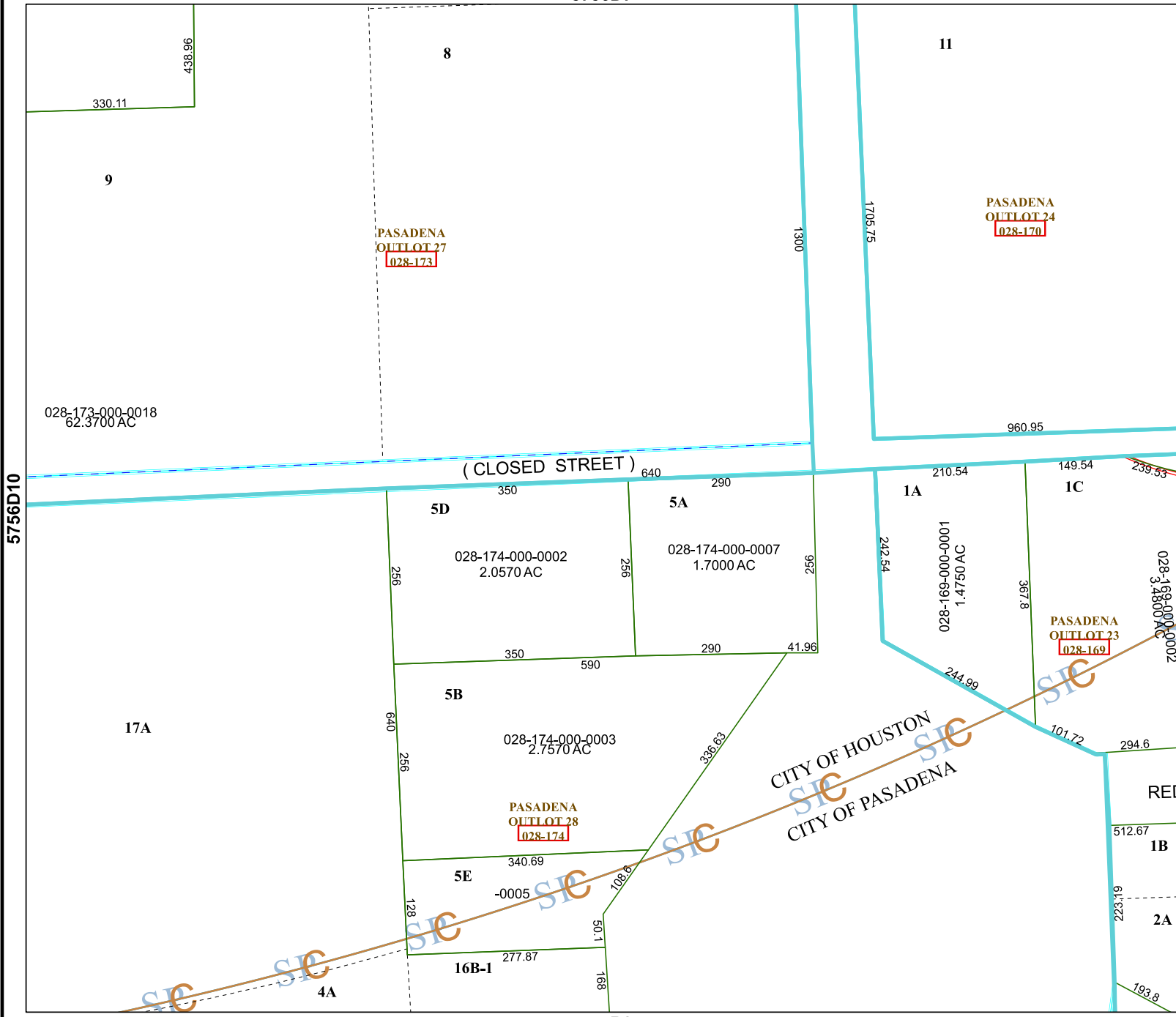
MAP LOCATION



FACET 5756D11

5	6	7	8	5
9	10	11	12	9
1	2	3	4	1

5756D10



5755B3

CITY OF HOUSTON
CITY OF PASADENA