

# Harris Central Appraisal District

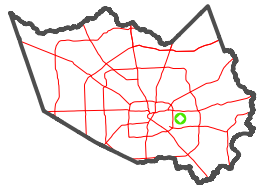


0 45 90 180 Feet

PUBLICATION DATE: 4/24/2023

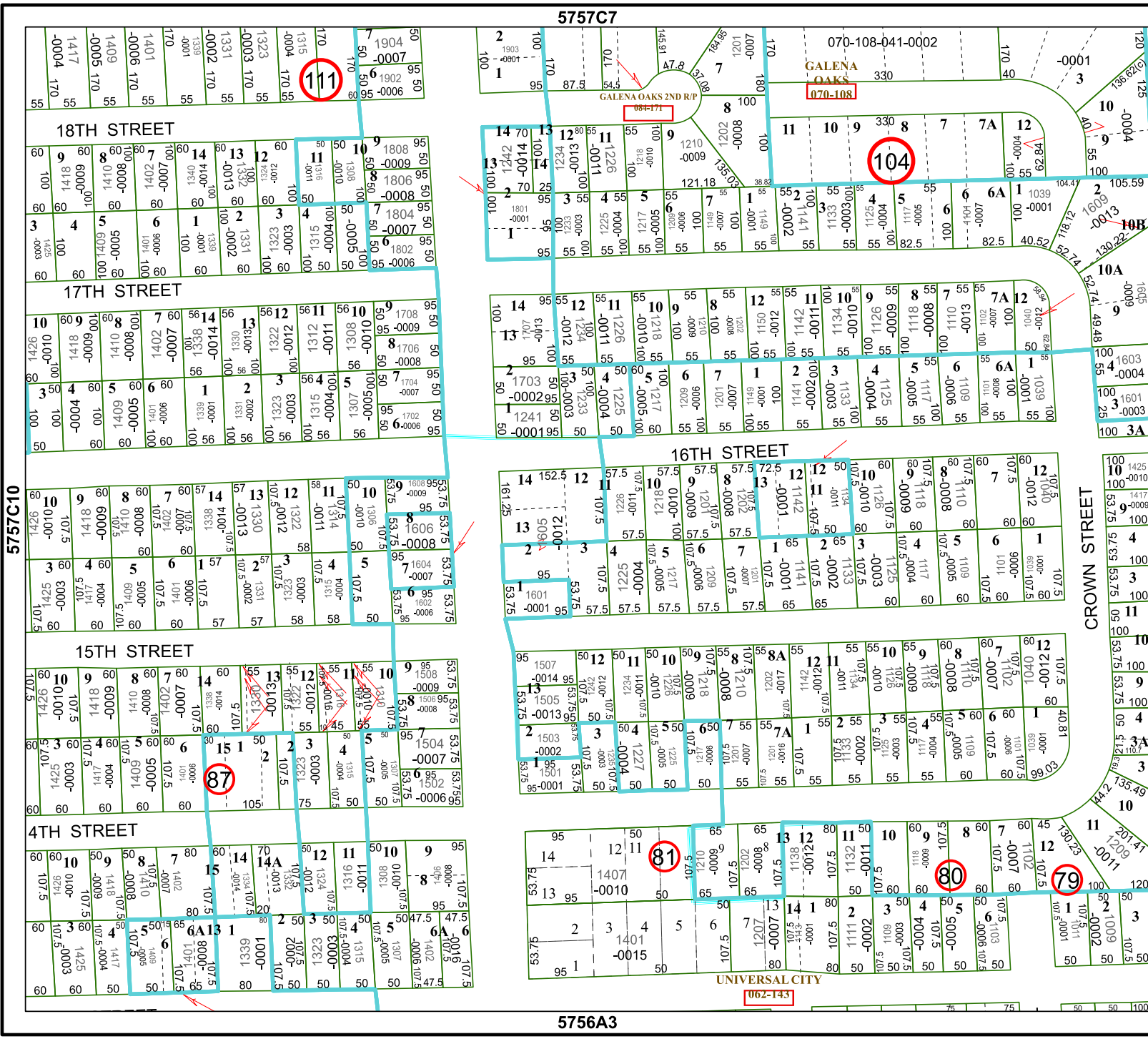
Geospatial or map data maintained by the Harris Central Appraisal District is for informational purposes and may not have been prepared for or be suitable for legal, engineering, or surveying purposes. It does not represent an on-the-ground survey and only represents the approximate location of property boundaries.

MAP LOCATION



## FACET 5757C11

5	6	7	8	5
9	10	11	12	9
1	2	3	4	1



5756A3

5757C10

5757C7

5757C12

