

5757C8

041-029-004-0025  
31.8255 AC

5756A4

# Harris Central Appraisal District



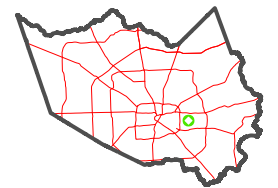
0 45 90 180  
Feet

PUBLICATION DATE:  
1/9/2023

Geospatial or map data maintained by the Harris Central Appraisal District is for informational purposes and may **not** have been prepared for or be suitable for legal, engineering, or surveying purposes. It does **not** represent an on-the-ground survey and only represents the approximate location of property boundaries.

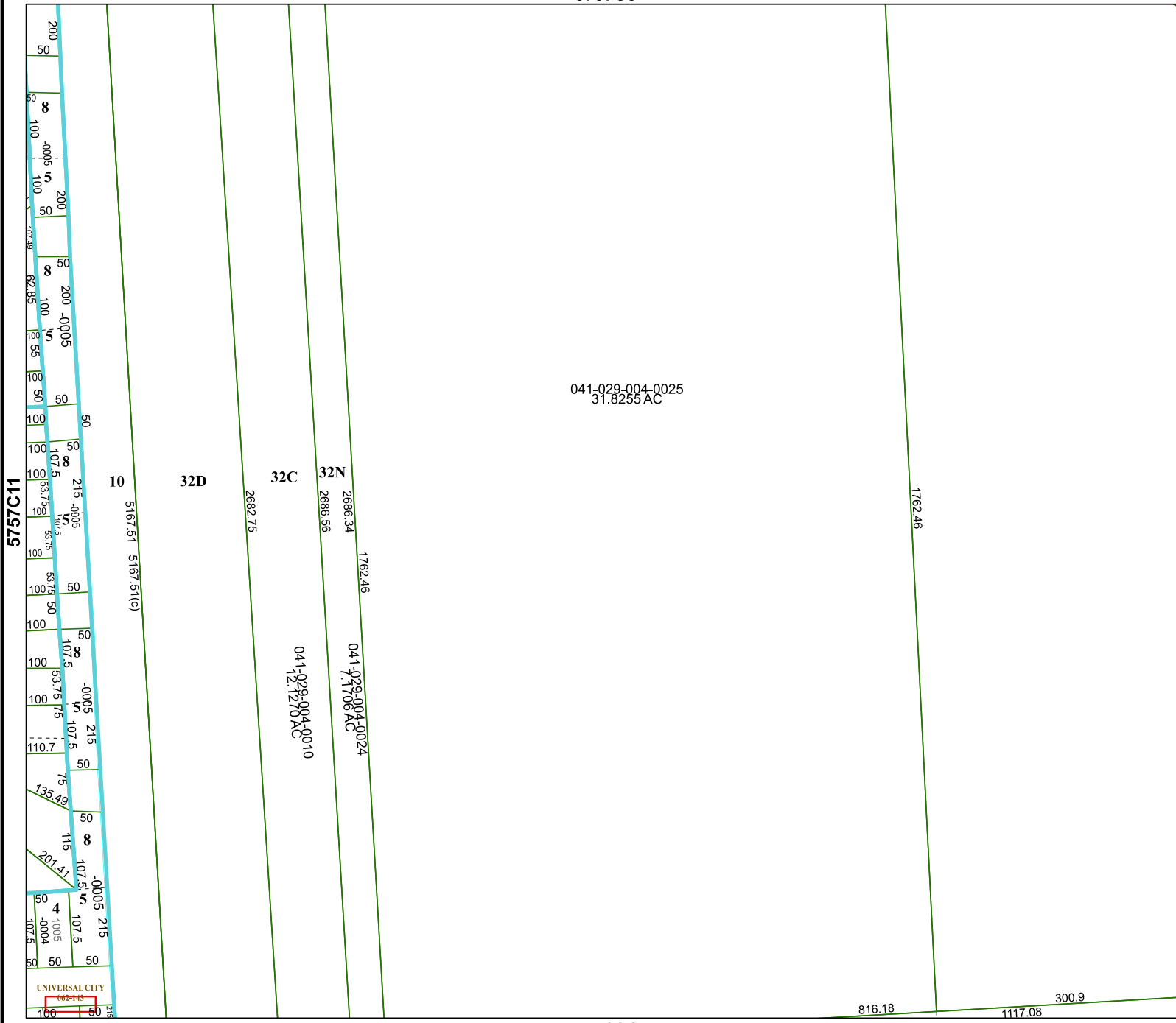


## MAP LOCATION



# FACET 5757C12

6	7	8	5	6
10	11	12	9	10
2	3	4	1	2



5757D9

816.18 1117.08 300.9