

5757C4

38

38A

# Harris Central Appraisal District



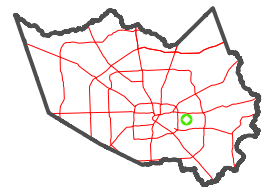
0 45 90 180 Feet

PUBLICATION DATE:  
4/22/2024

Geospatial or map data maintained by the Harris Central Appraisal District is for informational purposes and may not have been prepared for or be suitable for legal, engineering, or surveying purposes. It does not represent an on-the-ground survey and only represents the approximate location of property boundaries.



## MAP LOCATION

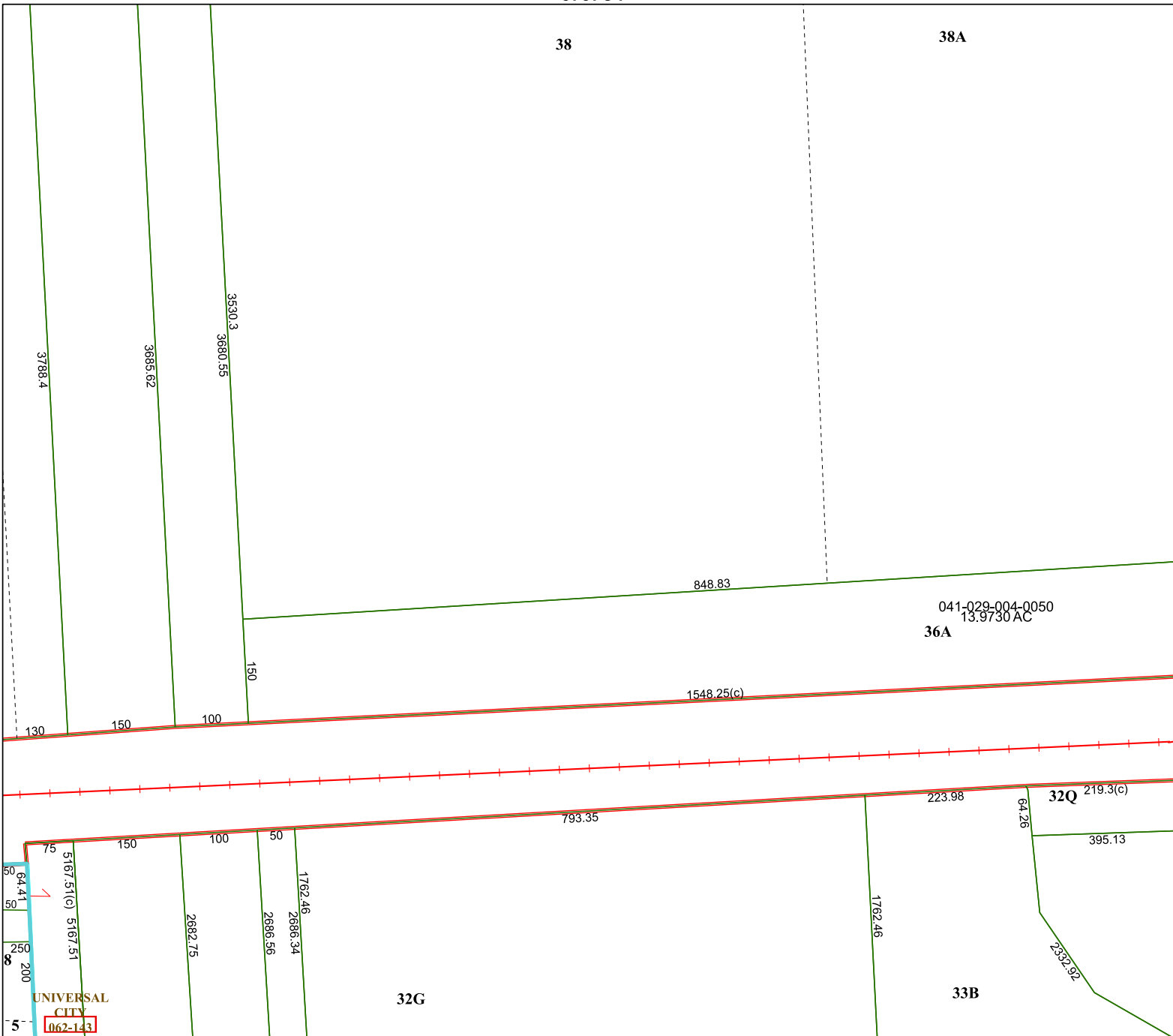


# FACET 5757C8

2	3	4	1	2
6	7	8	5	6
10	11	12	9	10

5757C7

5757D5



5757C12

UNIVERSAL CITY  
062-143