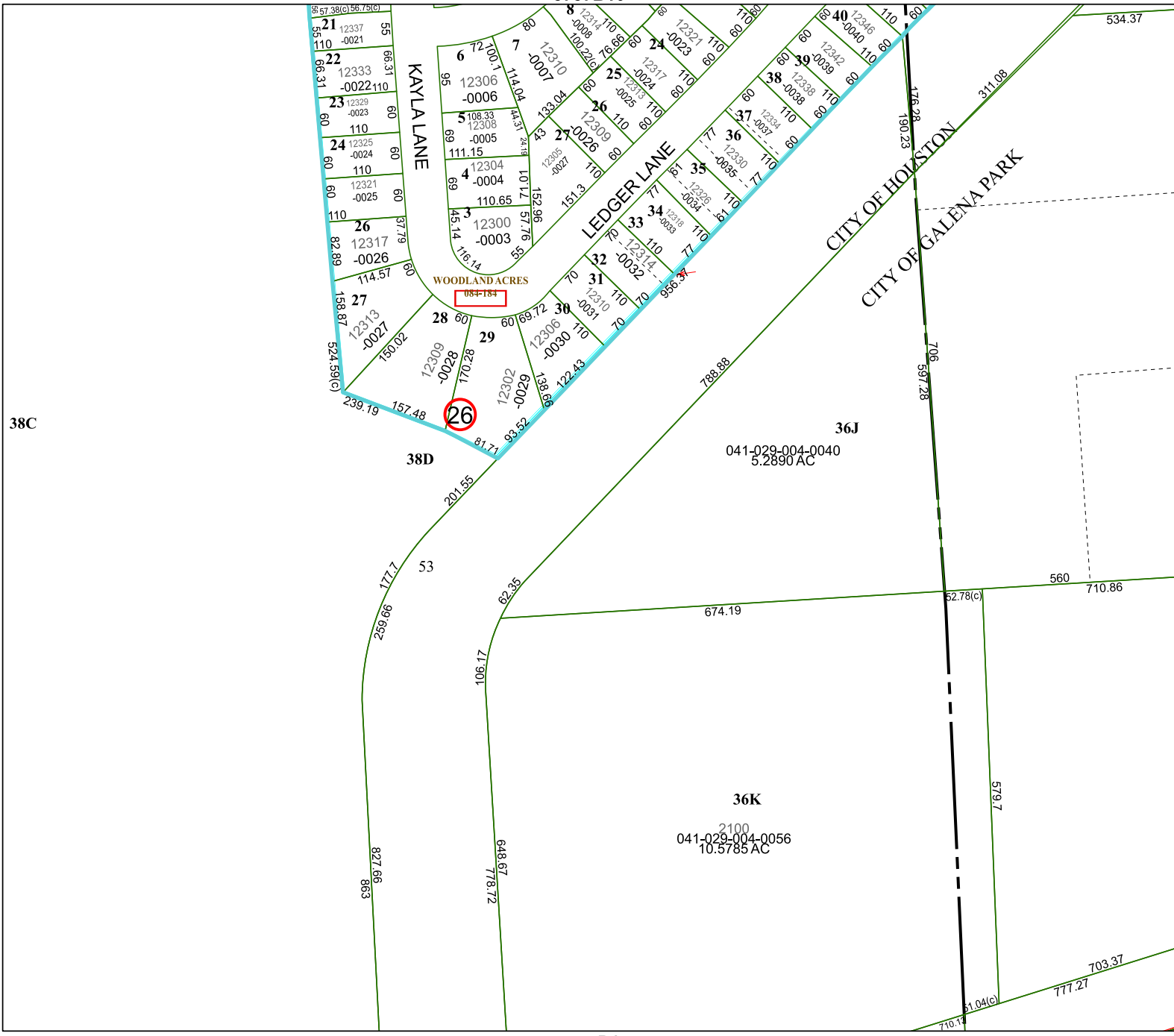


5757B10



Harris Central Appraisal District



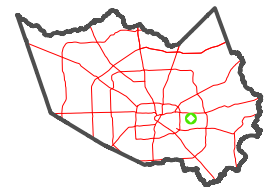
0 45 90 180 Feet

PUBLICATION DATE:
12/30/2023

Geospatial or map data maintained by the Harris Central Appraisal District is for informational purposes and may not have been prepared for or be suitable for legal, engineering, or surveying purposes. It does not represent an on-the-ground survey and only represents the approximate location of property boundaries.



MAP LOCATION



FACET

5757D2

12	9	10	11	12
4	1	2	3	4
8	5	6	7	8

38C

5757D1

5757D3

5757D6

36J
041-029-004-0040
5.2890 AC

36K
2100
041-029-004-0056
10.5785 AC