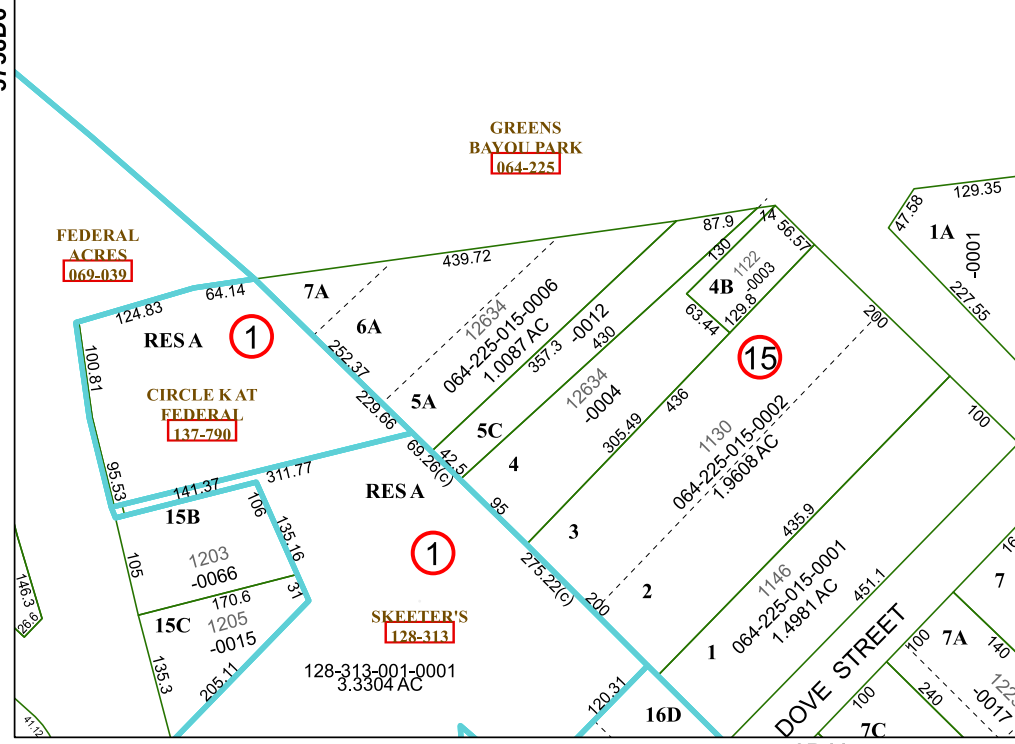
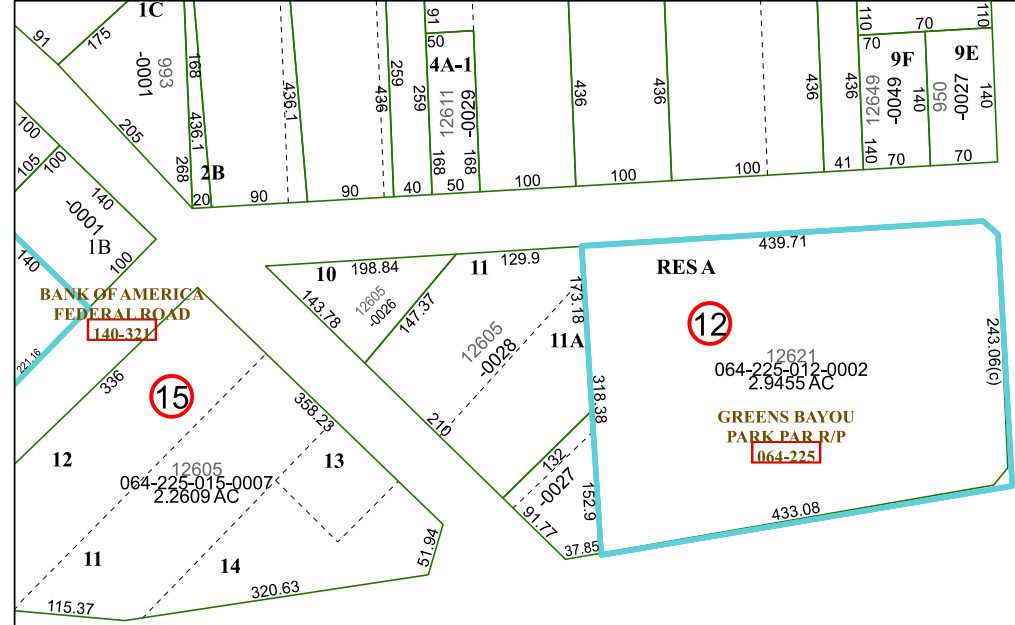
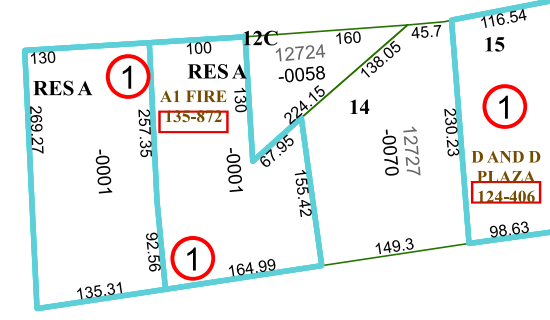


5758D3

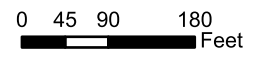


5758D6

I.H. 10 EAST

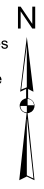
5758D11

Harris Central Appraisal District

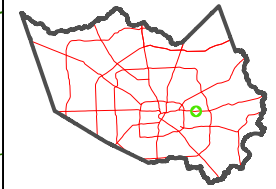


PUBLICATION DATE: 1/9/2023

Geospatial or map data maintained by the Harris Central Appraisal District is for informational purposes and may not be suitable for legal, engineering, or surveying purposes. It does not represent an on-the-ground survey and only represents the approximate location of property boundaries.



MAP LOCATION



FACET 5758D7

1	2	3	4	1
5	6	7	8	5
9	10	11	12	9