

5760D11

CITY OF HOUSTON

# Harris Central Appraisal District



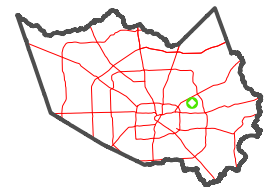
0 50 100 200 Feet

PUBLICATION DATE: 12/16/2025

Geospatial or map data maintained by the Harris Central Appraisal District is for informational purposes and may not have been prepared for or be suitable for legal, engineering, or surveying purposes. It does not represent an on-the-ground survey and only represents the approximate location of property boundaries.



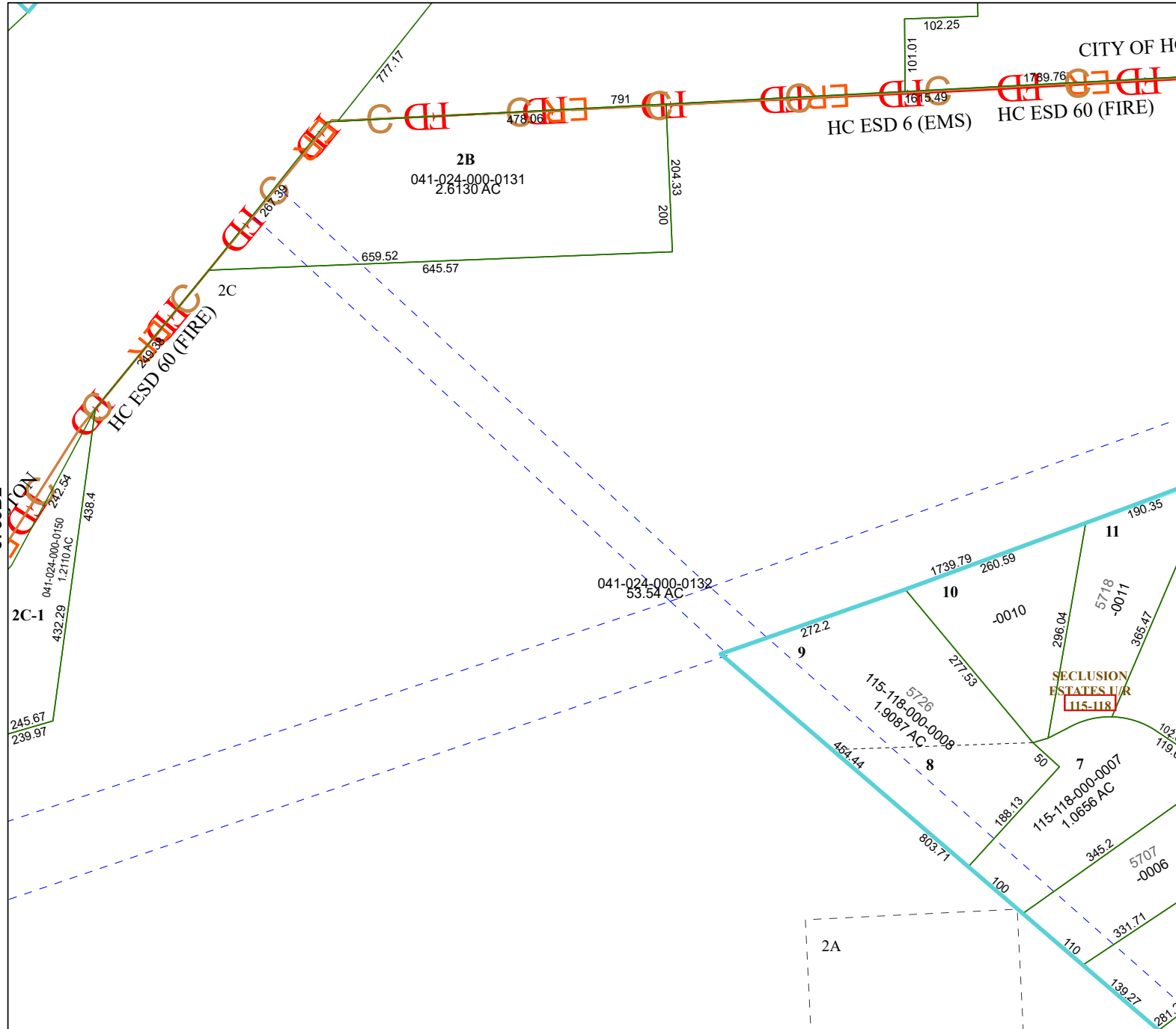
MAP LOCATION



## FACET 5759B3

9	10	11	12	9
1	2	3	4	1
5	6	7	8	5

5759B7



5759B2

5759B4