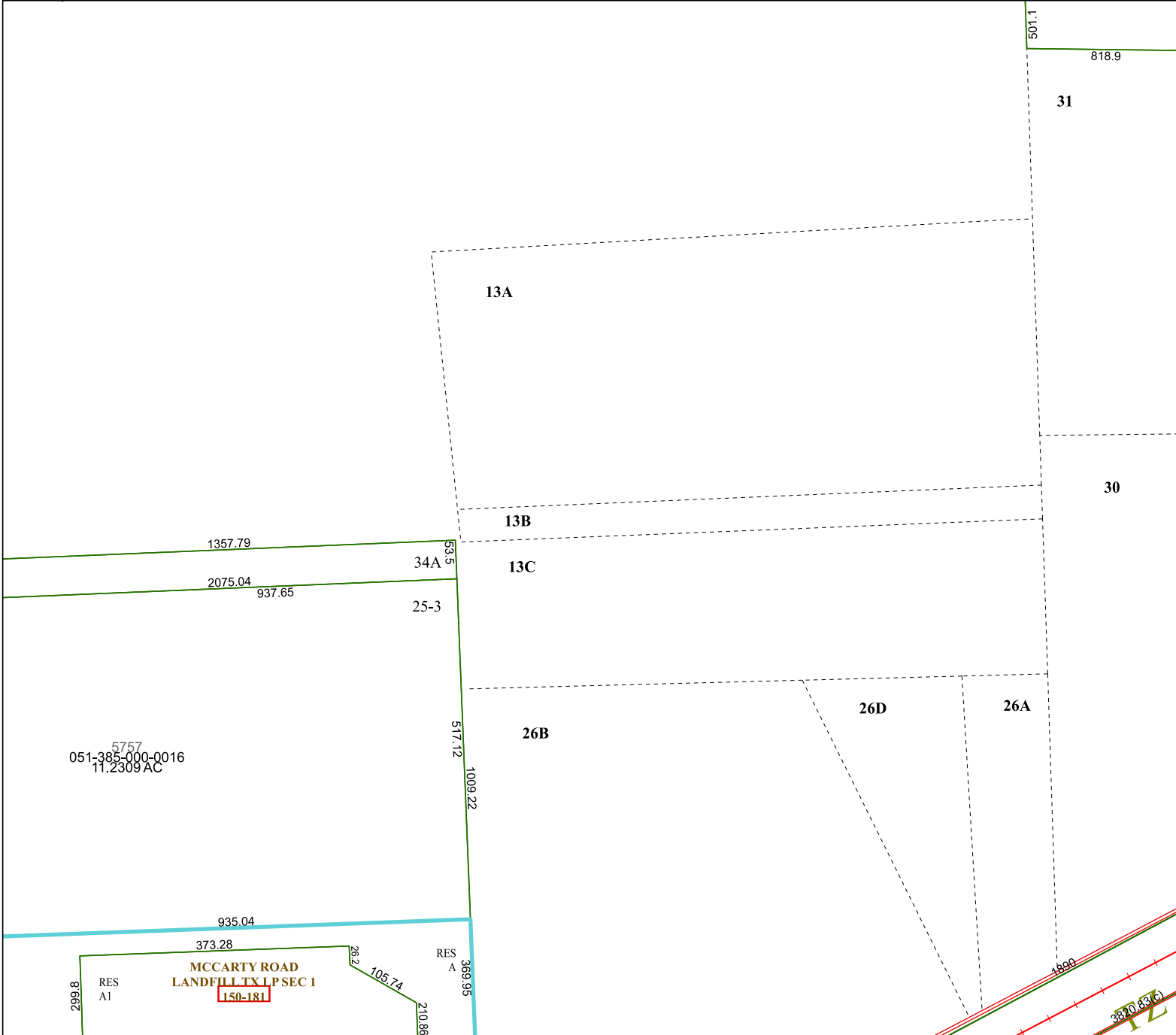


5760A9

5660D4



5760C5

Harris Central Appraisal District



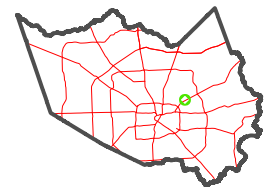
0 45 90 180
Feet

PUBLICATION DATE:
1/30/2023

Geospatial or map data maintained by the Harris Central Appraisal District is for informational purposes and may not have been prepared for or be suitable for legal, engineering, or surveying purposes. It does not represent an on-the-ground survey and only represents the approximate location of property boundaries.



MAP LOCATION



FACET

5760C1

11	12	9	10	11
3	4	1	2	3
7	8	5	6	7