

5760B11

RES B

Harris Central Appraisal District



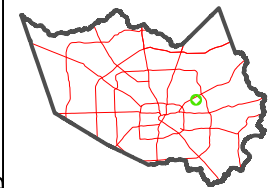
0 45 90 180 Feet

PUBLICATION DATE: 4/11/2023

Geospatial or map data maintained by the Harris Central Appraisal District is for informational purposes and may not have been prepared for or be suitable for legal, engineering, or surveying purposes. It does not represent an on-the-ground survey and only represents the approximate location of property boundaries.



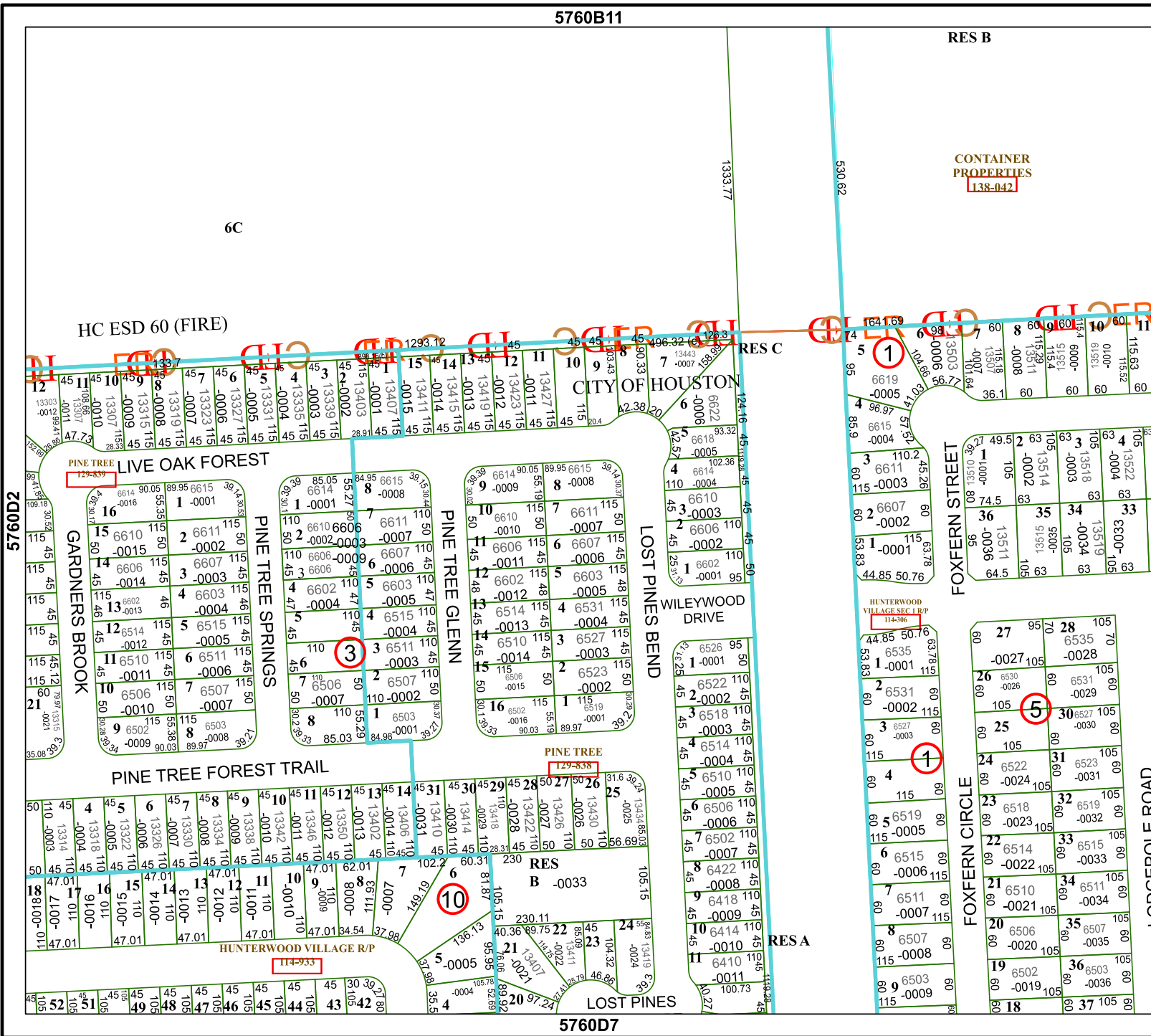
MAP LOCATION



FACET 5760D3

9	10	11	12	9
1	2	3	4	1
5	6	7	8	5

5760D7



HC ESD 60 (FIRE)

CITY OF HOUSTON

CONTAINER PROPERTIES
138-042

FOXFERN STREET

FOXFERN CIRCLE

LOST PINES BEND

WILEYPINE DRIVE

PINE TREE GLENN

PINE TREE SPRINGS

LIVE OAK FOREST

PINE TREE FOREST TRAIL

PINE TREE

RES B

LOST PINES

6C

5760D5

5760D4

5760D6