

5763B9

5763D5

# Harris Central Appraisal District

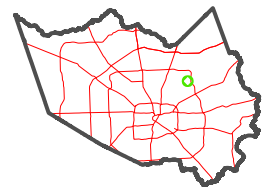


0 45 90 180 Feet

PUBLICATION DATE: 1/9/2023

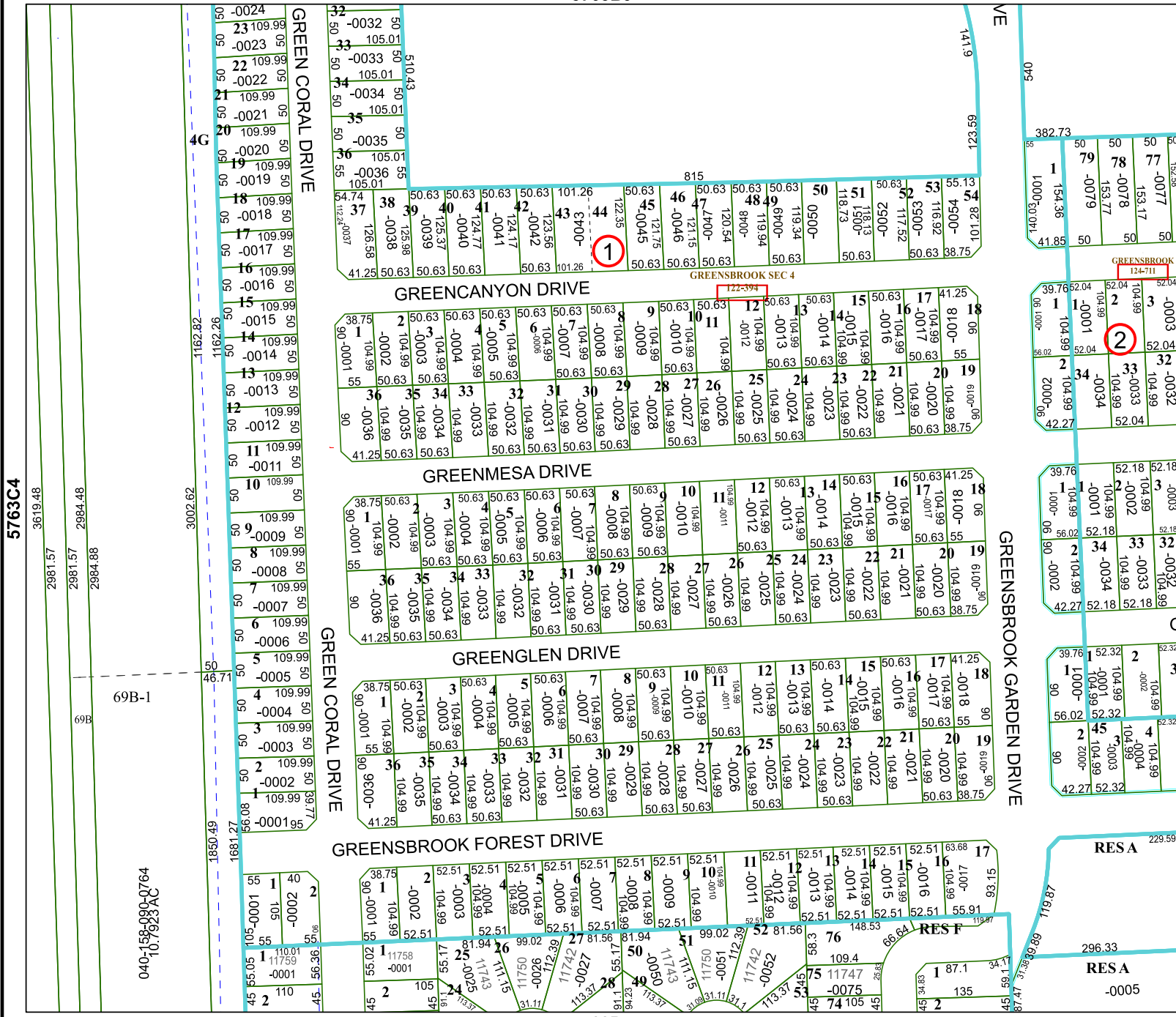
Geospatial or map data maintained by the Harris Central Appraisal District is for informational purposes and may not have been prepared for or be suitable for legal, engineering, or surveying purposes. It does not represent an on-the-ground survey and only represents the approximate location of property boundaries.

MAP LOCATION



## FACET 5763D1

11	12	9	10	11
3	4	1	2	3
7	8	5	6	7



5763C4

040-158599-0764  
10.7923AC

