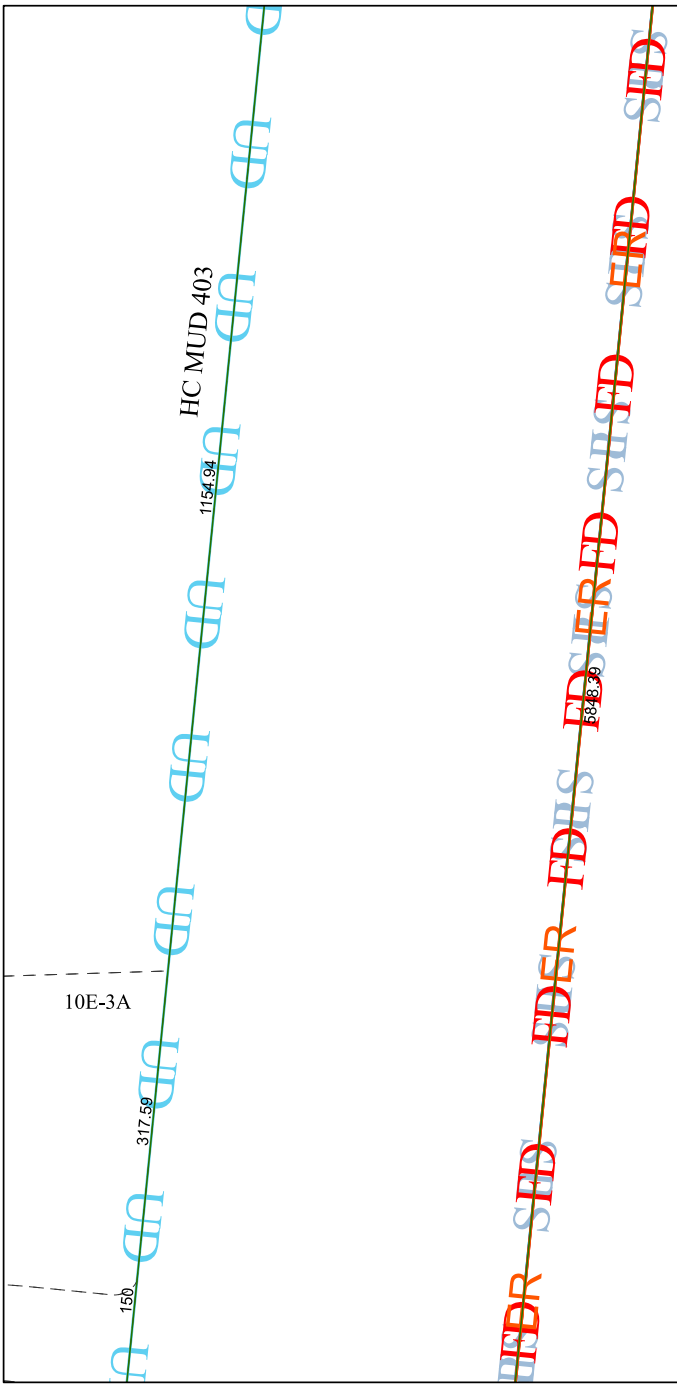


5764D8

10K

5764D11



5763B4

# Harris Central Appraisal District



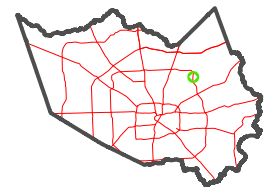
0 45 90 180  
Feet

PUBLICATION DATE:  
5/21/2024

Geospatial or map data maintained by the Harris Central Appraisal District is for informational purposes and may **not** have been prepared for or be suitable for legal, engineering, or surveying purposes. It does **not** represent an on-the-ground survey and only represents the approximate location of property boundaries.



### MAP LOCATION



## FACET

### 5764D12

6	7	8	5	6
10	11	12	9	10
2	3	4	1	2

5864C9