

# Harris Central Appraisal District

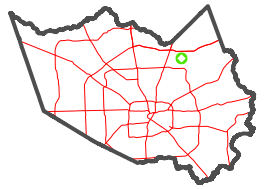


0 45 90 180 Feet

PUBLICATION DATE: 12/30/2023

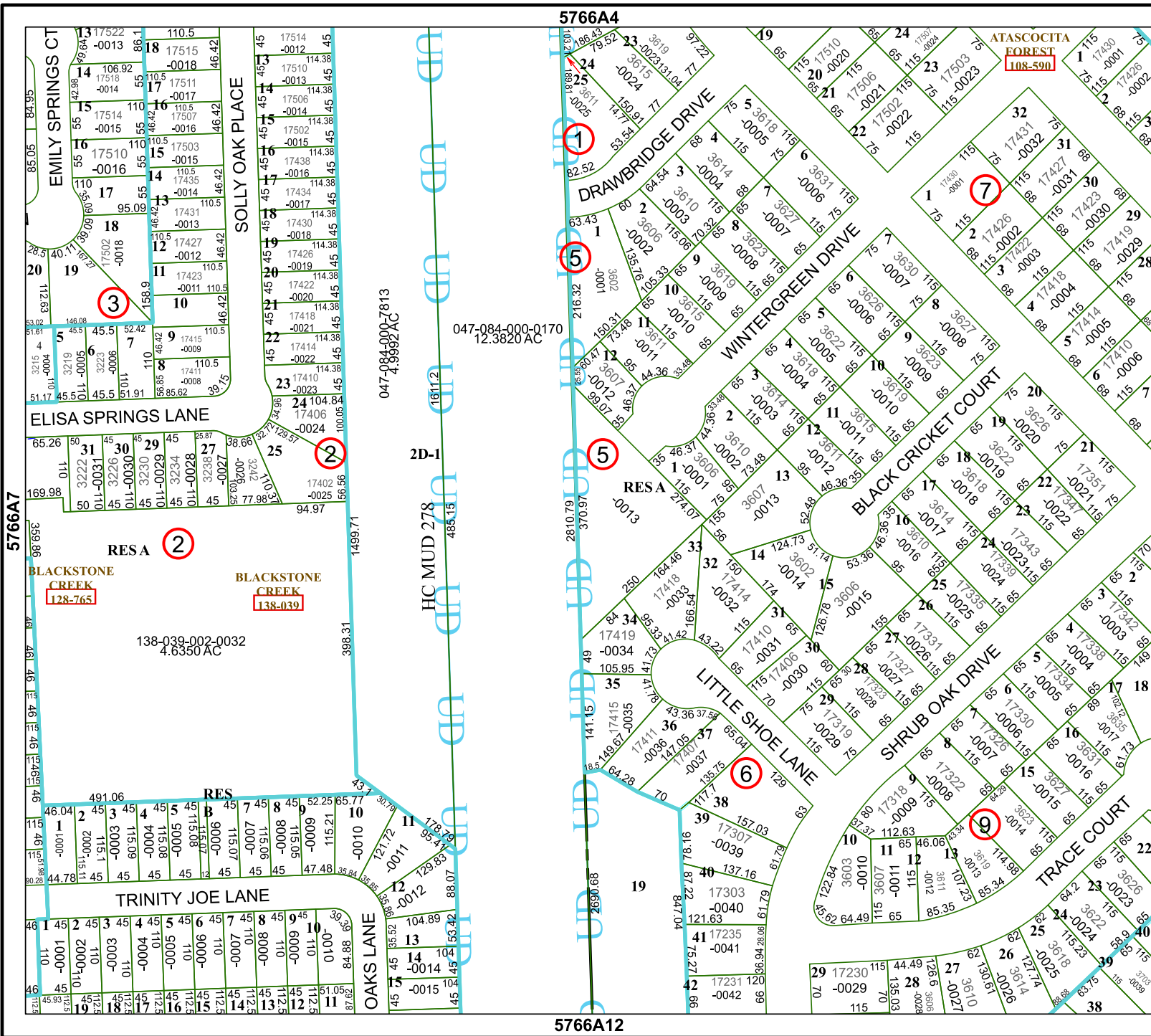
Geospatial or map data maintained by the Harris Central Appraisal District is for informational purposes and may not have been prepared for or be suitable for legal, engineering, or surveying purposes. It does not represent an on-the-ground survey and only represents the approximate location of property boundaries.

MAP LOCATION



## FACET 5766A8

2	3	4	1	2
6	7	8	5	6
10	11	12	9	10



5766A4

5766A12

5766A7

5766B5

047-084-000-7813  
4.9992AC

047-084-000-0170  
12.3820 AC

138-039-002-0032  
4.6350 AC