

Harris Central Appraisal District

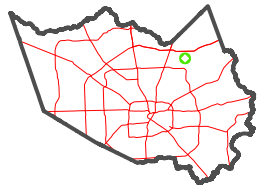


0 45 90 180 Feet

PUBLICATION DATE: 1/3/2023

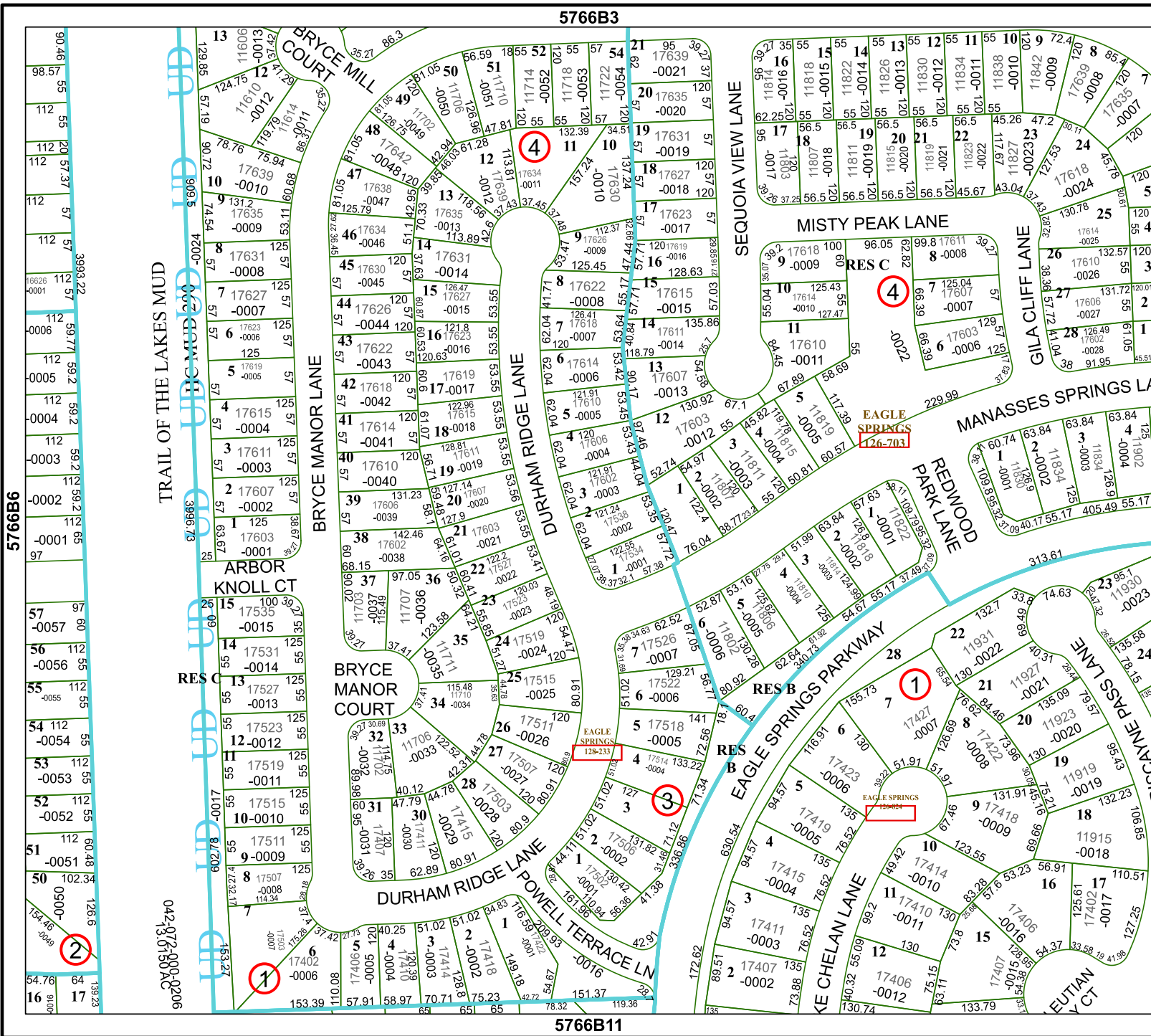
Geospatial or map data maintained by the Harris Central Appraisal District is for informational purposes and may not have been prepared for or be suitable for legal, engineering, or surveying purposes. It does not represent an on-the-ground survey and only represents the approximate location of property boundaries.

MAP LOCATION



FACET 5766B7

1	2	3	4	1
5	6	7	8	5
9	10	11	12	9



5766B6

5766B7

5766B3

5766B11

TRAIL OF THE LAKES MUD

042-078-000-0206
13-0130-000