

Harris Central Appraisal District



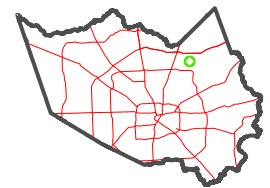
0 45 90 180 Feet

PUBLICATION DATE: 1/3/2023

Geospatial or map data maintained by the Harris Central Appraisal District is for informational purposes and may not have been prepared for or be suitable for legal, engineering, or surveying purposes. It does not represent an on-the-ground survey and only represents the approximate location of property boundaries.

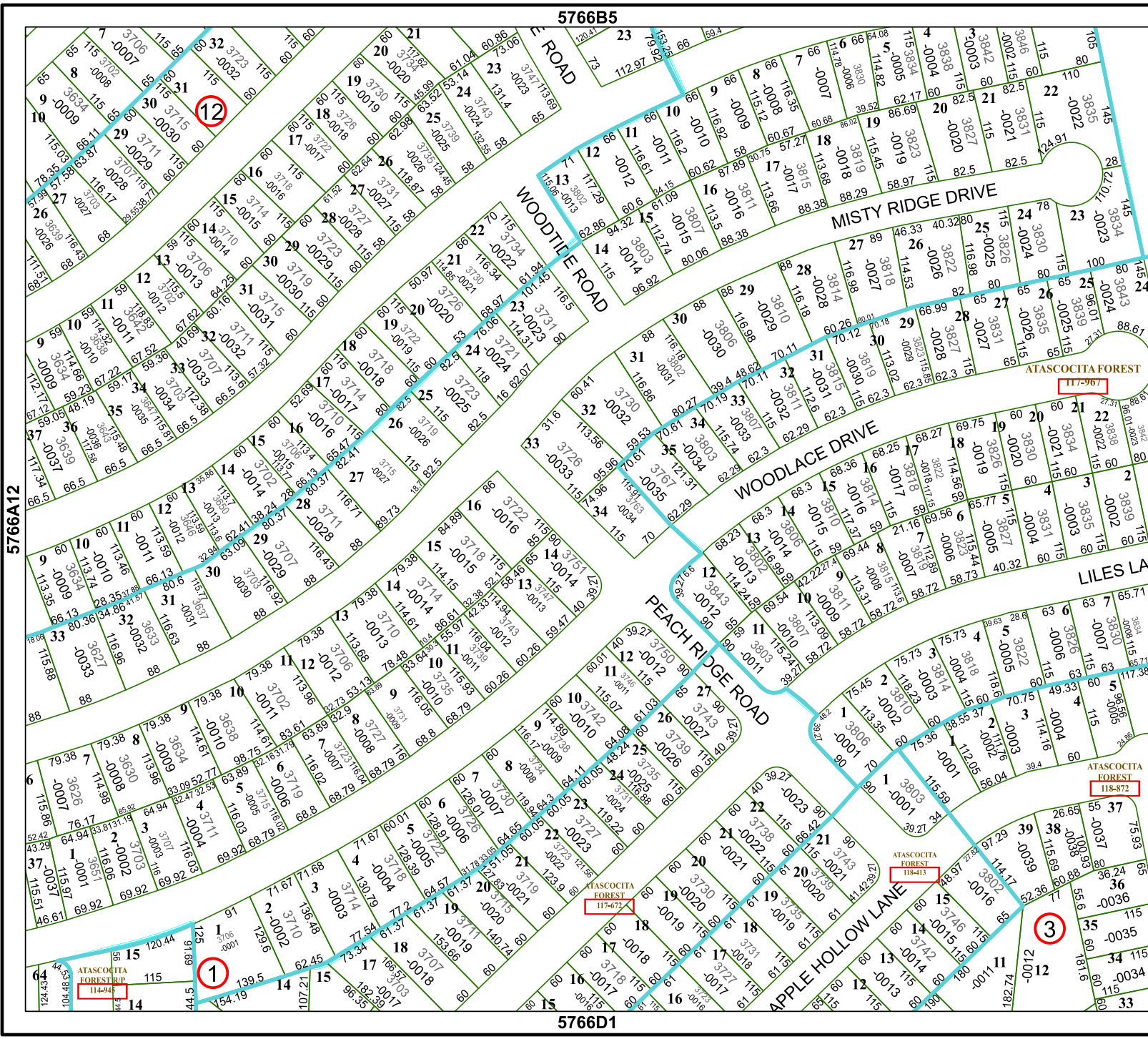


MAP LOCATION



FACET 5766B9

7	8	5	6	7
11	12	9	10	11
3	4	1	2	3



5766B5

5766D1

5766A12

5766B10

12

1

117-967

118-872

118-413

117-673

114-94