

Harris Central Appraisal District

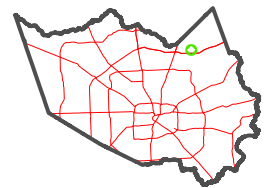


0 45 90 180 Feet

PUBLICATION DATE: 1/3/2023

Geospatial or map data maintained by the Harris Central Appraisal District is for informational purposes and may not have been prepared for or be suitable for legal, engineering, or surveying purposes. It does not represent an on-the-ground survey and only represents the approximate location of property boundaries.

MAP LOCATION



FACET 5768D4

10	11	12	9	10
2	3	4	1	2
6	7	8	5	6

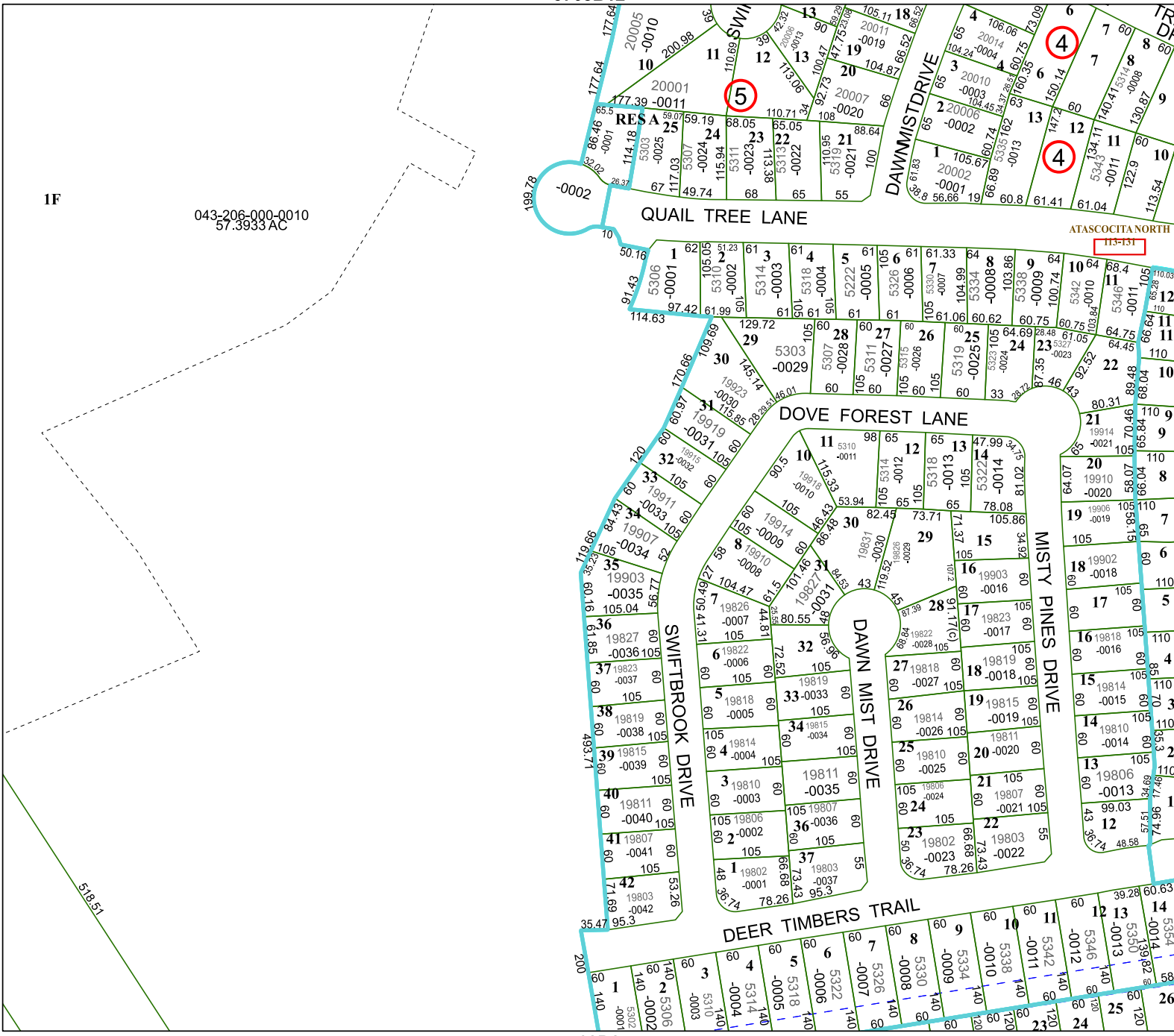
5768B12

1F

043-206-000-0010
57.3933 AC

5768D3

5768D8



5898C