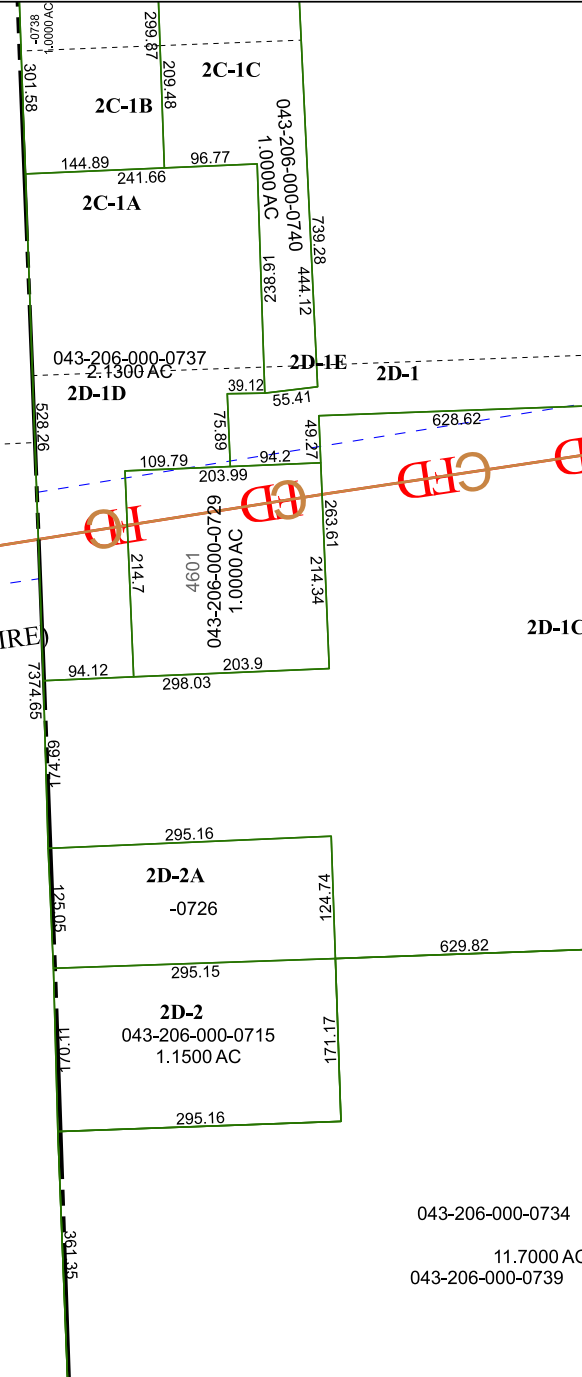


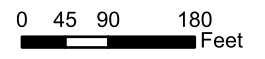
5768D2

5768D5

5768D10



Harris Central Appraisal District

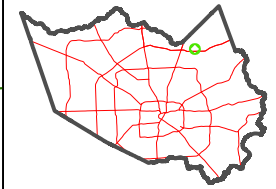


PUBLICATION DATE: 1/23/2024

Geospatial or map data maintained by the Harris Central Appraisal District is for informational purposes and may not have been prepared for or be suitable for legal, engineering, or surveying purposes. It does not represent an on-the-ground survey and only represents the approximate location of property boundaries.



MAP LOCATION



FACET 5768D6

4	1	2	3	4
8	5	6	7	8
12	9	10	11	12