

5770A6

5770A9

# Harris Central Appraisal District

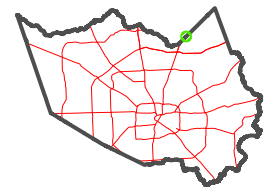


0 45 90 180  
Feet

PUBLICATION DATE:  
1/13/2025

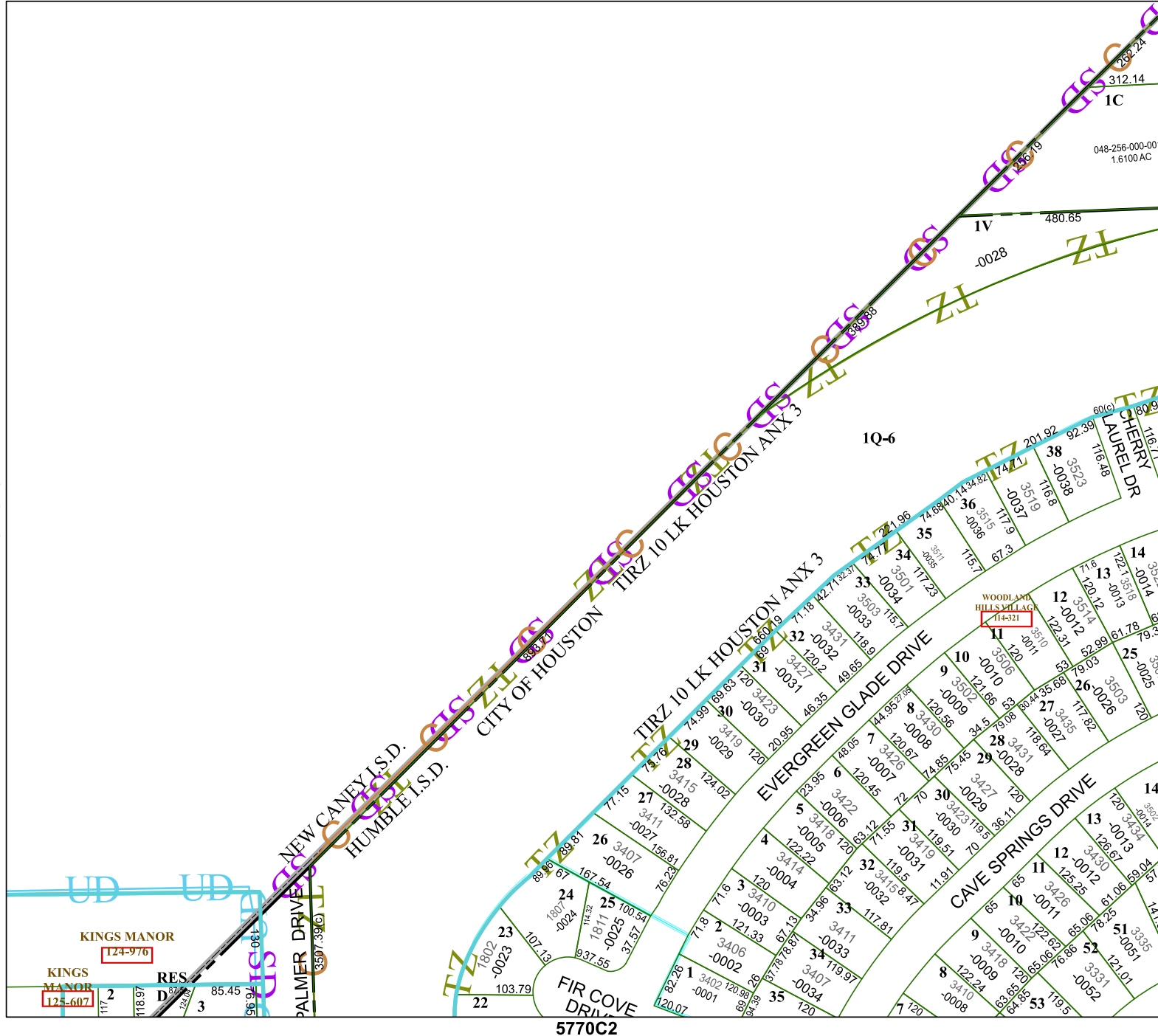
Geospatial or map data maintained by the Harris Central Appraisal District is for informational purposes and may **not** have been prepared for or be suitable for legal, engineering, or surveying purposes. It does **not** represent an on-the-ground survey and only represents the approximate location of property boundaries.

MAP LOCATION



## FACET 5770A10

	5	6	7	8
	9	10	11	12
4	1	2	3	4



5770C2