

Harris Central Appraisal District

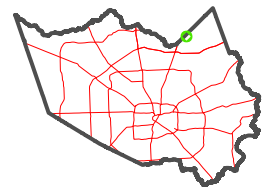


0 45 90 180 Feet

PUBLICATION DATE:
4/8/2024

Geospatial or map data maintained by the Harris Central Appraisal District is for informational purposes and may not have been prepared for or be suitable for legal, engineering, or surveying purposes. It does not represent an on-the-ground survey and only represents the approximate location of property boundaries.

MAP LOCATION



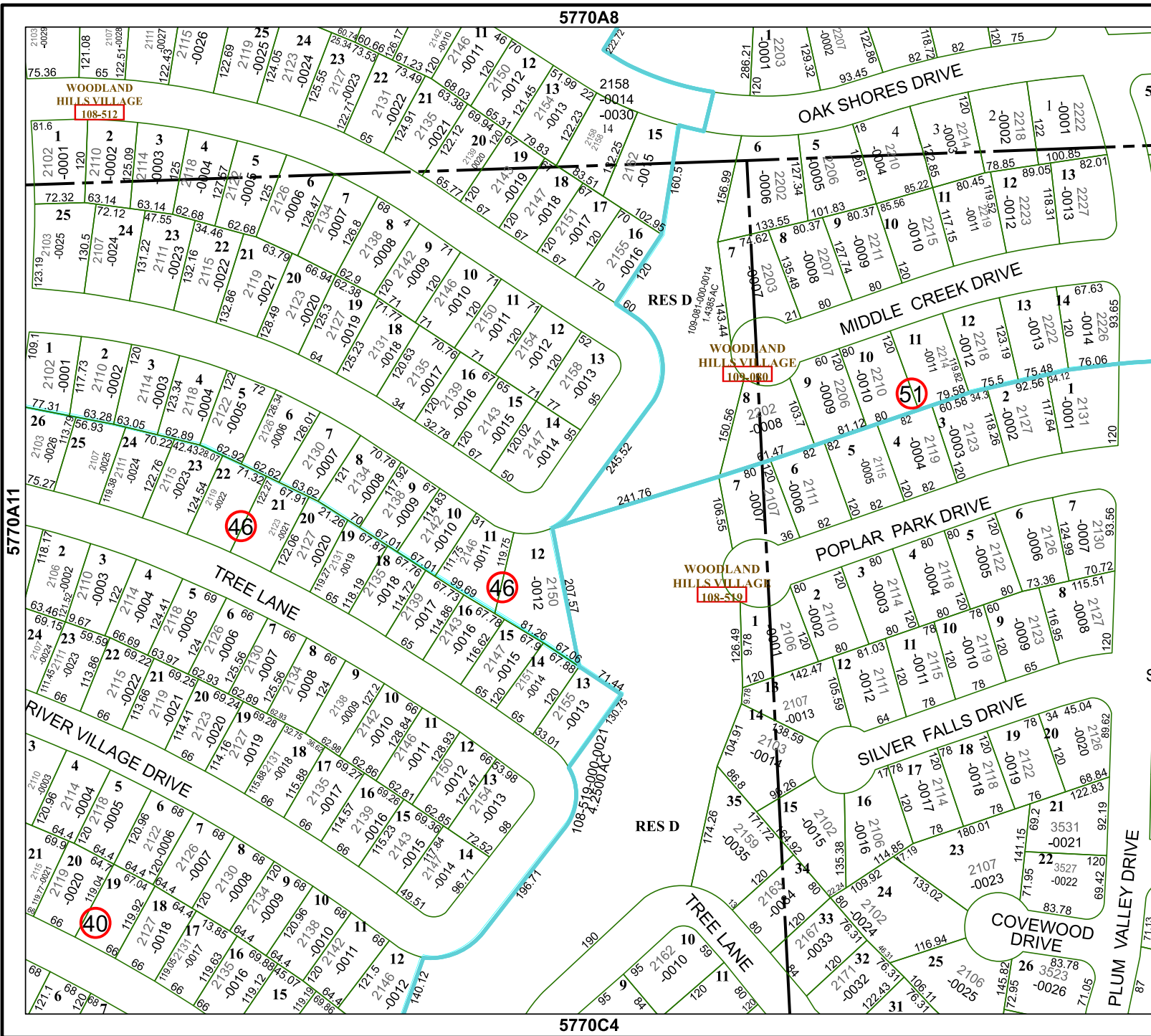
FACET

5770A12

6	7	8	5	6
10	11	12	9	10
2	3	4	1	2

5770A8

5770C4



5770A11

5770L5

