

Harris Central Appraisal District



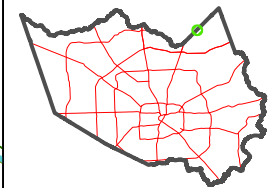
0 45 90 180 Feet

PUBLICATION DATE:
4/22/2024

Geospatial or map data maintained by the Harris Central Appraisal District is for informational purposes and may not be suitable for legal, engineering, or surveying purposes. It does not represent an on-the-ground survey and only represents the approximate location of property boundaries.



MAP LOCATION



FACET 5771B12

6	7	8	9	6
10	11	12	9	10
2	3	4	1	2

5771B8

3327
141-284-001-0001
41.4774 AC

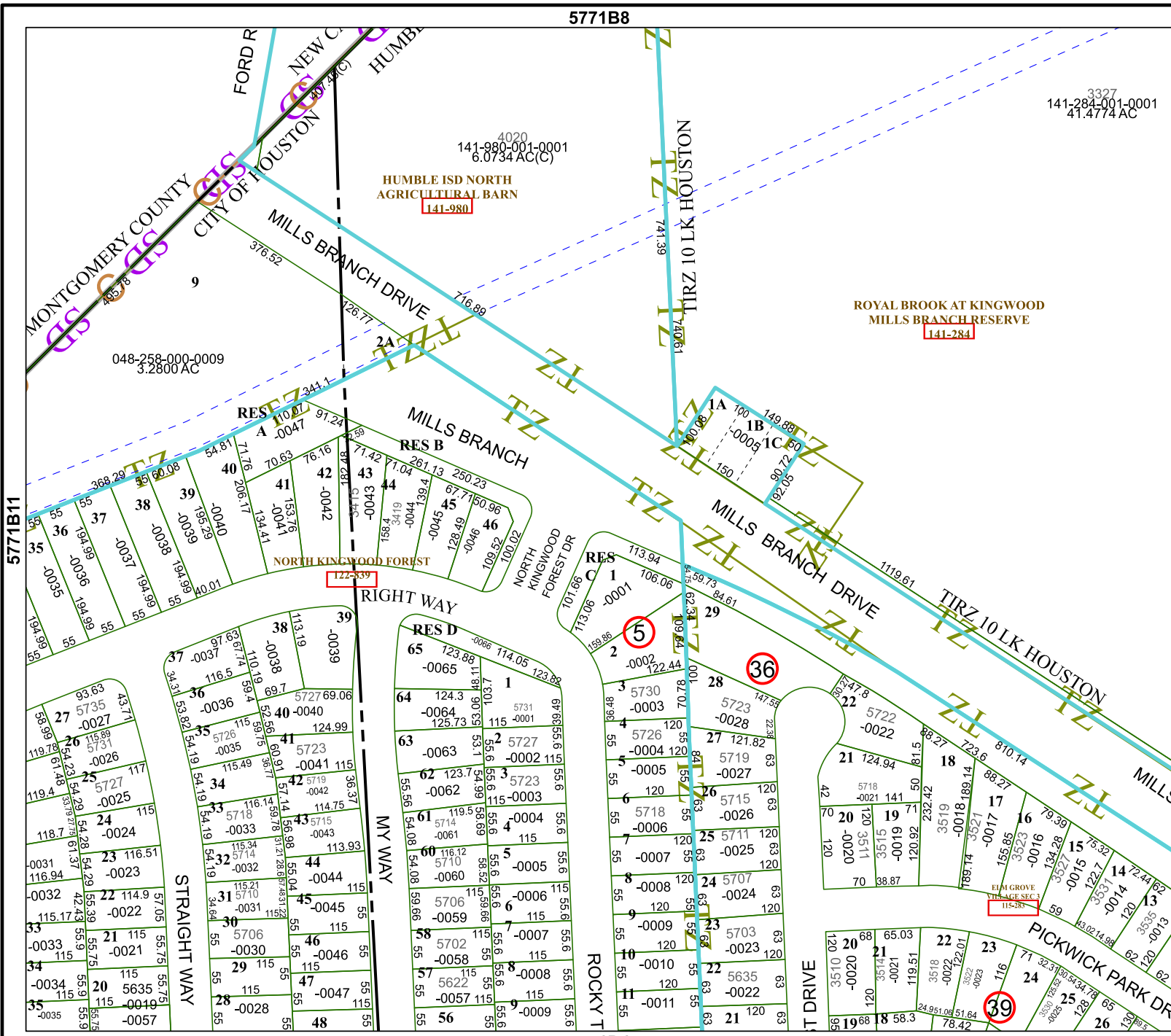
4020
141-980-001-0001
6.0734 AC(C)

HUMBLE ISD NORTH
AGRICULTURAL BARN
141-980

ROYAL BROOK AT KINGWOOD
MILLS BRANCH RESERVE
141-284

048-258-000-0009
3.2800 AC

5771D4



5771B11

5871A9