

Harris Central Appraisal District

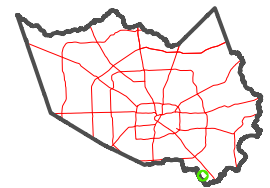


0 45 90 180 Feet

PUBLICATION DATE: 5/11/2023

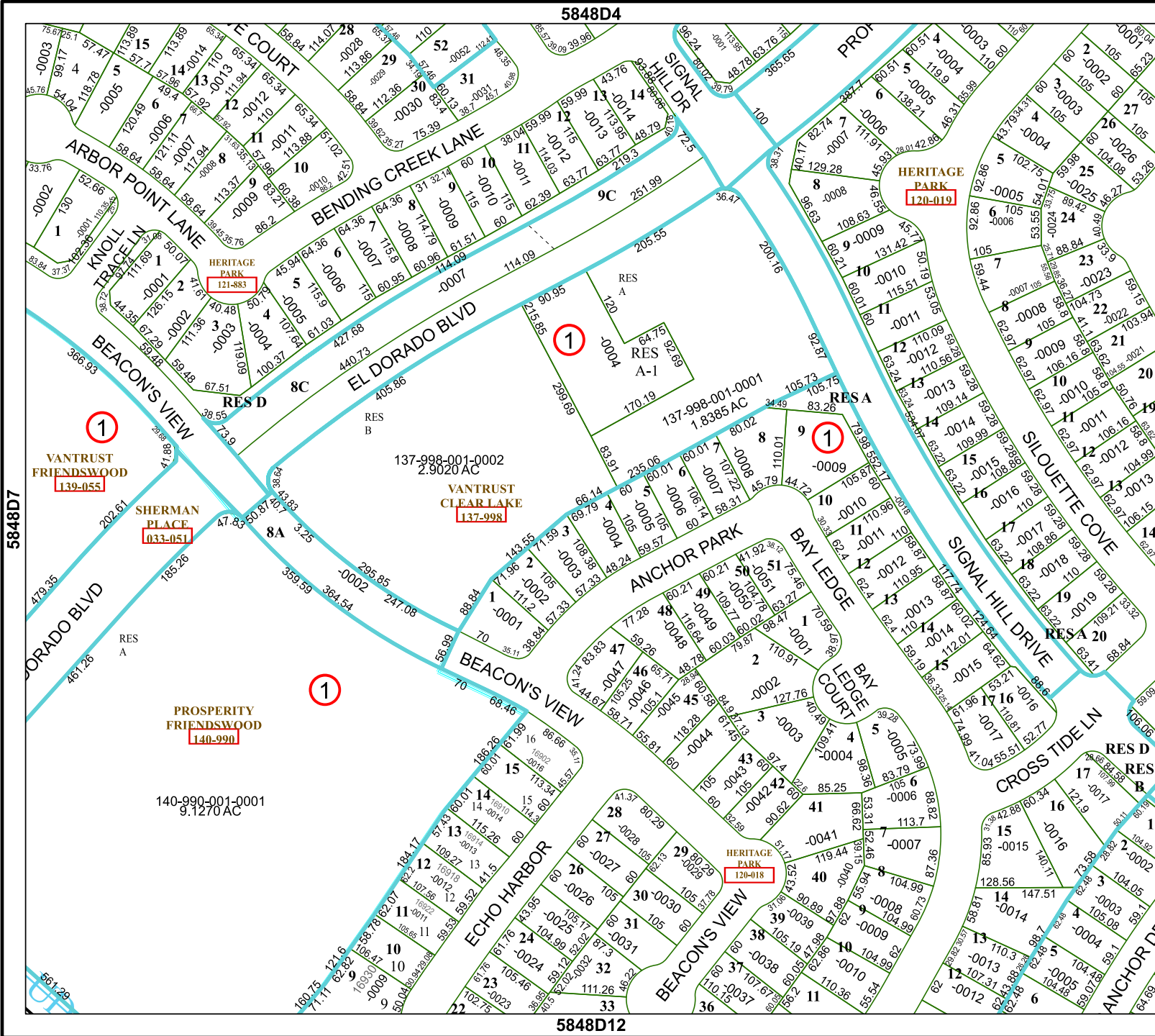
Geospatial or map data maintained by the Harris Central Appraisal District is for informational purposes and may not have been prepared for or be suitable for legal, engineering, or surveying purposes. It does not represent an on-the-ground survey and only represents the approximate location of property boundaries.

MAP LOCATION



FACET 5848D8

2	3	4	5	6
6	7	8	9	10
10	11	12	9	10



5848D4

5848D12

5848D7

5948C5