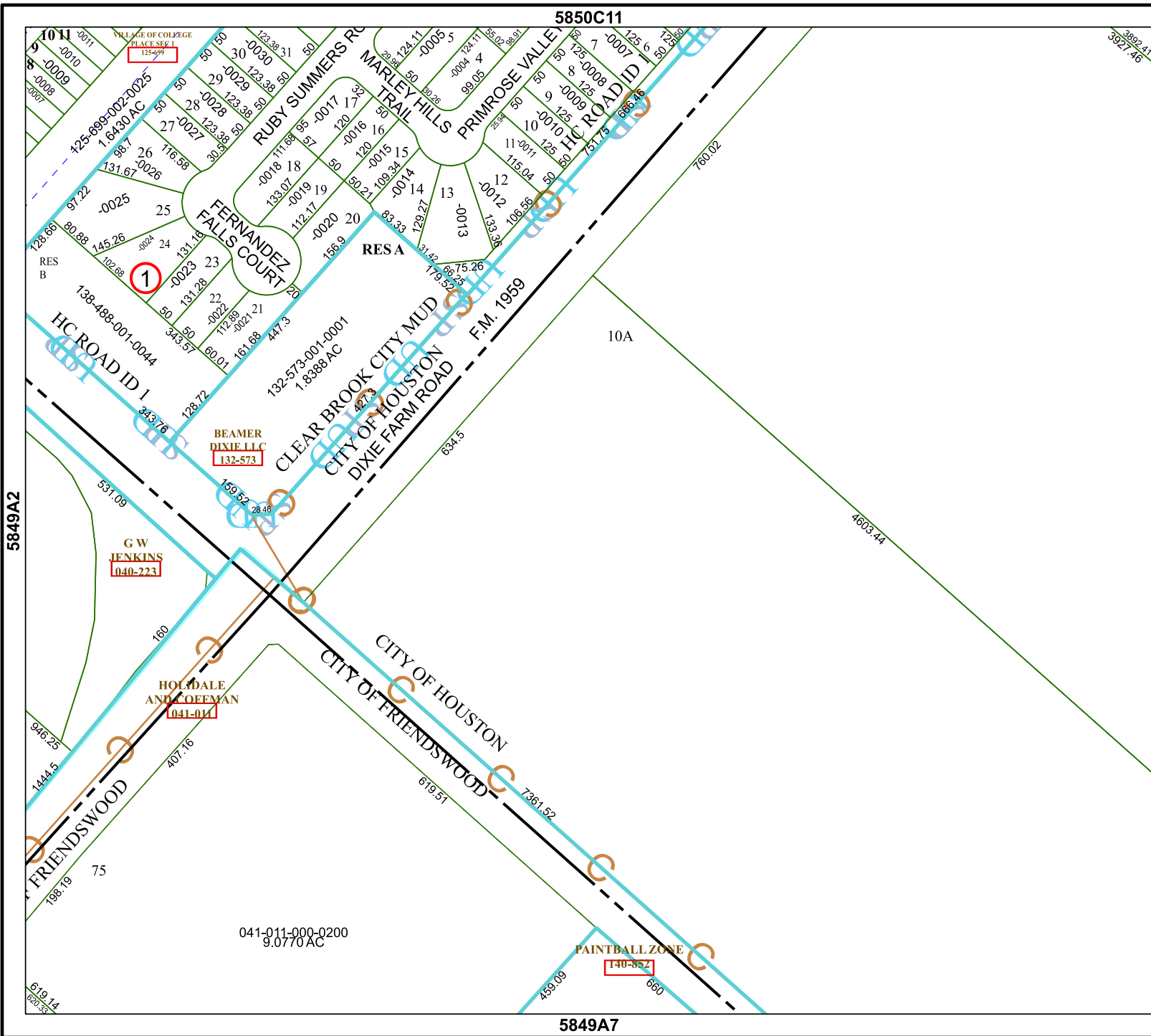


5850C11



Harris Central Appraisal District



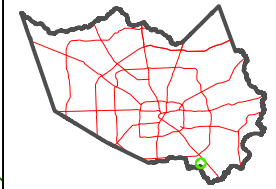
0 45 90 180 Feet

PUBLICATION DATE: 1/13/2025

Geospatial or map data maintained by the Harris Central Appraisal District is for informational purposes and may not have been prepared for or be suitable for legal, engineering, or surveying purposes. It does not represent an on-the-ground survey and only represents the approximate location of property boundaries.



MAP LOCATION



FACET 5849A3

9	10	11	12	9
1	2	3	4	1
5	6	7	8	5

5849A2

5849A4

5849A7

3892.41
3927.46

519.14
620.35

PAINTBALL ZONE
140-352

G.W. JENKINS
040-223

HOLDALE AND COEEMAN
041-011

BEAMER DIXIE LLC
132-573

1

VILLAGE OF COLLEGE PLACE SEC 1
125-999

041-011-000-0200
9.0770 AC

132-573-001-0001
1.8388 AC

138-488-001-0044
243.76

125-699-002-0025
1.6430 AC

FERNANDEZ FALLS COURT

RESA

CLEAR BROOK CITY MUD
CITY OF HOUSTON
DIXIE FARM ROAD
F.M. 1959

CITY OF HOUSTON
CITY OF FRIENDSWOOD

HC ROAD ID 1

TRAIL HILLS
PRIMROSE VALLEY
HC ROAD ID 1

RUBY SUMMERS RD

MARLEY HILLS

10A

760.02

4603.74

634.5

619.51

7361.52

459.09

660

160

75

1444.5

946.25

531.09

128.86

97.22

1011

131.67

118.58

123.38

123.38

123.38

123.38

123.38

123.38

123.38

123.38

123.38

123.38

123.38

123.38

123.38

123.38

123.38

123.38

123.38

123.38

123.38

123.38

123.38

123.38

123.38

123.38

123.38

123.38

123.38

123.38

123.38

123.38

123.38

123.38

123.38

123.38

123.38

123.38

123.38

123.38

123.38

123.38

123.38

123.38

123.38

123.38

123.38

123.38

123.38

123.38

123.38

123.38

123.38

123.38

123.38

123.38

123.38

123.38

123.38

123.38

123.38

123.38

123.38

123.38

123.38

123.38

123.38

123.38

123.38

123.38

123.38

123.38

123.38

123.38

123.38

123.38

123.38

123.38

123.38

123.38

123.38

123.38

123.38

123.38

123.38

123.38

123.38

123.38

123.38

123.38

123.38

123.38

123.38

123.38

123.38

123.38

123.38

123.38

123.38

123.38

123.38

123.38

123.38

123.38

123.38

123.38

123.38

123.38

123.38

123.38

123.38

123.38

123.38

123.38

123.38

123.38

123.38

123.38

123.38

123.38

123.38

123.38

123.38

123.38

123.38

123.38

123.38

123.38

123.38

123.38

123.38

123.38

123.38

123.38

123.38

123.38

123.38

123.38

123.38

123.38

123.38

123.38

123.38

123.38

123.38

123.38

123.38

123.38

123.38

123.38

123.38

123.38

123.38

123.38

123.38

123.38

123.38

123.38

123.38

123.38

123.38

123.38

123.38

123.38

123.38

123.38

123.38

123.38

123.38

123.38

123.38

123.38

123.38

123.38

123.38

123.38

123.38

123.38

123.38

123.38

123.38

123.38

123.38

123.38

123.38

123.38

123.38

123.38

123.38

123.38

123.38

123.38

123.38

123.38

123.38

123.38

123.38

123.38

123.38

123.38

123.38

123.38

123.38

123.38

123.38

123.38

123.38

123.38

123.38

123.38

123.38

123.38

123.38

123.38

123.38

123.38

123.38

123.38

123.38

123.38

123.38

123.38

123.38

123.38

123.38

123.38

123.38

123.38

123.38

123.38

123.38

123.38

123.38

123.38

123.38

123.38