

# Harris Central Appraisal District

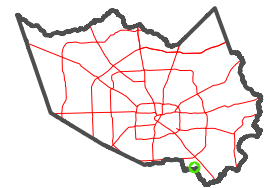


0 45 90 180 Feet

PUBLICATION DATE:  
12/30/2023

Geospatial or map data maintained by the Harris Central Appraisal District is for informational purposes and may not have been prepared for or be suitable for legal, engineering, or surveying purposes. It does not represent an on-the-ground survey and only represents the approximate location of property boundaries.

## MAP LOCATION

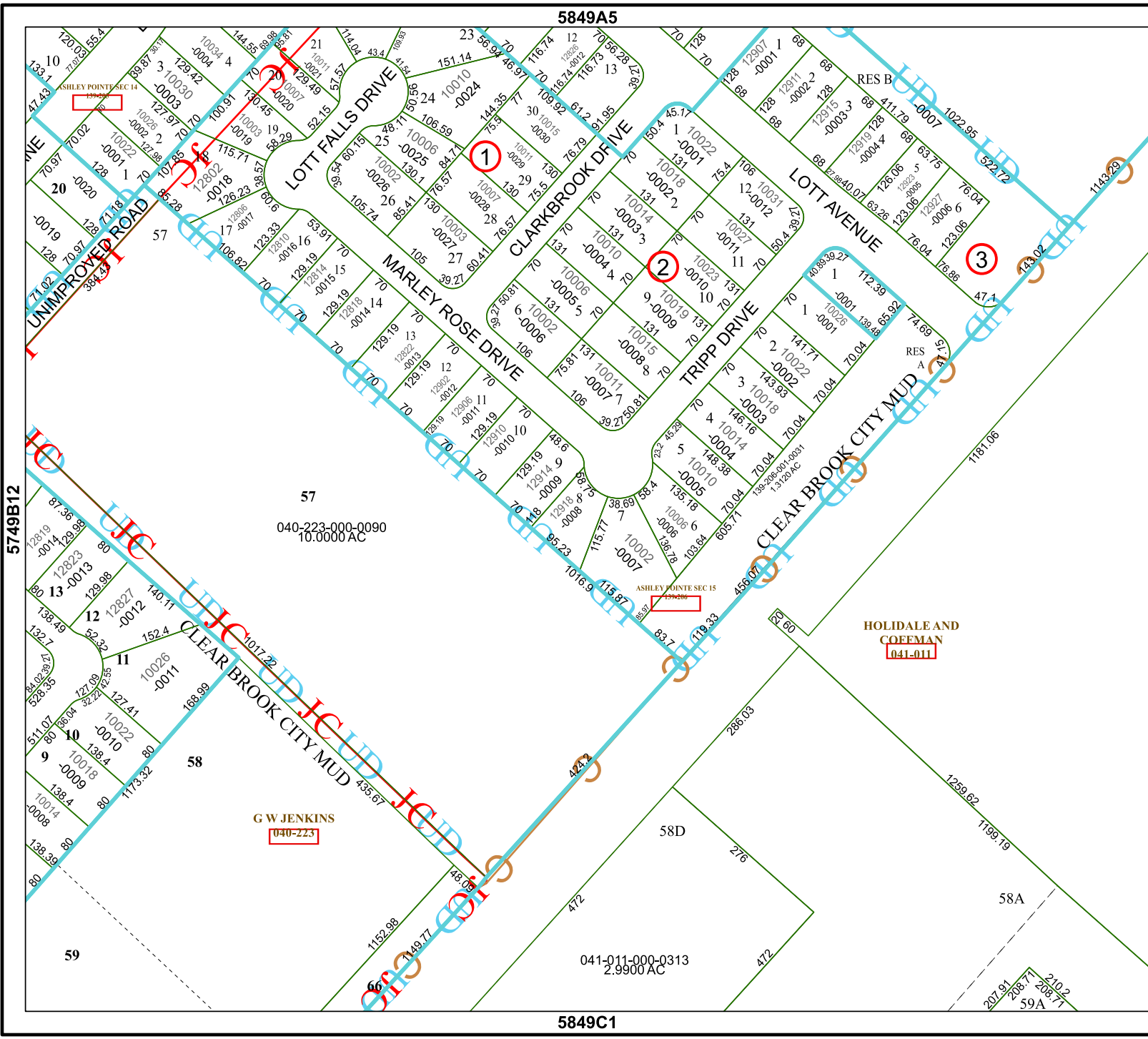


# FACET 5849A9

7	8	5	6	7
11	12	9	10	11
3	4	1	2	3

5849A5

5849C1



57  
040-223-000-0090  
10.0000 AC

G W JENKINS  
040-223

041-011-000-0313  
2.9900 AC

HOLIDALE AND  
COFFMAN  
041-011

5749B12

5849A10

