

Harris Central Appraisal District

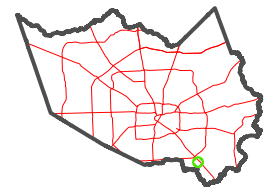


0 45 90 180 Feet

PUBLICATION DATE: 1/3/2023

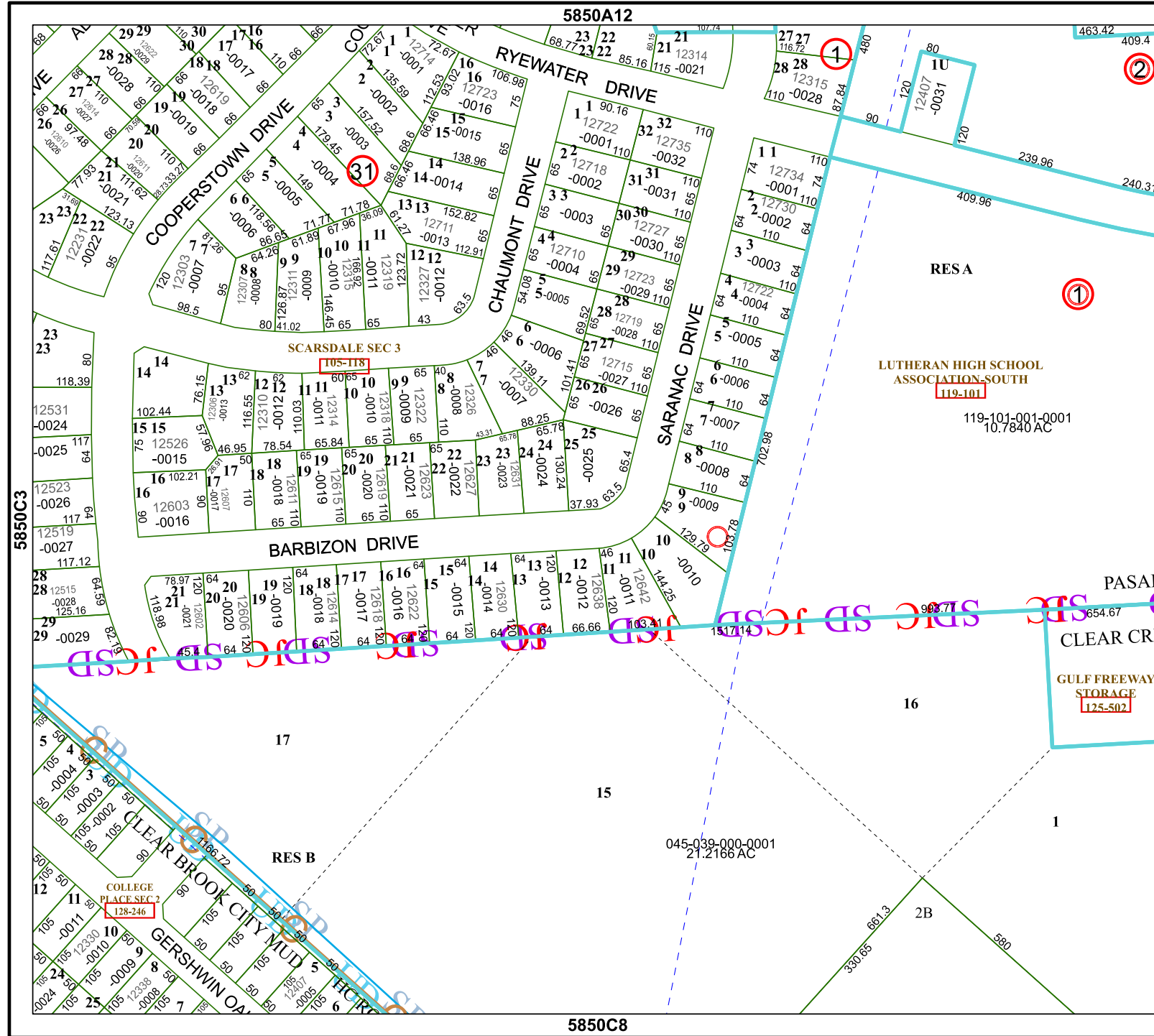
Geospatial or map data maintained by the Harris Central Appraisal District is for informational purposes and may not have been prepared for or be suitable for legal, engineering, or surveying purposes. It does not represent an on-the-ground survey and only represents the approximate location of property boundaries.

MAP LOCATION



FACET 5850C4

10	11	12	9	10
2	3	4	1	2
6	7	8	5	6



RESA
 LUTHERAN HIGH SCHOOL ASSOCIATION-SOUTH
 119-101
 119-101-001-0001
 10.7840 AC

045-039-000-0001
 21.2168 AC

COLLEGE PLACE SEC 2
 128-246

SCARSDALE SEC 3
 105-118

5850C3

5850D1

5850C8

5850A12