

5850D2

5850D5

Harris Central Appraisal District



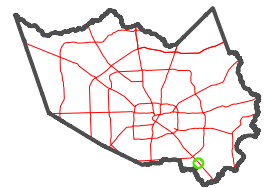
0 45 90 180
Feet

PUBLICATION DATE:
5/30/2024

Geospatial or map data maintained by the Harris Central Appraisal District is for informational purposes and may not have been prepared for or be suitable for legal, engineering, or surveying purposes. It does not represent an on-the-ground survey and only represents the approximate location of property boundaries.

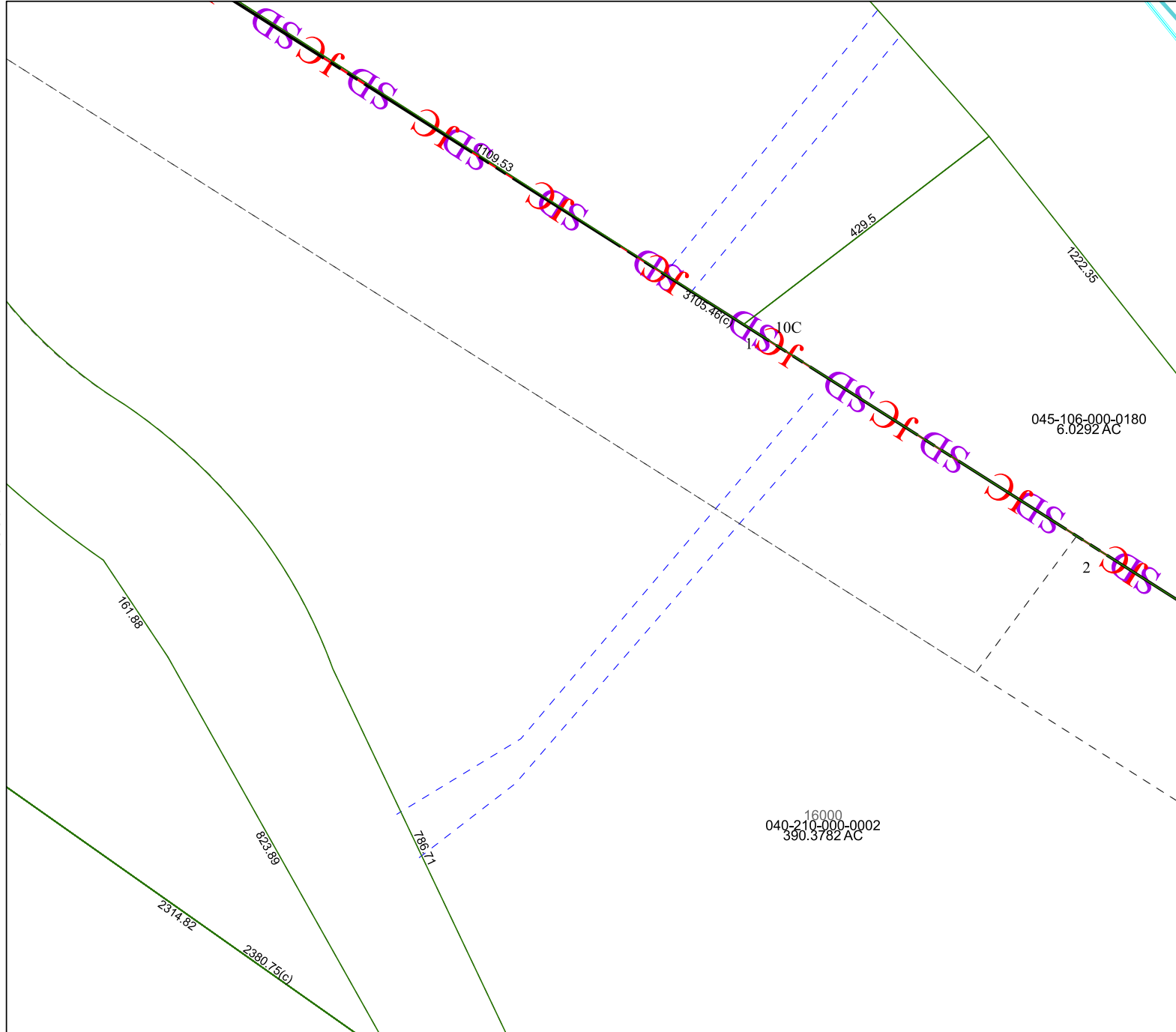


MAP LOCATION



FACET 5850D6

4	1	2	3	4
8	5	6	7	8
12	9	10	11	12



5850D10