

5851D3

Harris Central Appraisal District



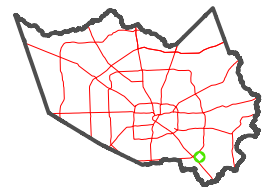
0 45 90 180
Feet

PUBLICATION DATE:
1/29/2024

Geospatial or map data maintained by the Harris Central Appraisal District is for informational purposes and may **not** have been prepared for or be suitable for legal, engineering, or surveying purposes. It does **not** represent an on-the-ground survey and only represents the approximate location of property boundaries.



MAP LOCATION



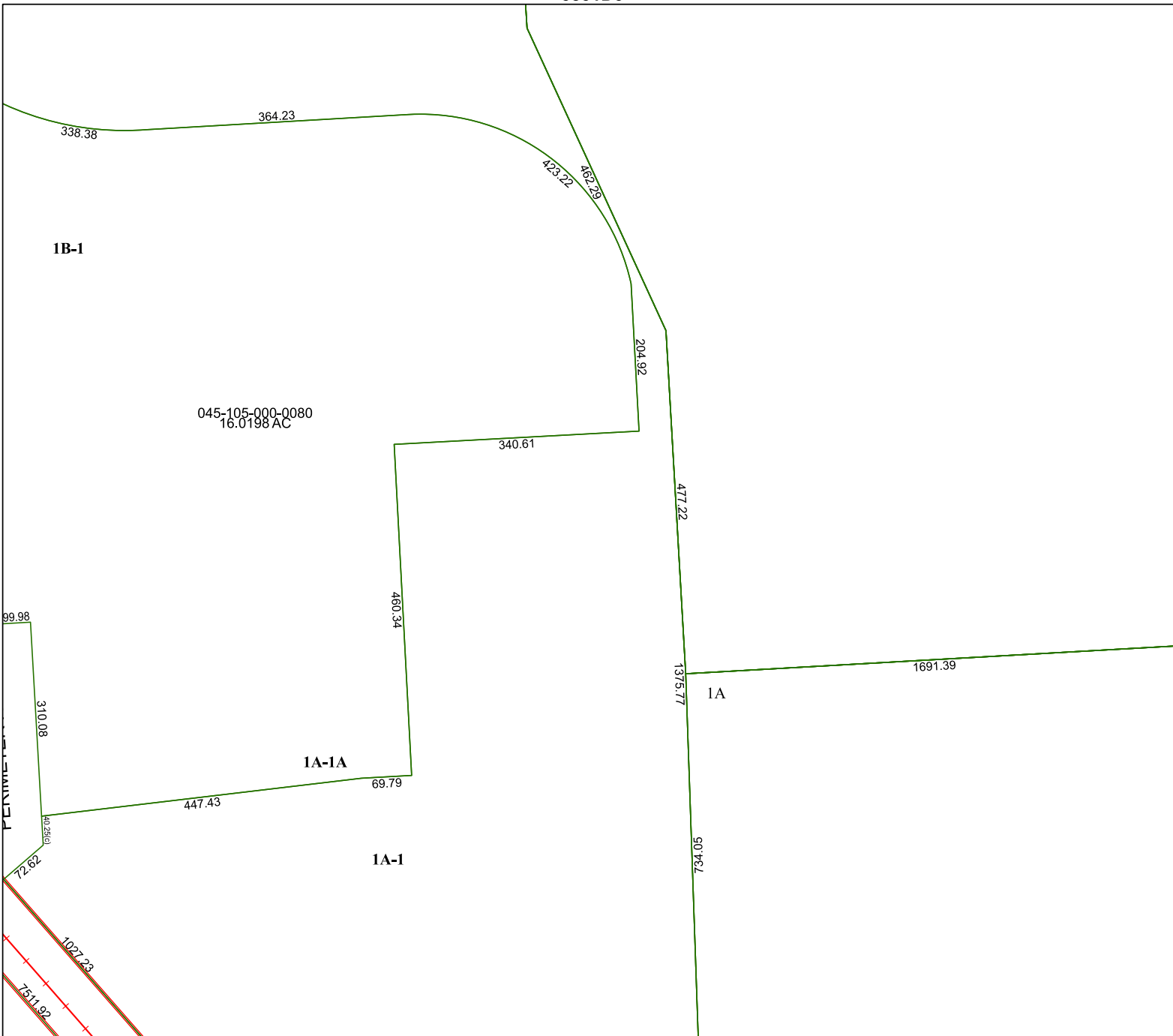
FACET 5851D7

1	2	3	4	1
5	6	7	8	5
9	10	11	12	9

5851D11

5851D6

5851D8



045-105-000-0080
16.0198 AC

1B-1

1A-1A

1A-1

1A