

5853C12

5852A8

Harris Central Appraisal District

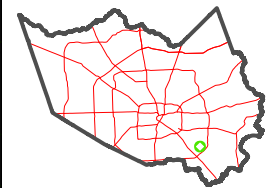


0 45 90 180 Feet

PUBLICATION DATE: 1/3/2023

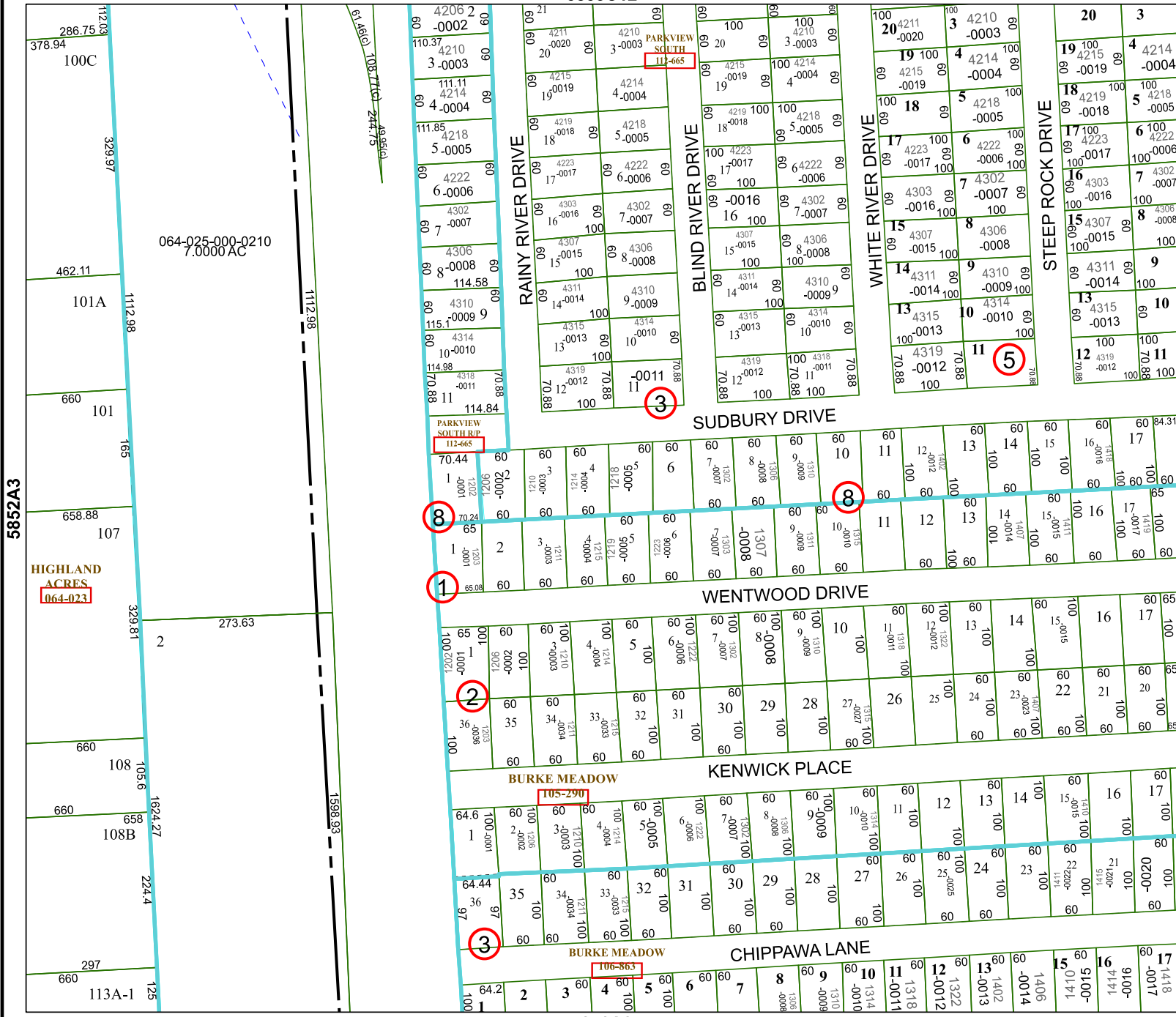
Geospatial or map data maintained by the Harris Central Appraisal District is for informational purposes and may not have been prepared for or be suitable for legal, engineering, or surveying purposes. It does not represent an on-the-ground survey and only represents the approximate location of property boundaries.

MAP LOCATION



FACET 5852A4

10	11	12	9	10
2	3	4	1	2
6	7	8	5	6



064-025-000-0210
7.0000 AC

5852A3

HIGHLAND ACRES
064-023

5852B1