

Harris Central Appraisal District

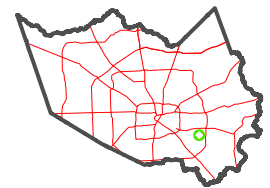


0 45 90 180 Feet

PUBLICATION DATE: 2/13/2023

Geospatial or map data maintained by the Harris Central Appraisal District is for informational purposes and may not have been prepared for or be suitable for legal, engineering, or surveying purposes. It does not represent an on-the-ground survey and only represents the approximate location of property boundaries.

MAP LOCATION

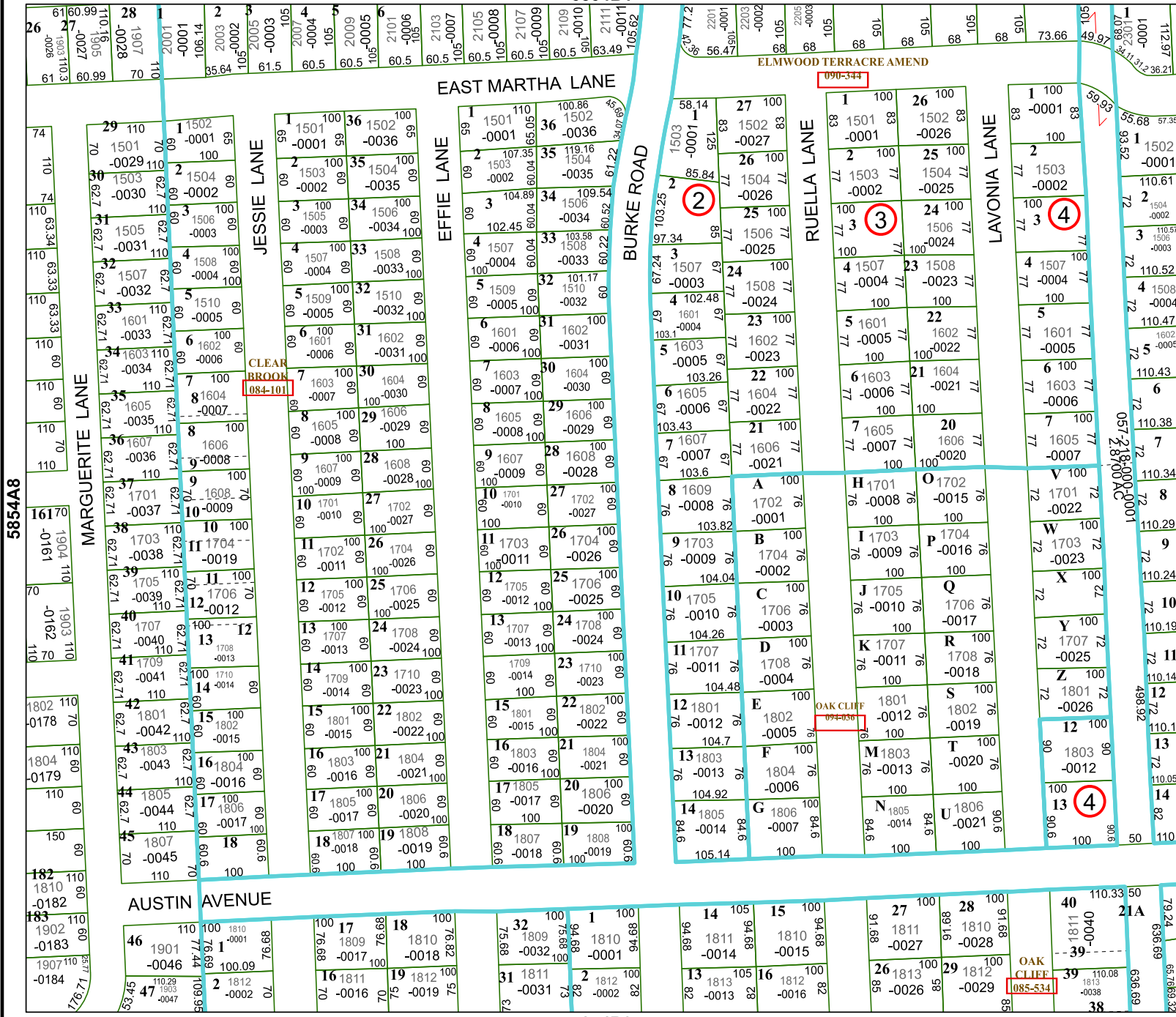


FACET 5854B5

3	4	1	2	3
7	8	5	6	7
11	12	9	10	11

5854B1

5854B9



5854AB

5854BB

5854B5