

5854B9

4

HOUSTON SUBURBAN
ESTATES
1057-217

Harris Central Appraisal District

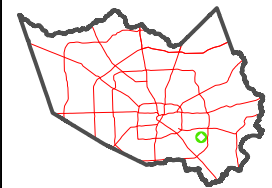


0 45 90 180
Feet

PUBLICATION DATE:
12/30/2023

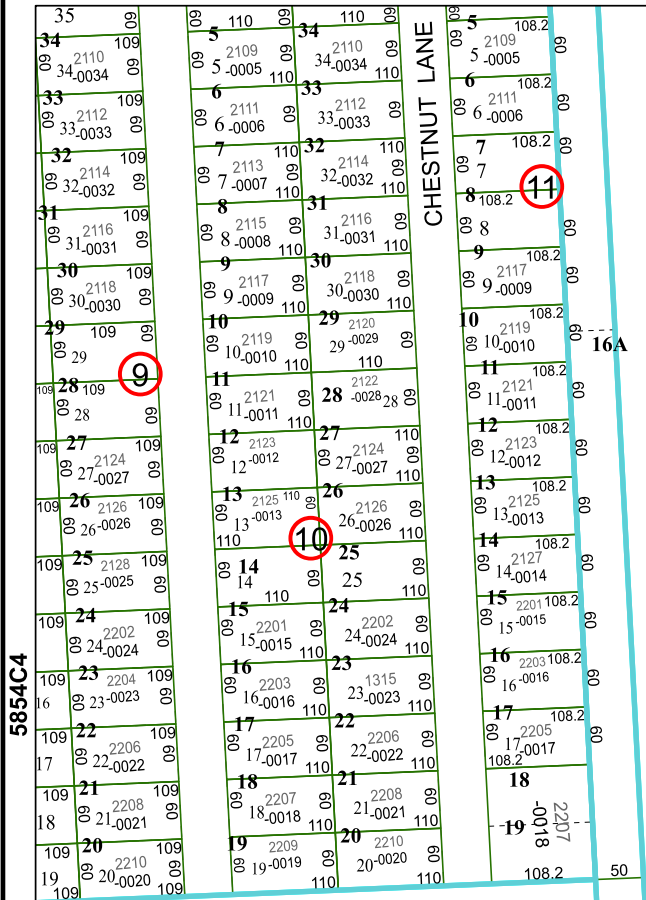
Geospatial or map data maintained by the Harris Central Appraisal District is for informational purposes and may not have been prepared for or be suitable for legal, engineering, or surveying purposes. It does not represent an on-the-ground survey and only represents the approximate location of property boundaries.

MAP LOCATION



FACET 5854D1

11	12	9	10	11
3	4	1	2	3
7	8	5	6	7



5854C4

1496.26

HUBBELL
1017-209

017-210-000-0010
35.7899 AC

2

673.03

309.8
929.4

278.39

868.98
722.85

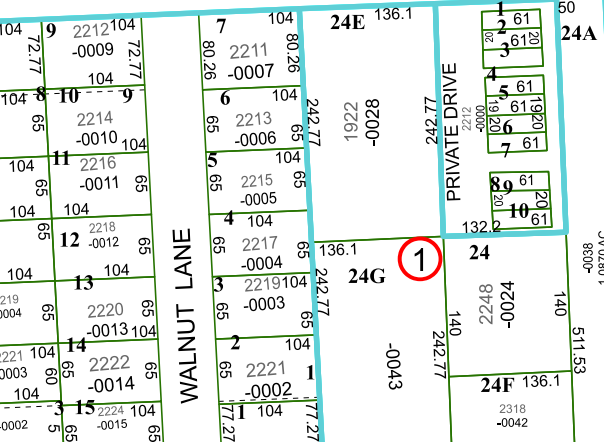
1751.31

5854D2

929.4
536.87

242.53

DALLAS STREET



5854D5

390/80'1
8800'-
544
514.53