

Harris Central Appraisal District

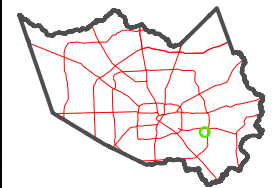


0 45 90 180 Feet

PUBLICATION DATE: 1/3/2023

Geospatial or map data maintained by the Harris Central Appraisal District is for informational purposes and may not have been prepared for or be suitable for legal, engineering, or surveying purposes. It does not represent an on-the-ground survey and only represents the approximate location of property boundaries.

MAP LOCATION

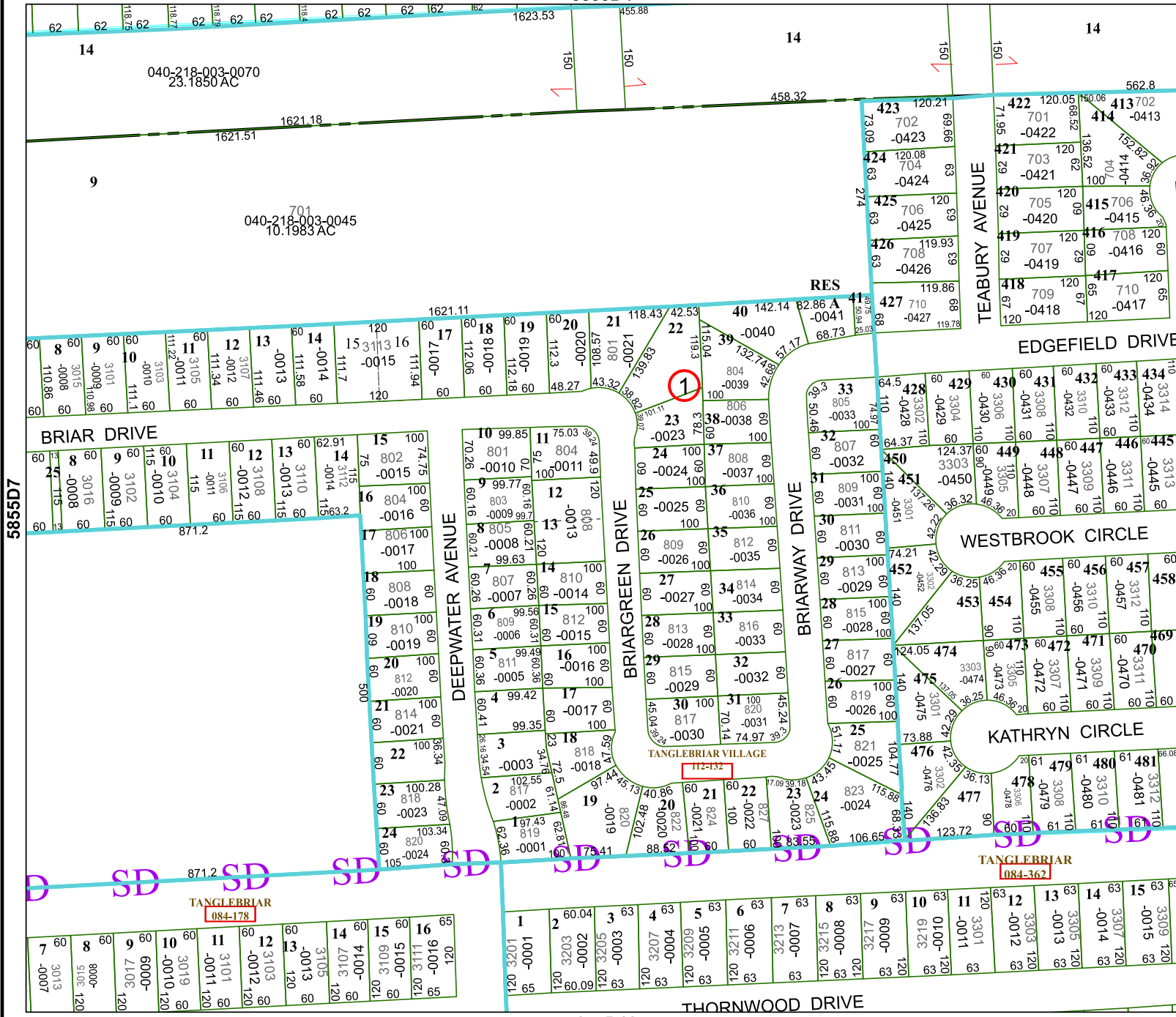


FACET 5855D8

2	3	4	5	6
6	7	8	9	10

5855D4

5855D12



5855D7

5855C5

TANGLEBRIAR 084-178

TANGLEBRIAR 084-367

040-218-003-0070
23.1850 AC

040-218-003-0045
10.1983 AC

1

112-132