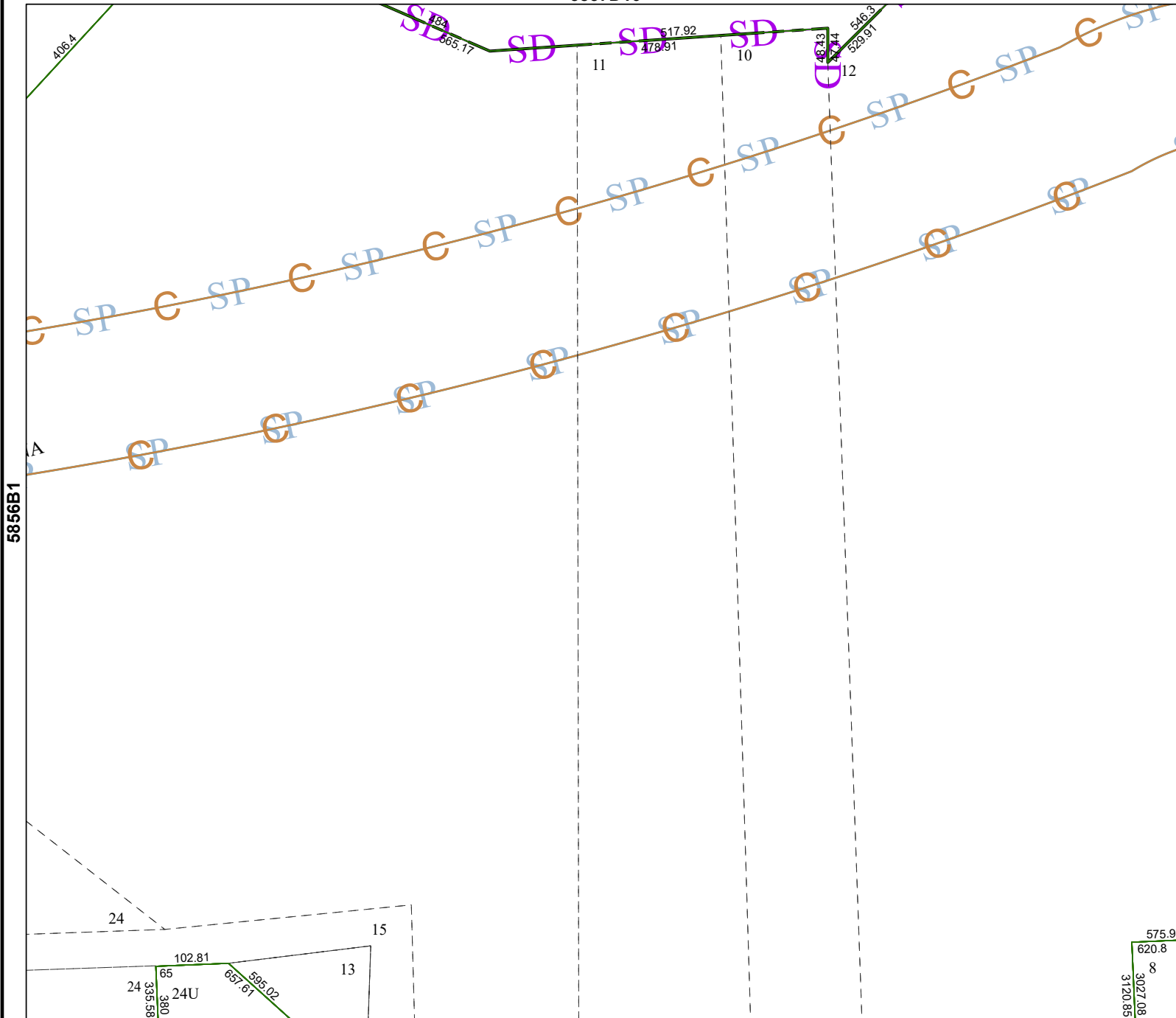
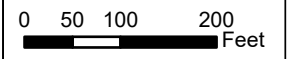


5857D10



5856B1

Harris Central Appraisal District

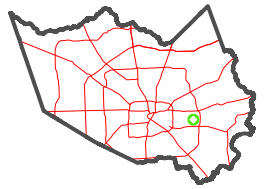


PUBLICATION DATE:
12/17/2025

Geospatial or map data maintained by the Harris Central Appraisal District is for informational purposes and may **not** have been prepared for or be suitable for legal, engineering, or surveying purposes. It does **not** represent an on-the-ground survey and only represents the approximate location of property boundaries.



MAP LOCATION



FACET 5856B2

12	9	10	11	12
4	1	2	3	4
8	5	6	7	8

5856B6

575.98
620.8
8
3027.08
3120.85