

5856B2

# Harris Central Appraisal District



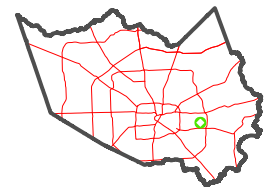
0 45 90 180  
Feet

PUBLICATION DATE:  
1/3/2023

Geospatial or map data maintained by the Harris Central Appraisal District is for informational purposes and may **not** have been prepared for or be suitable for legal, engineering, or surveying purposes. It does **not** represent an on-the-ground survey and only represents the approximate location of property boundaries.

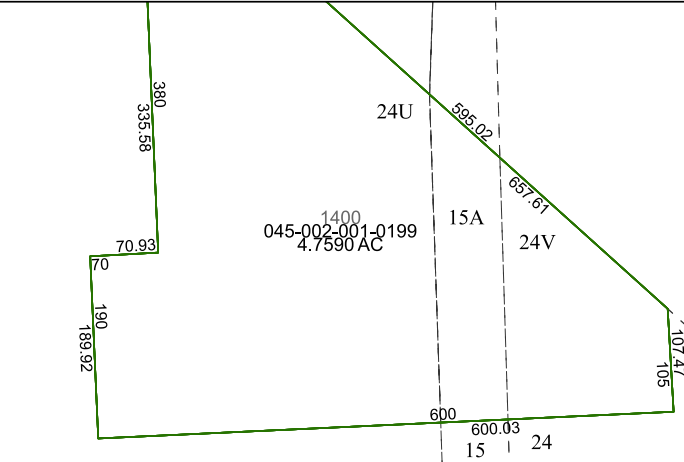


### MAP LOCATION



## FACET 5856B6

4	1	2	3	4
8	5	6	7	8
12	9	10	11	12



1400  
045-002-001-0178  
486.5860 AC

1400  
045-002-001-0199  
4.7590 AC

24U

15A

24V

600  
600.03  
15 24

5856B10

5856B5

5856B7  
3027.08  
3120.85