

5856D7

5855B3

5856D10

# Harris Central Appraisal District

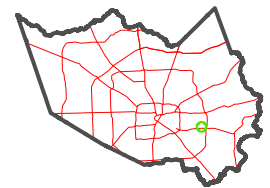


0 45 90 180 Feet

PUBLICATION DATE:  
1/3/2023

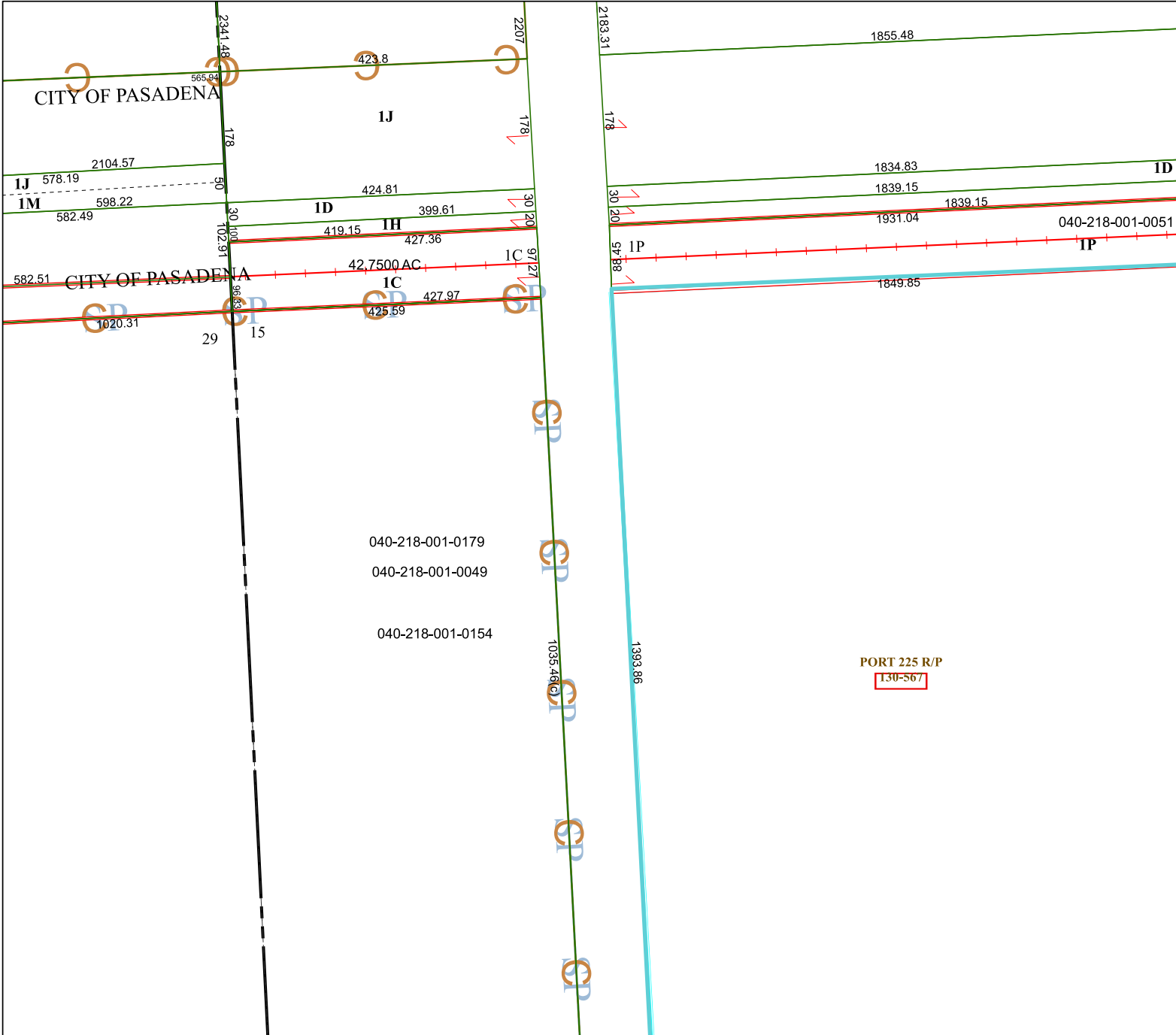
Geospatial or map data maintained by the Harris Central Appraisal District is for informational purposes and may not have been prepared for or be suitable for legal, engineering, or surveying purposes. It does not represent an on-the-ground survey and only represents the approximate location of property boundaries.

MAP LOCATION



## FACET 5856D11

5	6	7	8	5
9	10	11	12	9
1	2	3	4	1



- 040-218-001-0179
- 040-218-001-0049
- 040-218-001-0154

PORT 225 R/P  
130-567