

5856D5

Harris Central Appraisal District



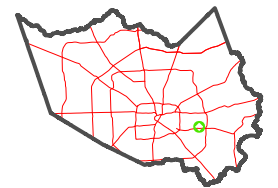
0 45 90 180 Feet

PUBLICATION DATE:
1/3/2023

Geospatial or map data maintained by the Harris Central Appraisal District is for informational purposes and may not have been prepared for or be suitable for legal, engineering, or surveying purposes. It does not represent an on-the-ground survey and only represents the approximate location of property boundaries.



MAP LOCATION



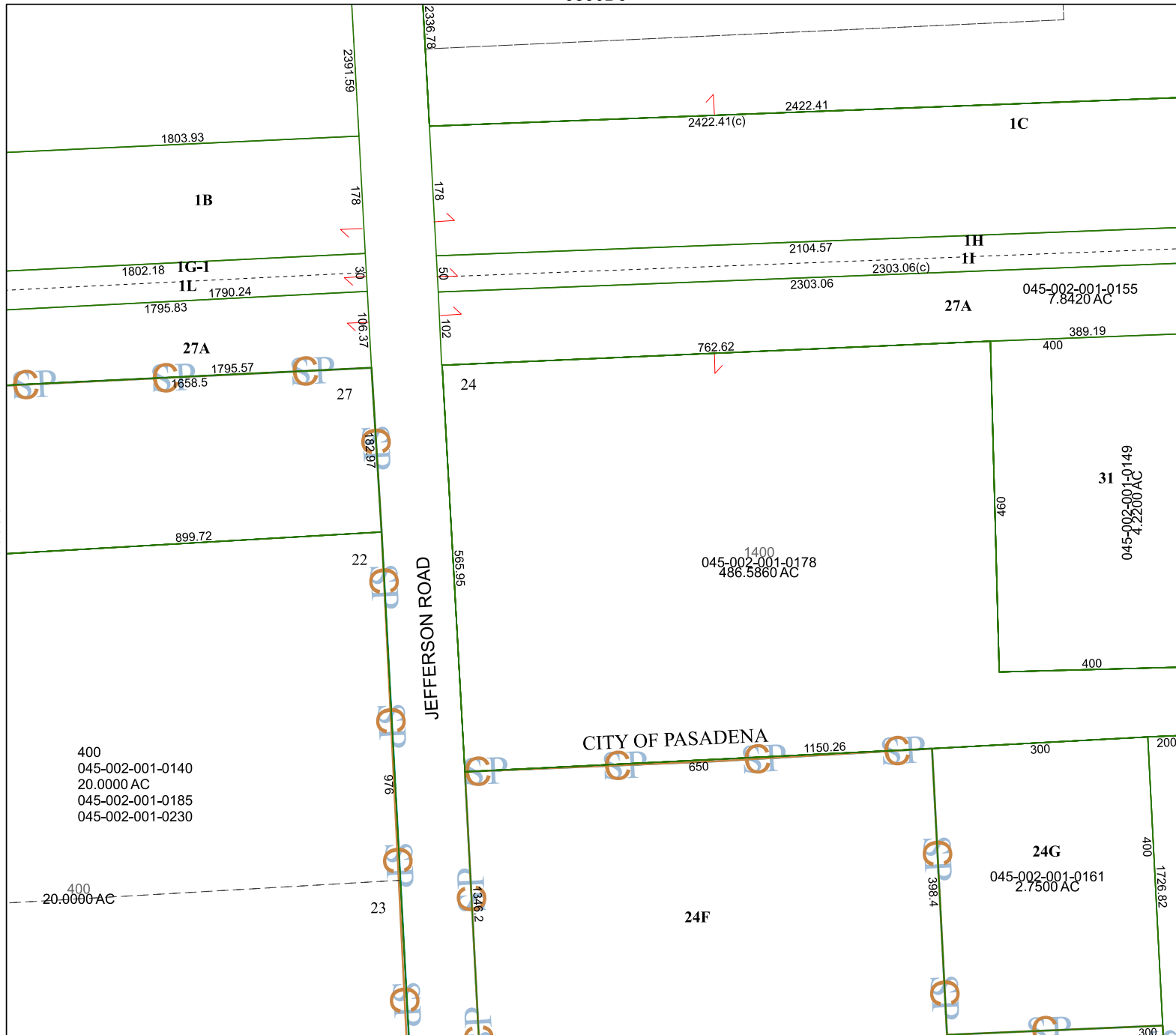
FACET 5856D9

7	8	5	6	7
11	12	9	10	11
3	4	1	2	3

5855B1

5856C12

5856D10



400
045-002-001-0140
20.0000 AC
045-002-001-0185
045-002-001-0230

24G
045-002-001-0161
2.7500 AC

1400
045-002-001-0178
486.5860 AC

31
045-002-001-0149
4.2200 AC

27A
045-002-001-0155
7.8420 AC