

5857A3

Harris Central Appraisal District



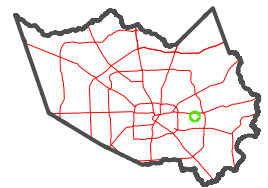
0 45 90 180 Feet

PUBLICATION DATE: 1/13/2025

Geospatial or map data maintained by the Harris Central Appraisal District is for informational purposes and may not have been prepared for or be suitable for legal, engineering, or surveying purposes. It does not represent an on-the-ground survey and only represents the approximate location of property boundaries.



MAP LOCATION



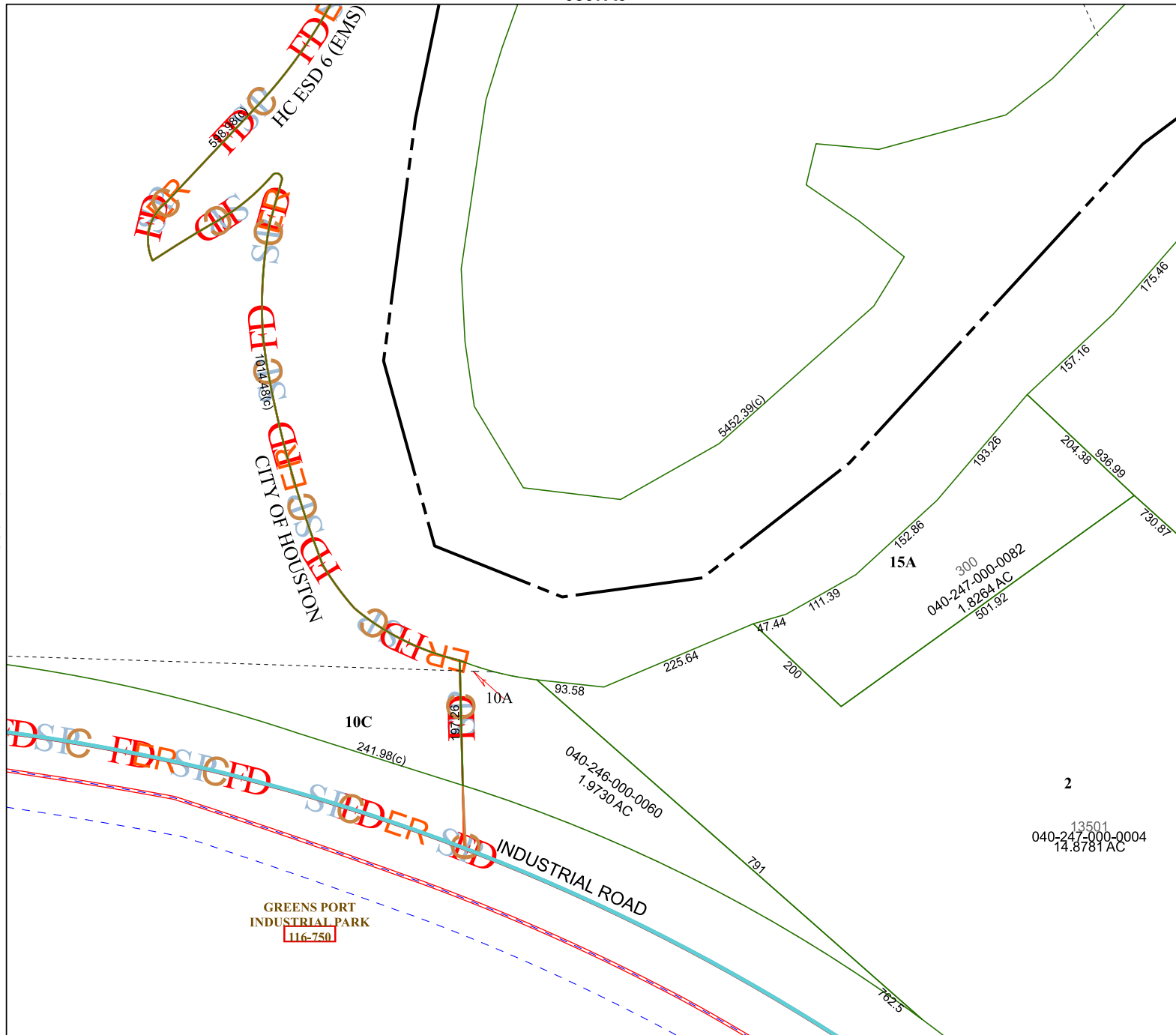
FACET 5857A7

1	2	3	4	1
5	6	7	8	5
9	10	11	12	9

5857A11

5857A6

5857A8



GREENS PORT INDUSTRIAL PARK 116-750

10C 241.98(c)

10A 197.26

15A

2

13501
040-247-000-0004
14.8781 AC

040-246-000-0060
1.9730 AC

300
040-247-000-0082
1.8264 AC
501.92

HC ESD 6 (EMS)
5857A3

CITY OF HOUSTON

INDUSTRIAL ROAD