

5857D5

Harris Central Appraisal District



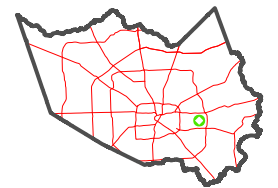
0 45 90 180
Feet

PUBLICATION DATE:
1/3/2023

Geospatial or map data maintained by the Harris Central Appraisal District is for informational purposes and may not have been prepared for or be suitable for legal, engineering, or surveying purposes. It does not represent an on-the-ground survey and only represents the approximate location of property boundaries.



MAP LOCATION



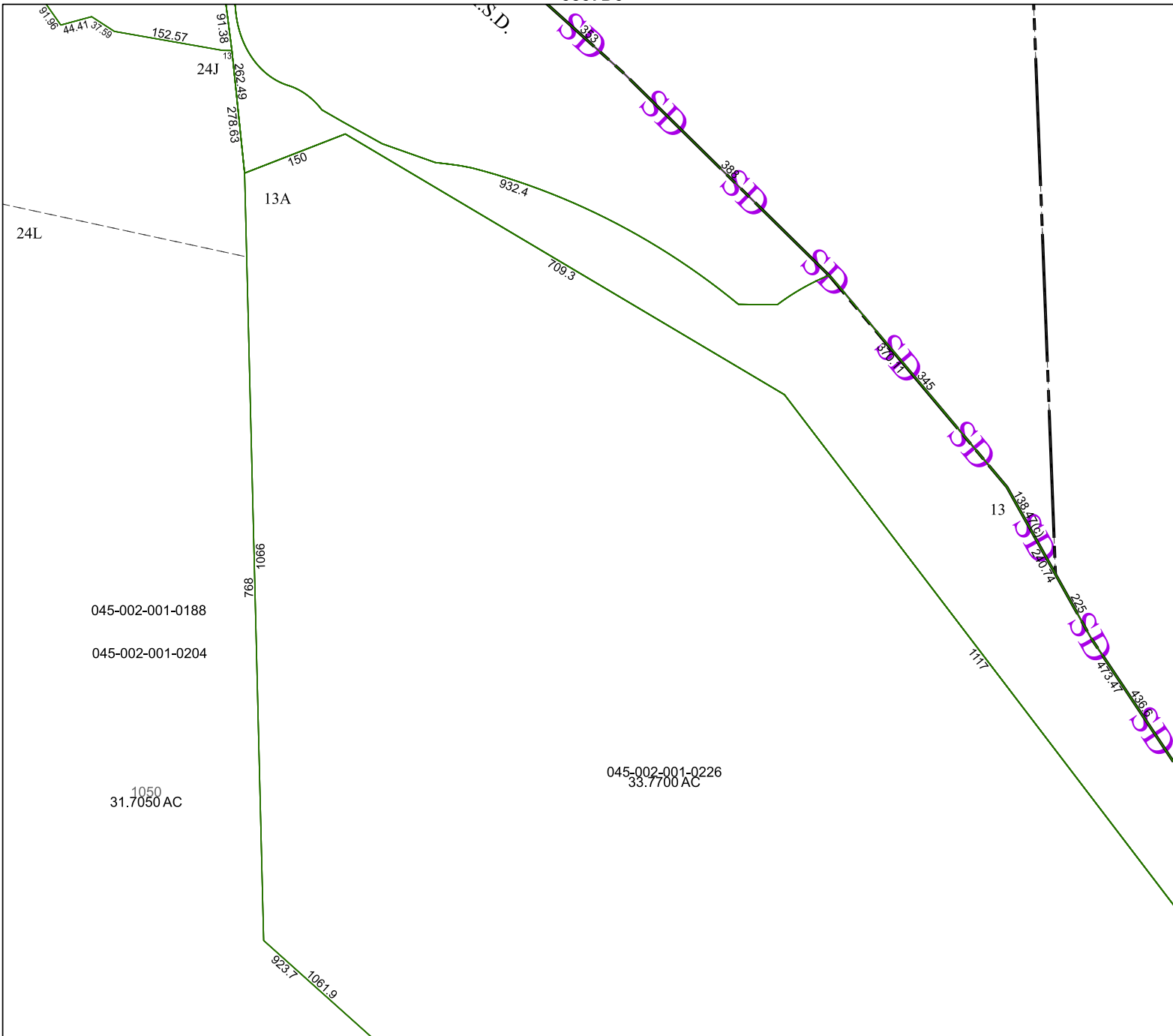
FACET 5857D9

7	8	5	6	7
11	12	9	10	11
3	4	1	2	3

5856B1

5857C12

5857D10



045-002-001-0188

045-002-001-0204

1050
31.7050 AC

045-002-001-0226
33.7700 AC

13A

24J

24L

13