

Harris Central Appraisal District

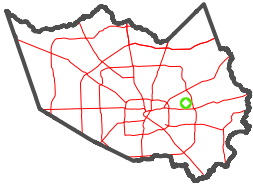


0 45 90 180 Feet

PUBLICATION DATE:
5/11/2023

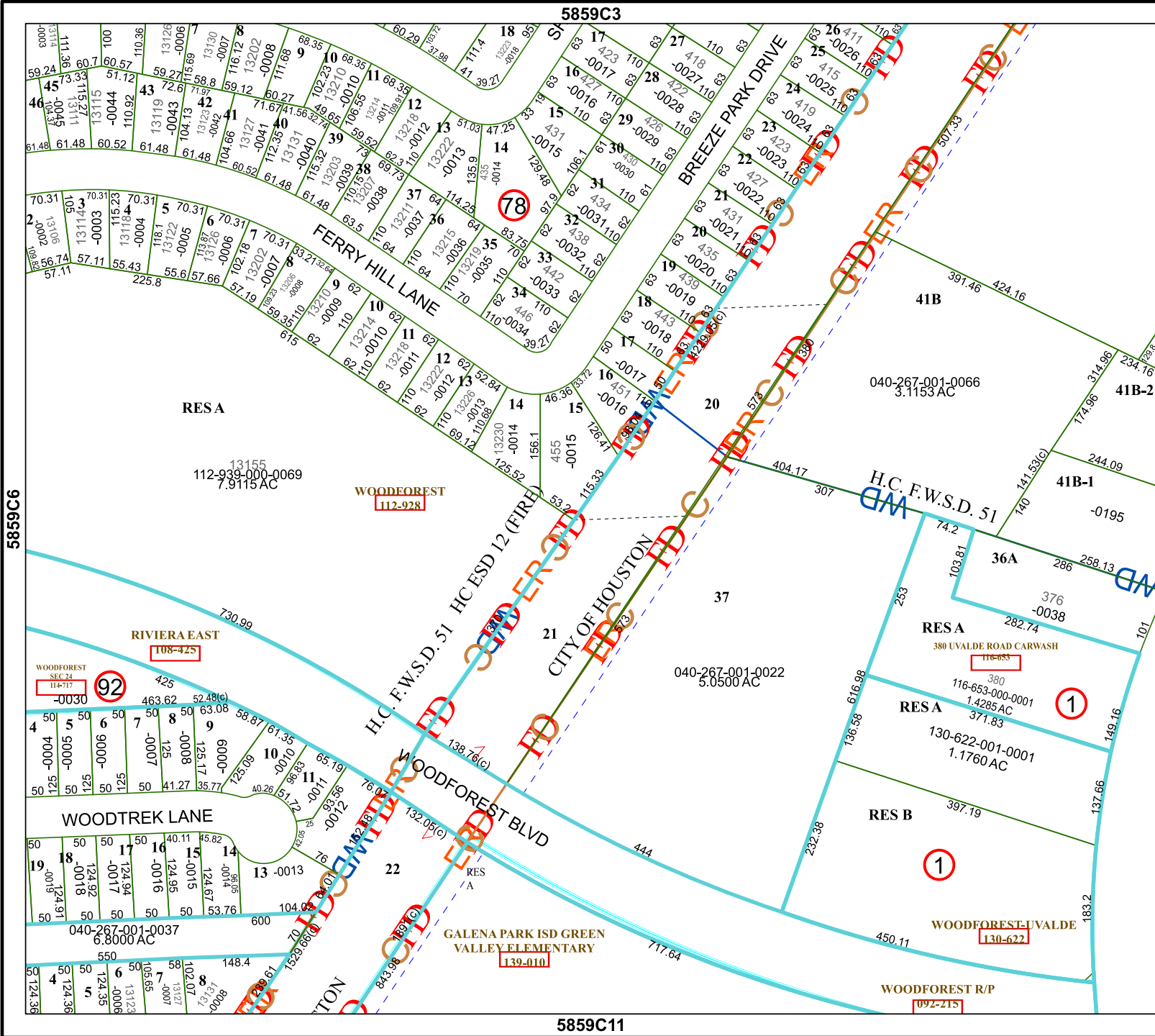
Geospatial or map data maintained by the Harris Central Appraisal District is for informational purposes and may not have been prepared for or be suitable for legal, engineering, or surveying purposes. It does not represent an on-the-ground survey and only represents the approximate location of property boundaries.

MAP LOCATION



FACET 5859C7

1	2	3	4	1
5	6	7	8	5
9	10	11	12	9



5859C3

5859C6

5859C8

5859C11