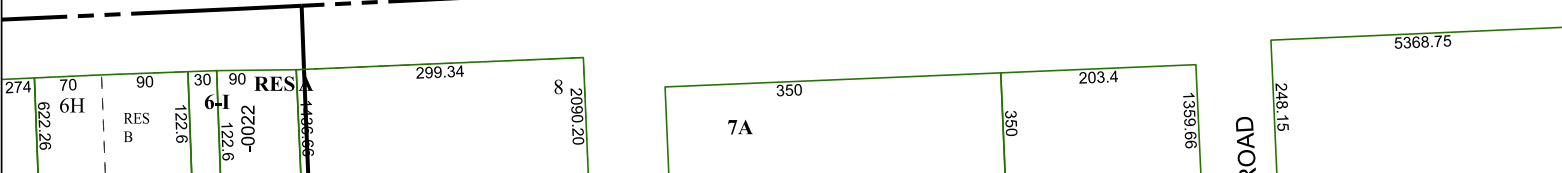
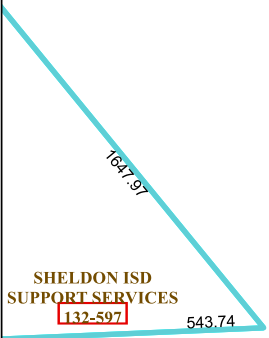


5863C6

5863C9



5862A2

Harris Central Appraisal District



0 45 90 180 Feet

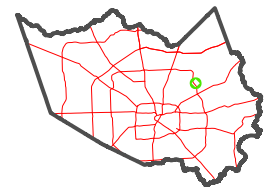
PUBLICATION DATE:
1/3/2023

Geospatial or map data maintained by the Harris Central Appraisal District is for informational purposes and may not have been prepared for or be suitable for legal, engineering, or surveying purposes. It does not represent an on-the-ground survey and only represents the approximate location of property boundaries.



5863C11

MAP LOCATION



FACET

5863C10

8	5	6	7	8
12	9	10	11	12
4	1	2	3	4