

5863A12

Harris Central Appraisal District



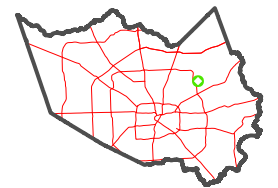
0 45 90 180 Feet

PUBLICATION DATE:
5/6/2024

Geospatial or map data maintained by the Harris Central Appraisal District is for informational purposes and may not have been prepared for or be suitable for legal, engineering, or surveying purposes. It does not represent an on-the-ground survey and only represents the approximate location of property boundaries.



MAP LOCATION

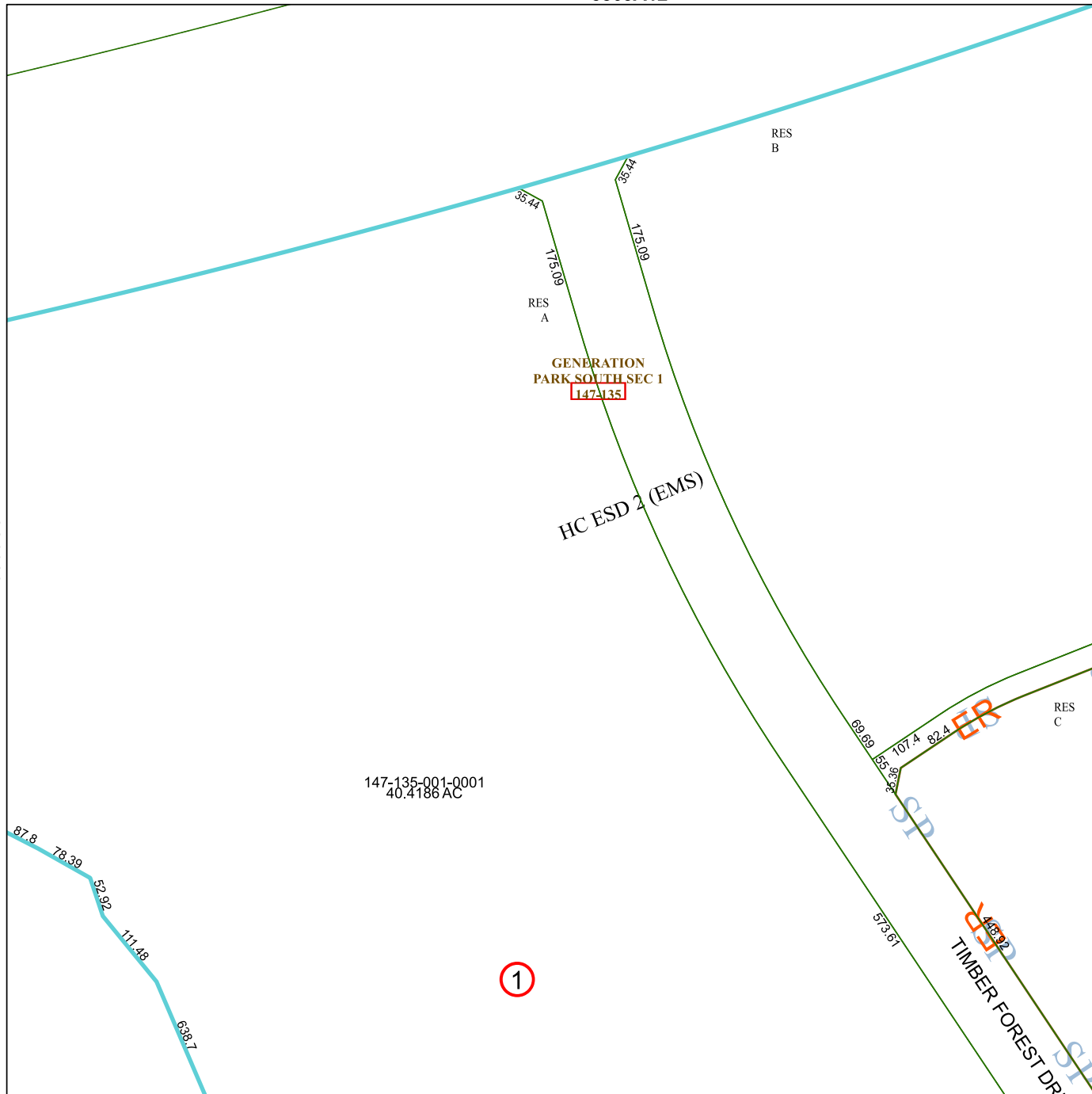


FACET 5863C4

10	11	12	9	10
2	3	4	1	2
6	7	8	5	6

5863C3

5863D1



147-135-001-0001
40.4186 AC

1

5863C8