

5865D11

39

39

Harris Central Appraisal District



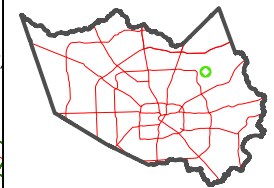
0 50 100 200 Feet

PUBLICATION DATE: 1/7/2026

Geospatial or map data maintained by the Harris Central Appraisal District is for informational purposes and may not have been prepared for or be suitable for legal, engineering, or surveying purposes. It does not represent an on-the-ground survey and only represents the approximate location of property boundaries.



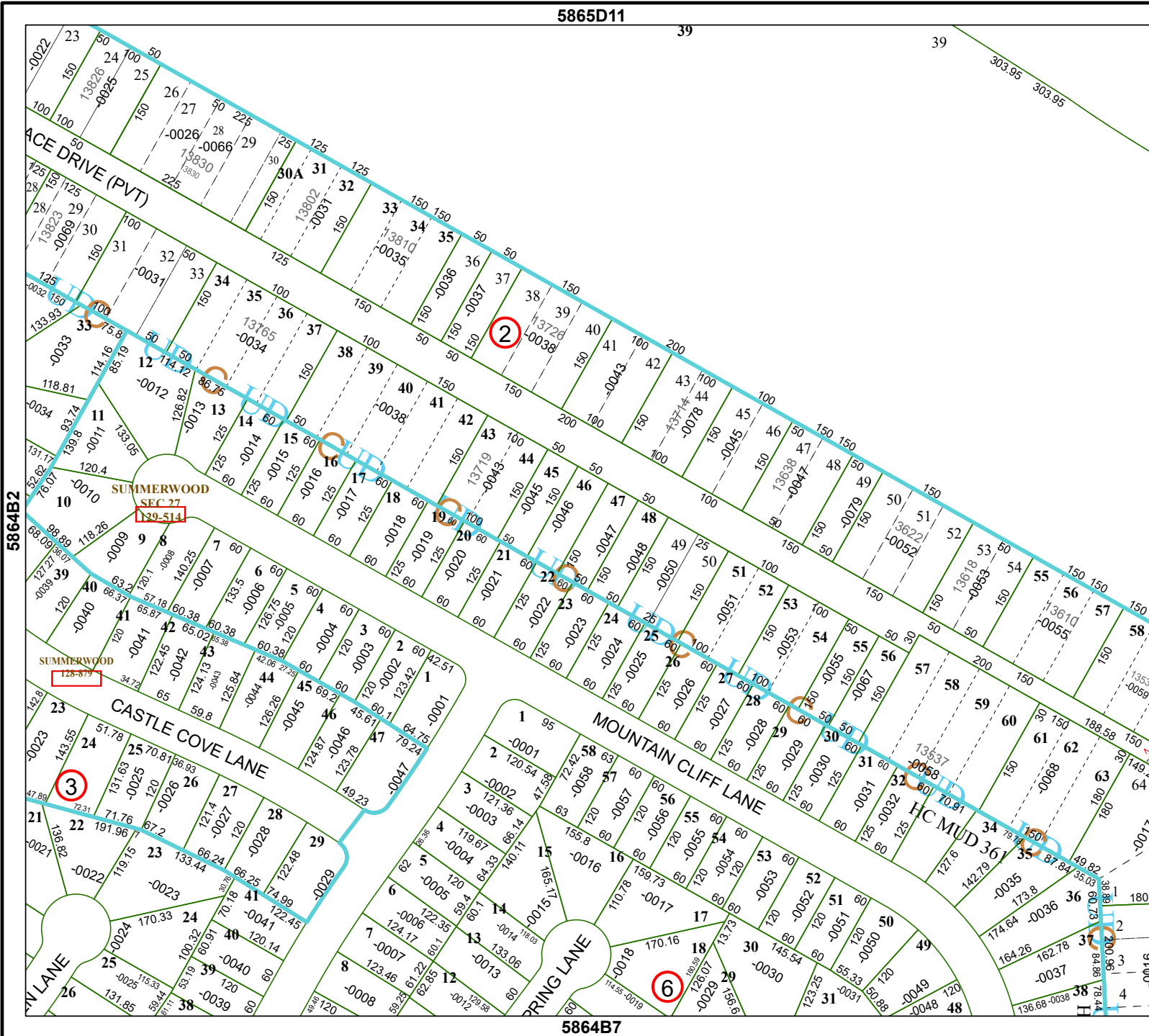
MAP LOCATION



FACET 5864B3

9	10	11	12	9
1	2	3	4	1
5	6	7	8	5

5864B7



5864B2

5864B4