

5864B12

10B-10

040-158-090-0411
26.1300 AC

5864D8

Harris Central Appraisal District

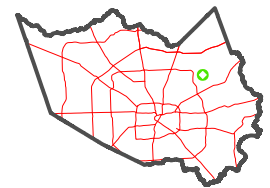


0 45 90 180 Feet

PUBLICATION DATE:
4/22/2024

Geospatial or map data maintained by the Harris Central Appraisal District is for informational purposes and may not have been prepared for or be suitable for legal, engineering, or surveying purposes. It does not represent an on-the-ground survey and only represents the approximate location of property boundaries.

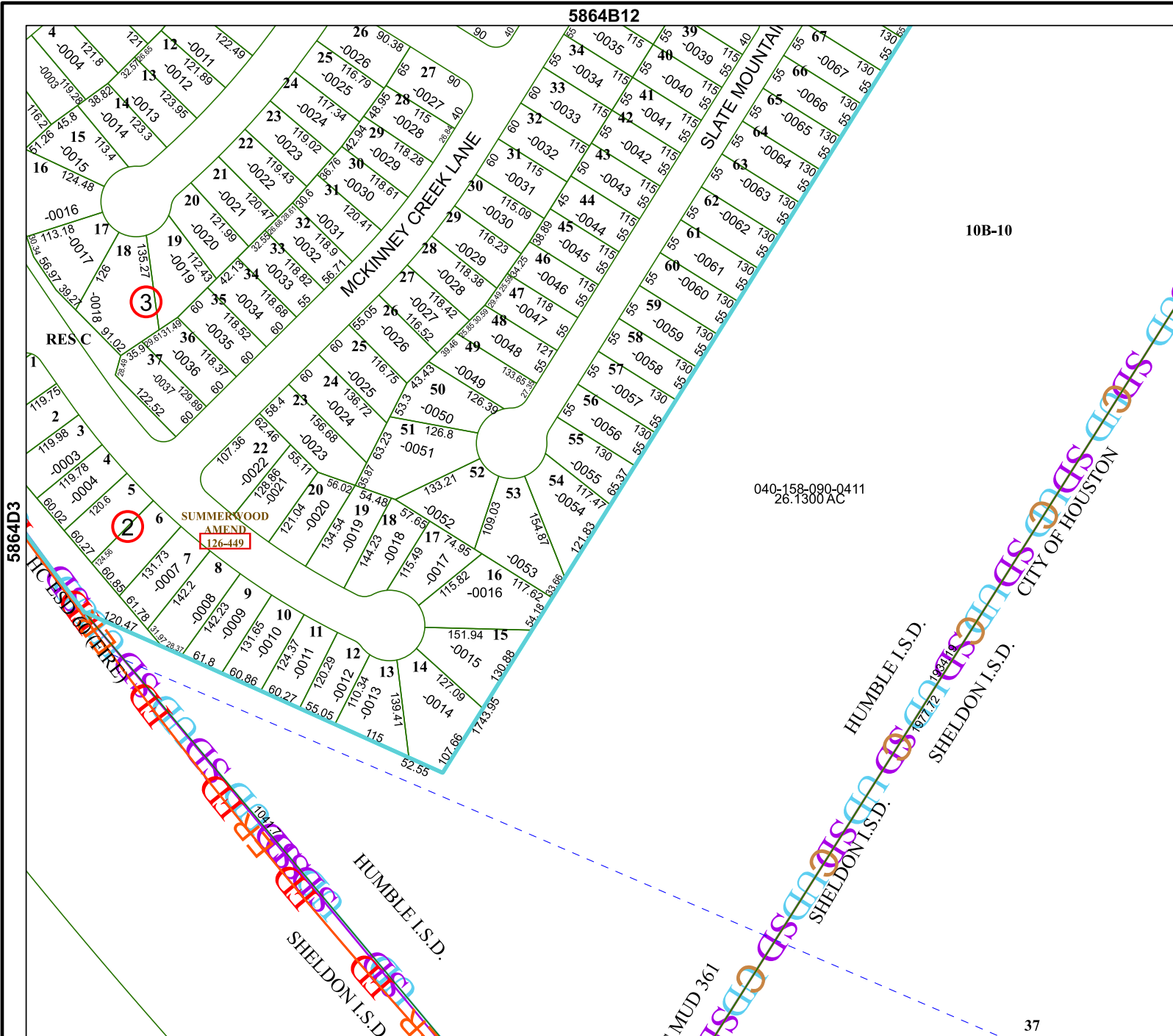
MAP LOCATION



FACET

5864D4

10	11	12	9	10
2	3	4	1	2
6	7	8	5	6



5864D3

5964C1

CITY OF HOUSTON

HUMBLE I.S.D.

SHELDON I.S.D.

HUMBLE I.S.D.
SHELDON I.S.D.

MUD 361