

Harris Central Appraisal District

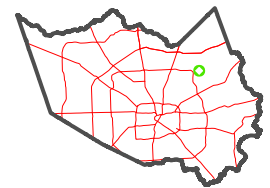


0 45 90 180 Feet

PUBLICATION DATE:
1/3/2023

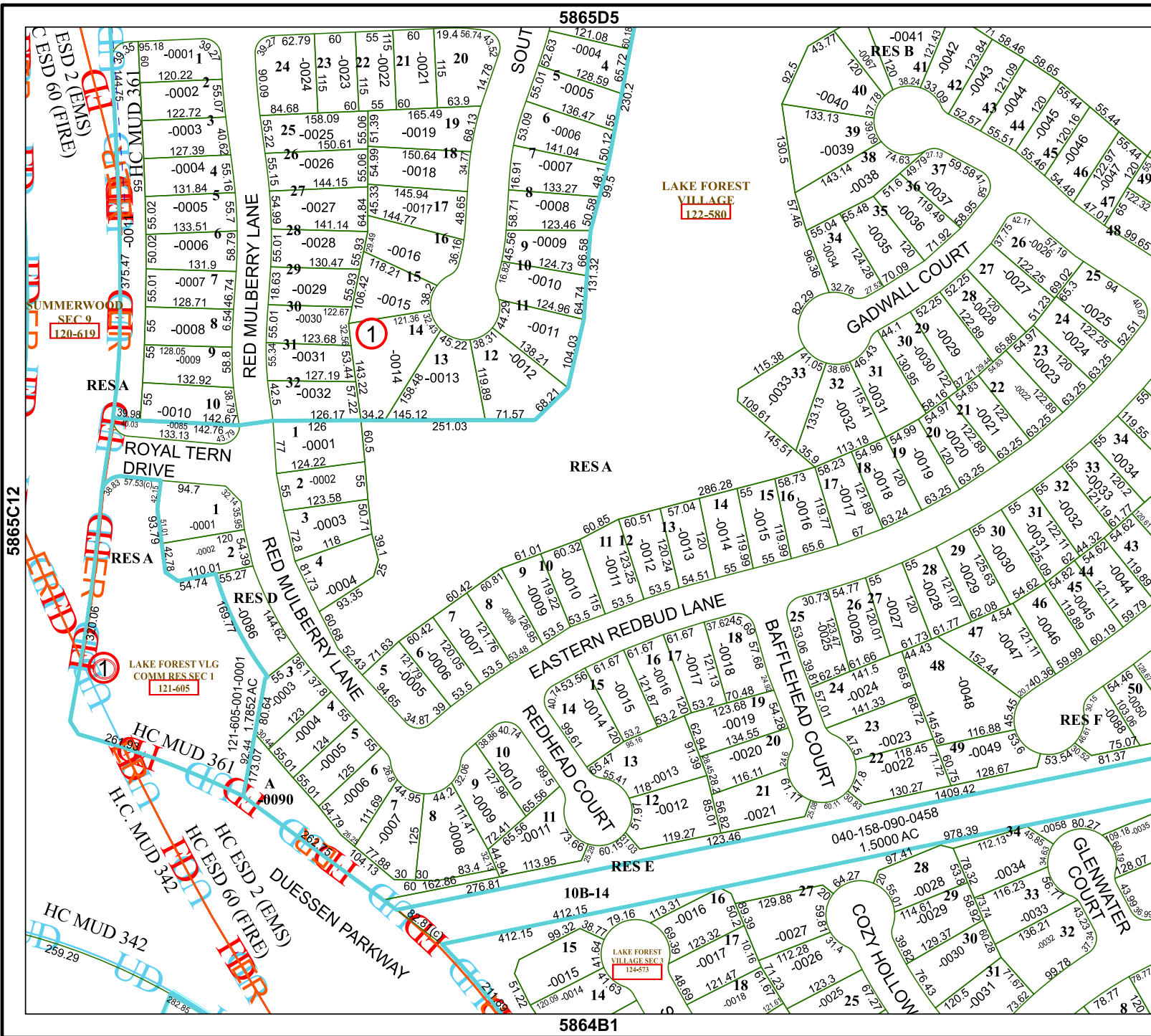
Geospatial or map data maintained by the Harris Central Appraisal District is for informational purposes and may not have been prepared for or be suitable for legal, engineering, or surveying purposes. It does not represent an on-the-ground survey and only represents the approximate location of property boundaries.

MAP LOCATION



FACET 5865D9

7	8	5	6	7
11	12	9	10	11
3	4	1	2	3



5865D5

LAKE FOREST VILLAGE
122-580

5864B1

5865D10

5865C12

LAKE FOREST VILLAGE SEC 3
124-573

ESD 2 (EMS)
ESD 60 (FIRE)

HC MUD 361

SUMMERWOOD SEC 9
120-619

RESA

ROYAL TERN DRIVE

RESA

LAKE FOREST VLG COMM RES SEC 1
121-605

HC MUD 361

H.C. MUD 342

HC ESD 2 (EMS)

HC ESD 60 (FIRE)

HC MUD 342

DUESSEN PARKWAY

10B-14

LAKE FOREST VILLAGE SEC 3
124-573

040-158-090-0458
1.5000 AC

COZY HOLLOW

GLENWATER COURT