

Harris Central Appraisal District

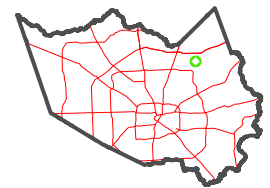


0 45 90 180 Feet

PUBLICATION DATE: 1/3/2023

Geospatial or map data maintained by the Harris Central Appraisal District is for informational purposes and may not have been prepared for or be suitable for legal, engineering, or surveying purposes. It does not represent an on-the-ground survey and only represents the approximate location of property boundaries.

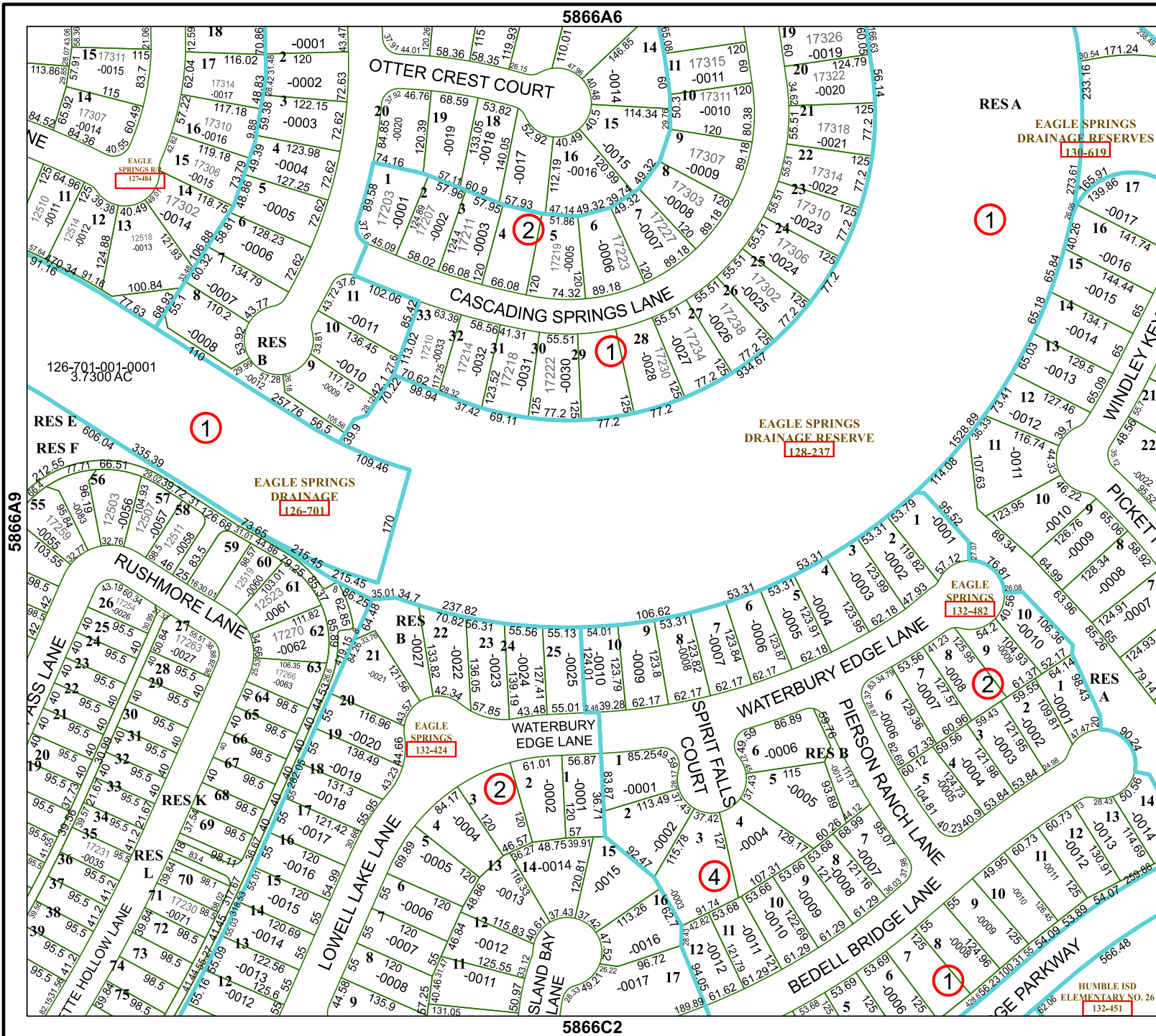
MAP LOCATION



FACET 5866A10

8	5	6	8
12	9	10	12
4	1	2	4

HUMBLE ISD ELEMENTARY NO. 26 132-451



5866A6

RES A

EAGLE SPRINGS DRAINAGE RESERVES 131-619

EAGLE SPRINGS DRAINAGE 126-701

EAGLE SPRINGS DRAINAGE RESERVE 128-237

EAGLE SPRINGS 132-482

EAGLE SPRINGS 132-424

5866C2