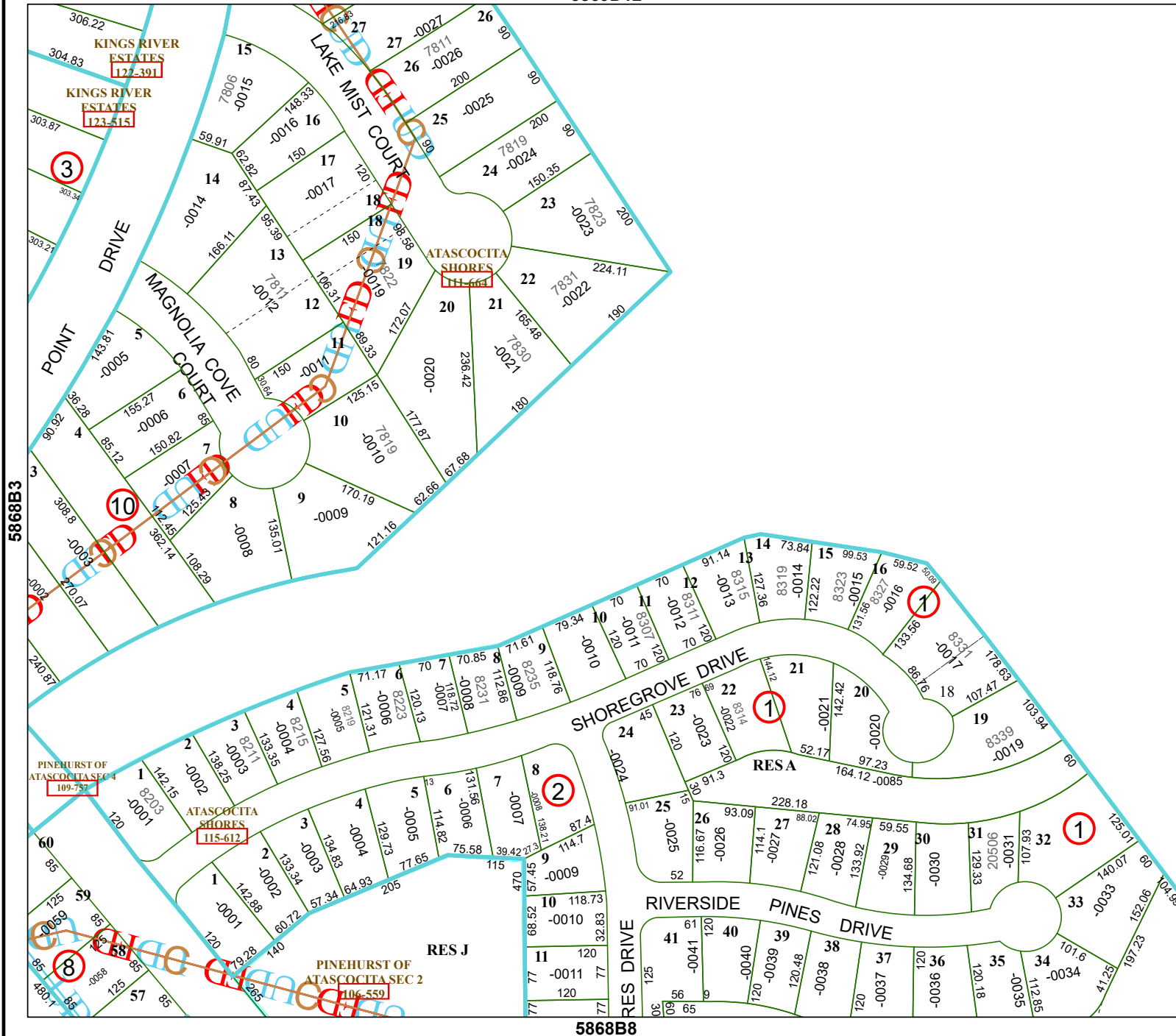


5869D12



5868B8

# Harris Central Appraisal District



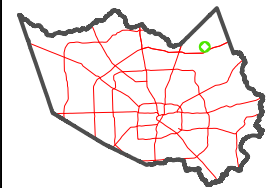
0 45 90 180  
Feet

PUBLICATION DATE:  
4/15/2025

Geospatial or map data maintained by the Harris Central Appraisal District is for informational purposes and may not have been prepared for or be suitable for legal, engineering, or surveying purposes. It does not represent an on-the-ground survey and only represents the approximate location of property boundaries.



MAP LOCATION



## FACET 5868B4

10	11	12	9	10
2	3	4	1	2
6	7	8	5	6