

5869B12

# Harris Central Appraisal District



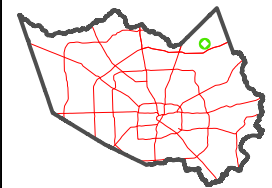
0 45 90 180  
Feet

PUBLICATION DATE:  
5/22/2023

Geospatial or map data maintained by the Harris Central Appraisal District is for informational purposes and may not have been prepared for or be suitable for legal, engineering, or surveying purposes. It does not represent an on-the-ground survey and only represents the approximate location of property boundaries.



### MAP LOCATION

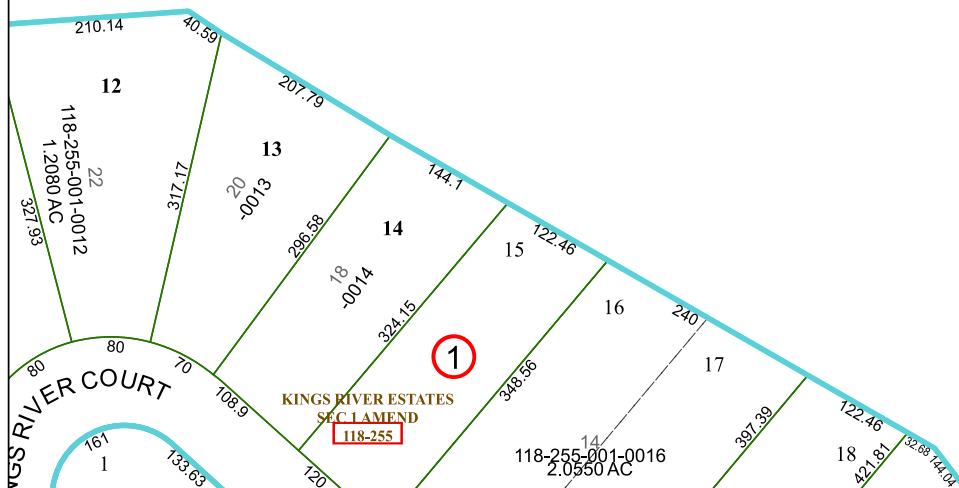


## FACET 5869D4

10	11	12	9	10
2	3	4	1	2
6	7	8	5	6

5869D3

5969C1



5869D8